

## LOS ALTOS

### GANNETT | PLAN 2097

APPROX. 2,097 SQ. FT. | 2-STORY | 3 BEDROOMS | 2.5 BATHROOMS | LOFT AREA | 2-BAY GARAGE  
KITCHEN ISLAND, CORNER PANTRY, WALK-IN SHOWER AT PRIMARY BATH, OPT. COVERED PATIO AND MORE



**ELEVATION A**



**ELEVATION B**



**ELEVATION C**

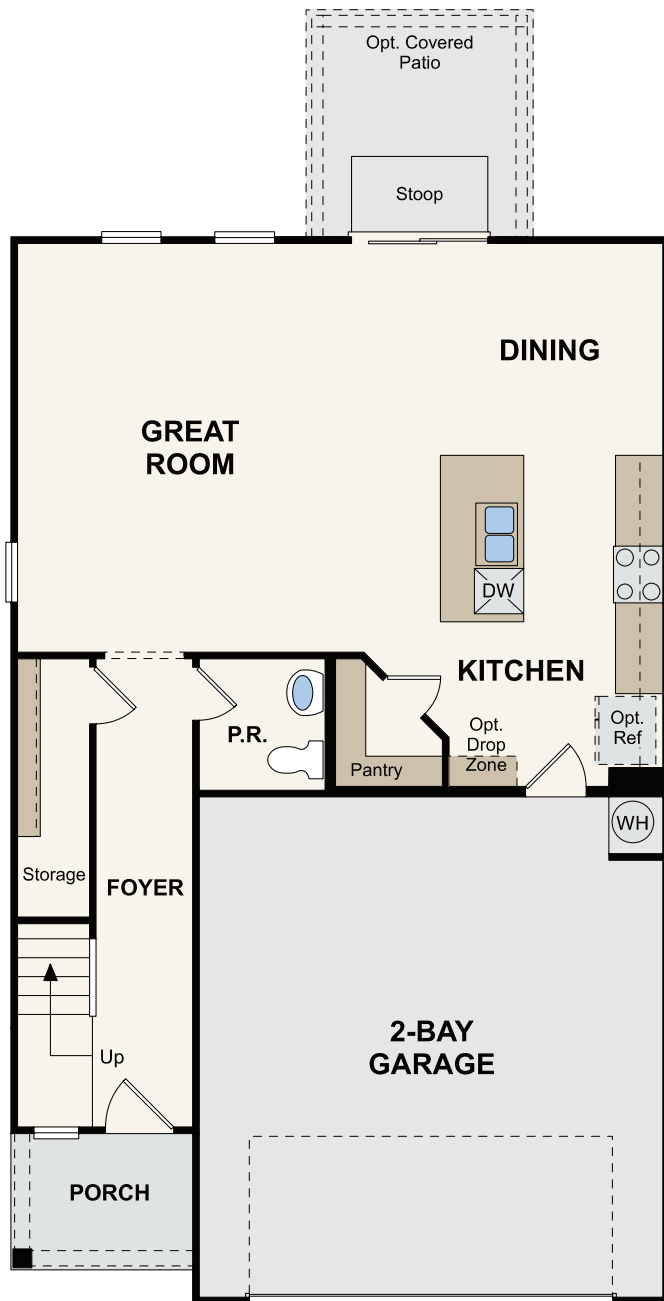


Prices, plans, and terms are effective on the date of publication and subject to change without notice. Square footage/acreage shown is only an estimate and actual square footage/acreage will differ. Buyer should rely on his or her own evaluation of usable area. Depictions of homes or other features are artist conceptions. Hardscape, landscape, and other items shown may be decorator suggestions that are not included in the purchase price and availability may vary. ©2022 Century Communities, Inc. Rev. 08/19/2022

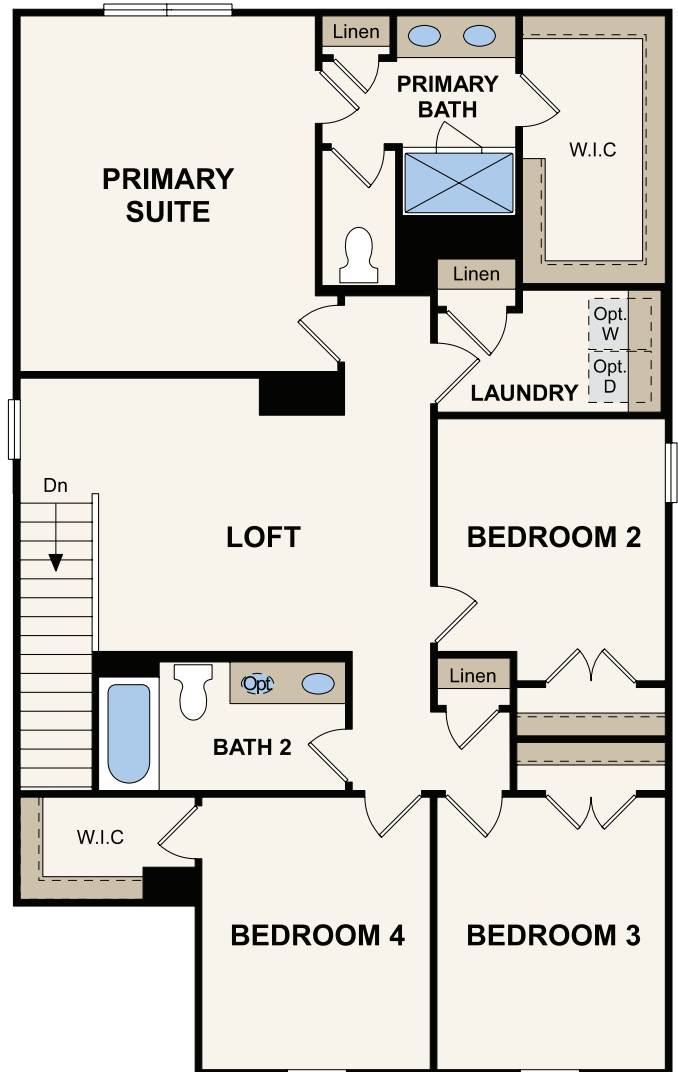
## GANNETT | PLAN 2097

APPROX. 2,097 SQ. FT. | 2-STORY | 3 BEDROOMS | 2.5 BATHROOMS | LOFT AREA | 2-BAY GARAGE

KITCHEN ISLAND, CORNER PANTRY, WALK-IN SHOWER AT PRIMARY BATH, OPT. COVERED PATIO AND MORE



**FIRST FLOOR**



**SECOND FLOOR**



Prices, plans, and terms are effective on the date of publication and subject to change without notice. Square footage/acreage shown is only an estimate and actual square footage/acreage will differ. Buyer should rely on his or her own evaluation of usable area. Depictions of homes or other features are artist conceptions. Hardscape, landscape, and other items shown may be decorator suggestions that are not included in the purchase price and availability may vary. ©2022 Century Communities, Inc. Rev. 08/19/2022