

## CREEKSIDE AT **LOS ALTOS**

### TYLER | PLAN 1557

APPROX. 1,557 SQ. FT. | 1-STORY | 3 BEDROOMS | 2 BATHROOMS | 2-BAY GARAGE  
KITCHEN PENINSULA, WALK-IN SHOWER AT PRIMARY BATH, OPT. COVERED PATIO AND  
MORE



**ELEVATION A**



**ELEVATION B**



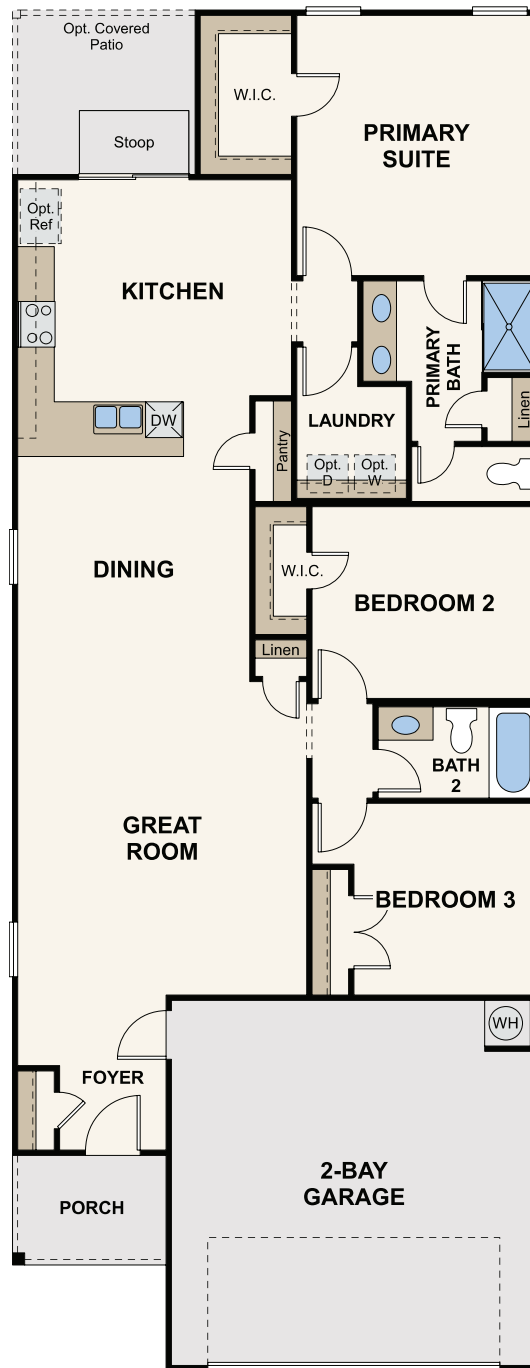
**ELEVATION E**



Prices, plans, and terms are effective on the date of publication and subject to change without notice. Square footage/acreage shown is only an estimate and actual square footage/acreage will differ. Buyer should rely on his or her own evaluation of usable area. Depictions of homes or other features are artist conceptions. Hardscape, landscape, and other items shown may be decorator suggestions that are not included in the purchase price and availability may vary. ©2022 Century Communities, Inc. Rev. 08/24/2022

## TYLER | PLAN 1557

APPROX. 1,557 SQ. FT. | 1-STORY | 3 BEDROOMS | 2 BATHROOMS | 2-BAY GARAGE  
KITCHEN PENINSULA, WALK-IN SHOWER AT PRIMARY BATH, OPT. COVERED PATIO AND  
MORE



Prices, plans, and terms are effective on the date of publication and subject to change without notice. Square footage/acreage shown is only an estimate and actual square footage/acreage will differ. Buyer should rely on his or her own evaluation of usable area. Depictions of homes or other features are artist conceptions. Hardscape, landscape, and other items shown may be decorator suggestions that are not included in the purchase price and availability may vary. ©2022 Century Communities, Inc. Rev. 08/24/2022