

EL CIDRO

RESIDENCE 6

APPROX. 1,971 SQ. FT. | 1-STORY | 3 BEDROOMS | 2 BATHROOMS | 2-BAY GARAGE



ELEVATION A



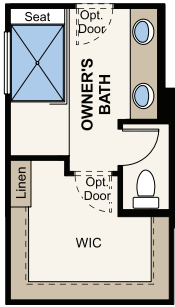
ELEVATION B



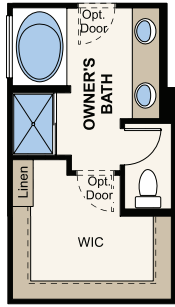
ELEVATION C



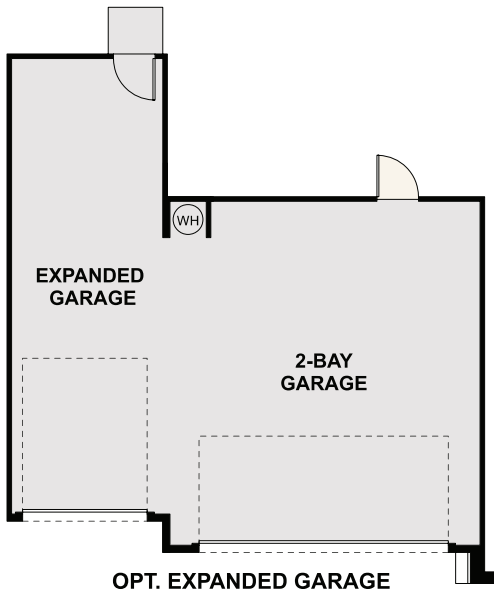
Prices, plans, and terms are effective on the date of publication and subject to change without notice. Square footage/acreage shown is only an estimate and actual square footage/acreage will differ. Buyer should rely on his or her own evaluation of usable area. Depictions of homes or other features are artist conceptions. Hardscape, landscape, and other items shown may be decorator suggestions that are not included in the purchase price and availability may vary. ©2023 Century Communities, Inc. Rev. 02/07/2023



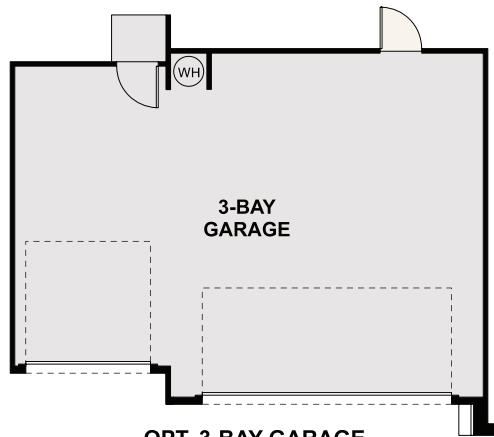
OPT. OWNER'S BATH WALK-IN SHOWER



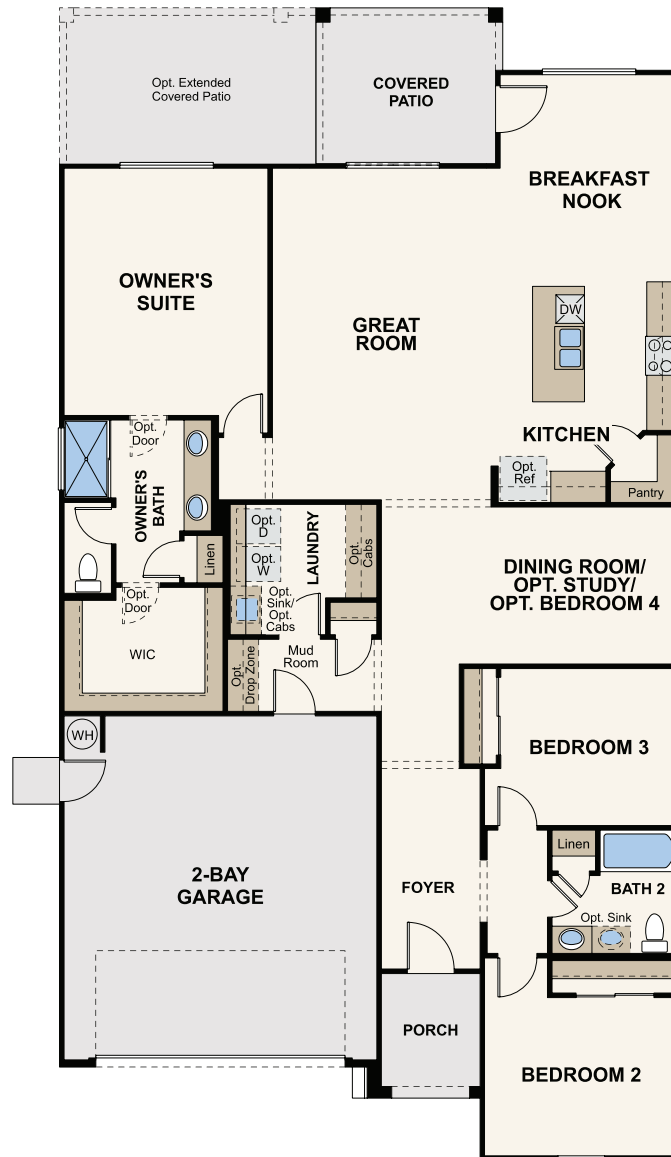
OPT. OWNER'S BATH TUB & SHOWER



OPT. EXPANDED GARAGE



OPT. 3-BAY GARAGE



OPT. STUDY



OPT. BEDROOM 4

FLOOR PLAN



Prices, plans, and terms are effective on the date of publication and subject to change without notice. Square footage/acreage shown is only an estimate and actual square footage/acreage will differ. Buyer should rely on his or her own evaluation of usable area. Depictions of homes or other features are artist conceptions. Hardscape, landscape, and other items shown may be decorator suggestions that are not included in the purchase price and availability may vary. ©2023 Century Communities, Inc. Rev. 02/07/2023