

# 400 LITTLETON VILLAGE

## INCLUDED FEATURES

### LONG LASTING EXTERIORS

- Long lasting 30 year shingle roofing
- Sustainable weather resistant fiber-cement siding with durable latex paint finish
- Brick/stucco accents per building
- 5" primed and painted galvanized steel gutters and down-spouts
- Street-level store front entry

### IMPRESSIVE INTERIORS

- Central elevator for convenience and accessibility
- Faux wood 2" horizontal window blinds
- 6'8" 5-panel interior doors with lever-style chrome hardware
- Beautiful birch cabinetry throughout home
- Walls and ceiling texture in orange peel finish
- Sherwin Williams® paint
  - Walls and ceilings in satin finish
  - Baseboards and trim in semi-gloss finish

- Wood grain laminate flooring in entry, kitchen, laundry and living
- In-unit laundry
- Euro shower doors in primary bath
- Secondary baths with 60 x 30" tub-shower, 6 x 6 ceramic tile surround, and single handle chrome faucet
- Water-saver toilets in white finish
- One dual port in the great room and one in the owner's bedroom
- One phone jack in owner's bedroom

### CONTEMPORARY KITCHENS

- Quartz countertop with tile backsplash
- Birch cabinetry with 42" uppers
- Whirlpool® appliances:
  - Free-standing electric range, 30" ceramic glass cooktop and self-cleaning oven
  - Microwave/hood combo, 1.7 cubic foot capacity - with 2-speed venting and light
  - Large capacity, Energy Star dishwasher with 4 automatic cycles

- Stainless steel undermount sink
- Single handle faucet - separate sprayer, chrome finish
- 1/3 horsepower disposal
- Ice maker line to refrigerator

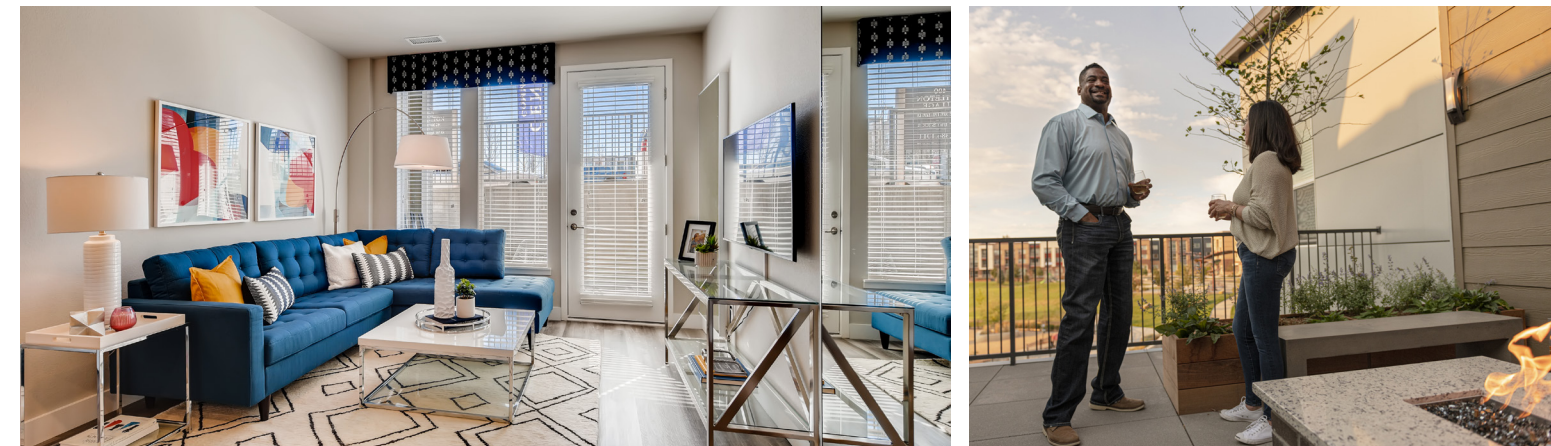
### WHOLE-HOUSE ENERGY SAVINGS

- Central heating & air conditioning: 92% efficient gas furnace with programmable thermostat to maintain year round comfort and reduce utility bills
- 40 gallon electric water heater for efficiency and lower energy cost
- Insulation and weather stripping
- White vinyl dual-pane windows with sills, grids, included screens, Low-E glass to help retain warmth in winter and cool air in summer



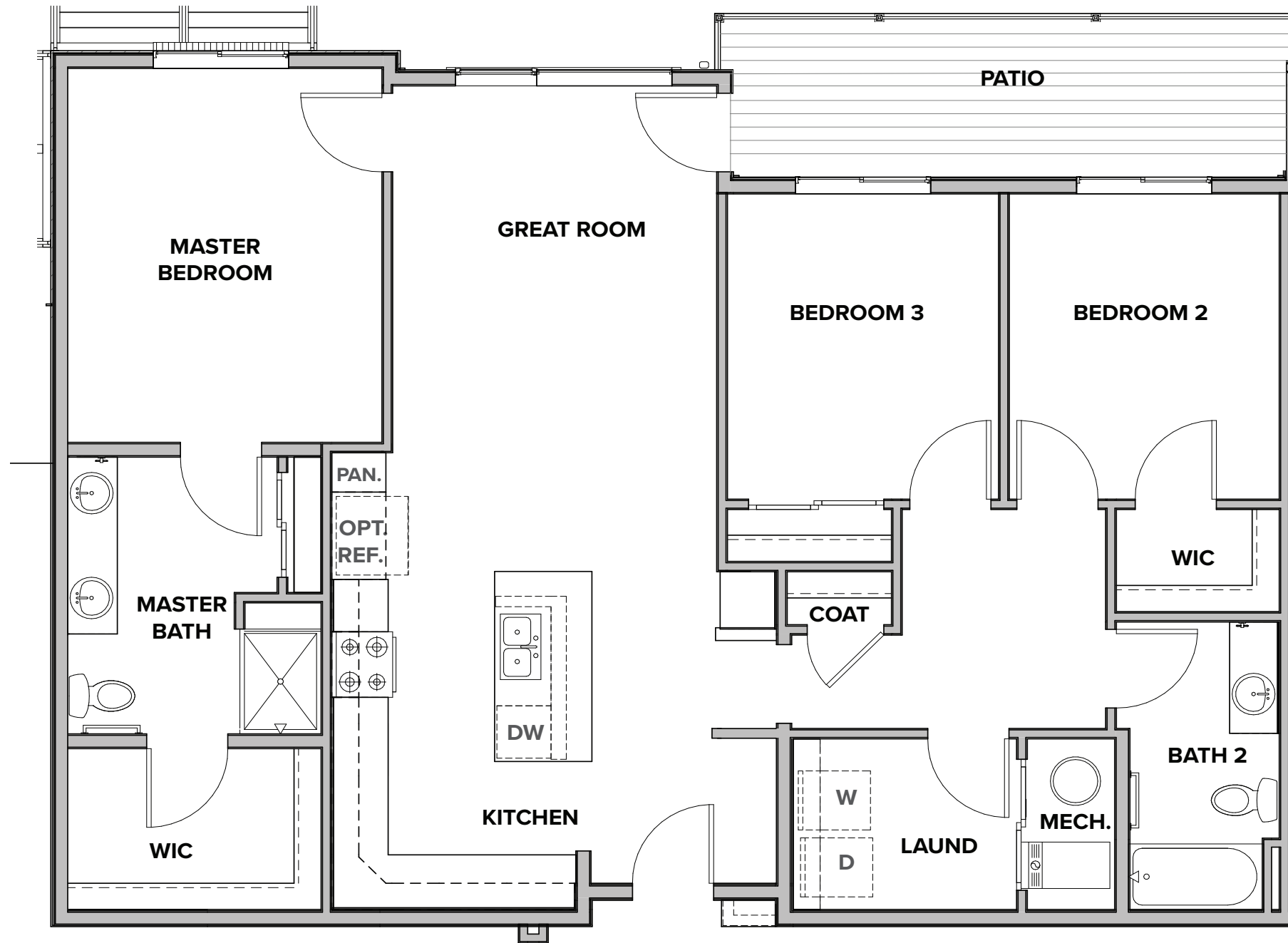
## 400 LITTLETON VILLAGE

## RESIDENCE 3C



# 400 LITTLETON VILLAGE

**RESIDENCE 3C**  
APPROX. 1,384 SQ. FT. | CONDO  
3 BEDROOMS | 2 BATHROOMS



## 3C (TYPE A)

PRELIMINARY



Seller reserves the right to make changes or modifications to plans, amenities, maps, plan specifications, materials, features, and colors without notice. Maps, plans, landscaping and elevation renderings are artist's conceptions, are not to scale, and may not accurately depict the homes or lots as they are built. These illustrations may depict options and features that are not standard on all models. Optional features may be included in the purchase, and if included, will vary according to size and location of the lot. Exterior treatments, square footages, window locations, and room configurations may vary with elevation. Model home interior decorating, options, landscaping, fencing, and other amenities are for display purposes only. All marketing material is for illustrative purposes only and not a part of a legal contract. Square footages are approximate. All prices, plans, standard features, specifications, options, availability and estimated delivery dates are subject to change without prior notice. Additional restrictions may apply. See a New Home Counsellor for further details. Depictions of homes or other features are conceptual. Decorative items and other items shown may be decorator suggestions that are not included in the purchase price and availability may vary. Persons in photos do not reflect racial preference and housing is open to all without regard to race, color, religion, sex, handicap, familial status, or national origin. ©01/2021 Century Communities.