

MARKET PLACE

WILLOW

2,753 SQ. FT. | TWO-STORY | 3 BEDROOMS | 2.5 BATHROOMS | 3 BAY TANDEM GARAGE
OPTIONAL: COVERED PATIO | BEDROOM 4 AT DEN | BEDROOM 5 AT LOFT | 4 BAY GARAGE



ELEVATION A - SPANISH



ELEVATION B - BUNGALOW



ELEVATION C - COTTAGE



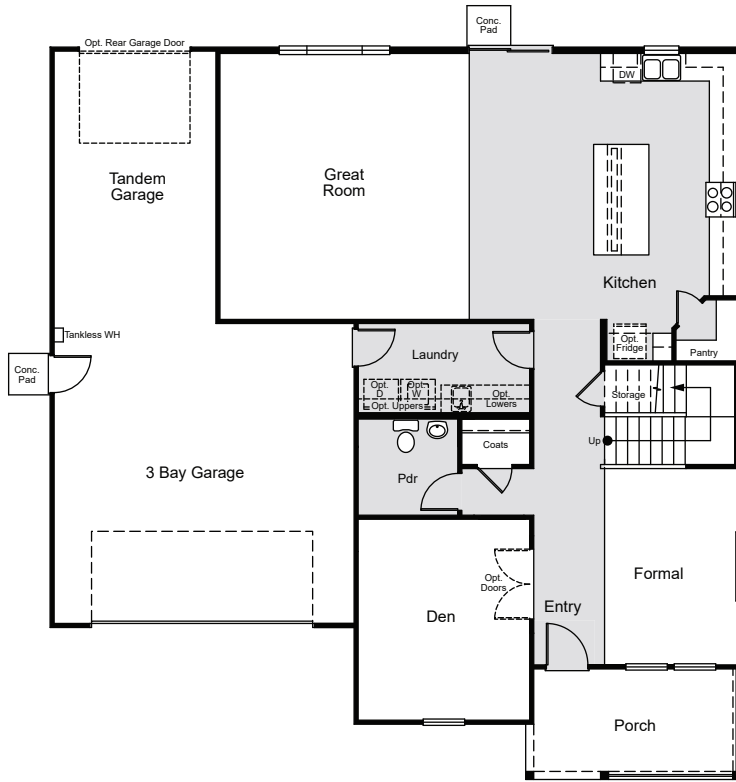
Price, plans and terms are effective on the date of publication and subject to change without notice. Depictions of homes or other features are conceptual. Decorative items and other items shown may be decorator suggestions that are not included in the purchase price and availability may vary. Persons in photos do not reflect racial preference and housing is open to all without regard to race, color, religion, sex, handicap, familial status, or national origin. ©2020 Century Communities.

Floor Plans

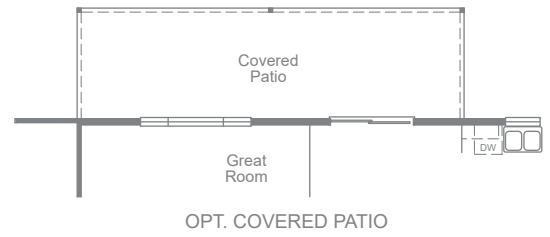


**CENTURY
COMMUNITIES**

A HOME FOR EVERY DREAM



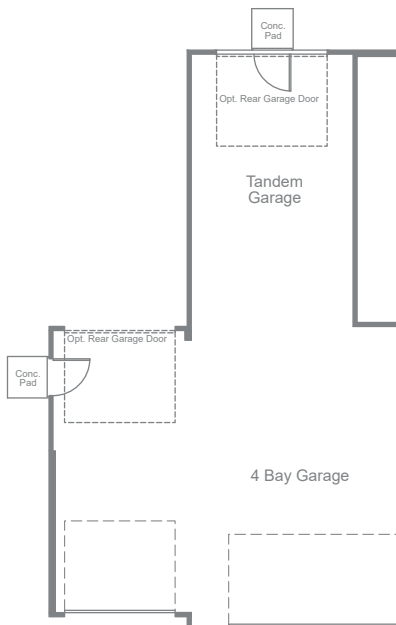
FIRST FLOOR



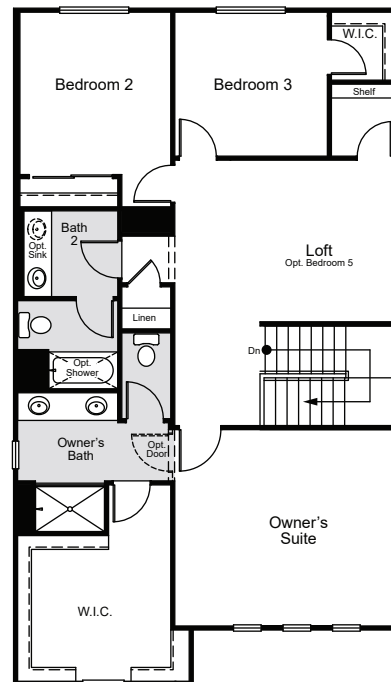
OPT. COVERED PATIO



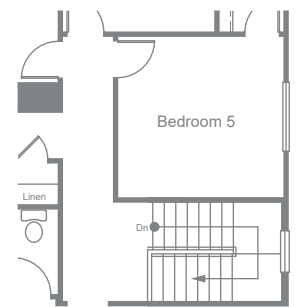
OPT. BEDROOM 4 @ DEN



OPT. 4 BAY GARAGE



SECOND FLOOR



OPT. BEDROOM 5 @ LOFT



Price, plans and terms are effective on the date of publication and subject to change without notice. Depictions of homes or other features are conceptual. Decorative items and other items shown may be decorator suggestions that are not included in the purchase price and availability may vary. Persons in photos do not reflect racial preference and housing is open to all without regard to race, color, religion, sex, handicap, familial status, or national origin. ©2020 Century Communities.