

ENCLAVE AT MISSION FALLS

THE SIERRA COLLECTION

THE PENTHOUSE II

1,515 SQ. FT. | SINGLE-LEVEL PENTHOUSE | 2 BEDROOMS | 2 BATHROOMS | 1 BAY GARAGE | ELEVATOR



FLAT A 5 PLEX



FLAT A 6 PLEX



FLAT A 7 PLEX

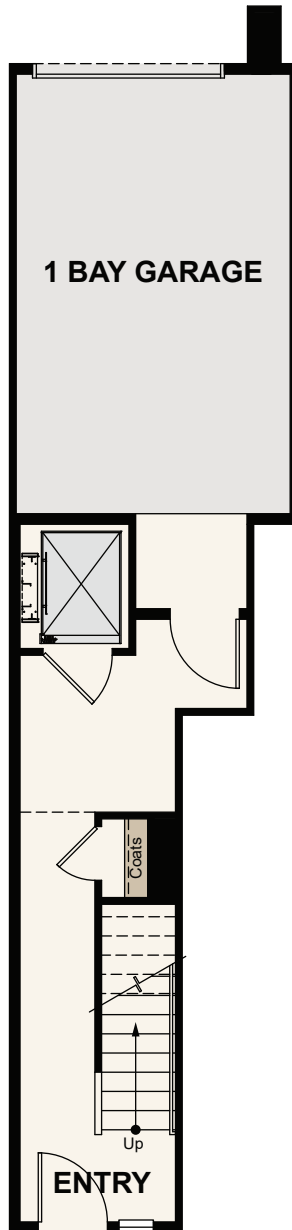


FLAT A 8 PLEX

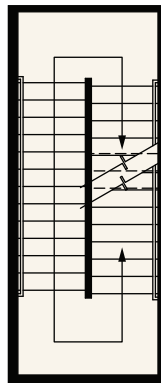


Price, plans and terms are effective on the date of publication and subject to change without notice. Depictions of homes or other features are conceptual. Decorative items and other items shown may be decorator suggestions that are not included in the purchase price and availability may vary. Persons in photos do not reflect racial preference and housing is open to all without regard to race, color, religion, sex, handicap, familial status, or national origin. ©2021 Century Communities.

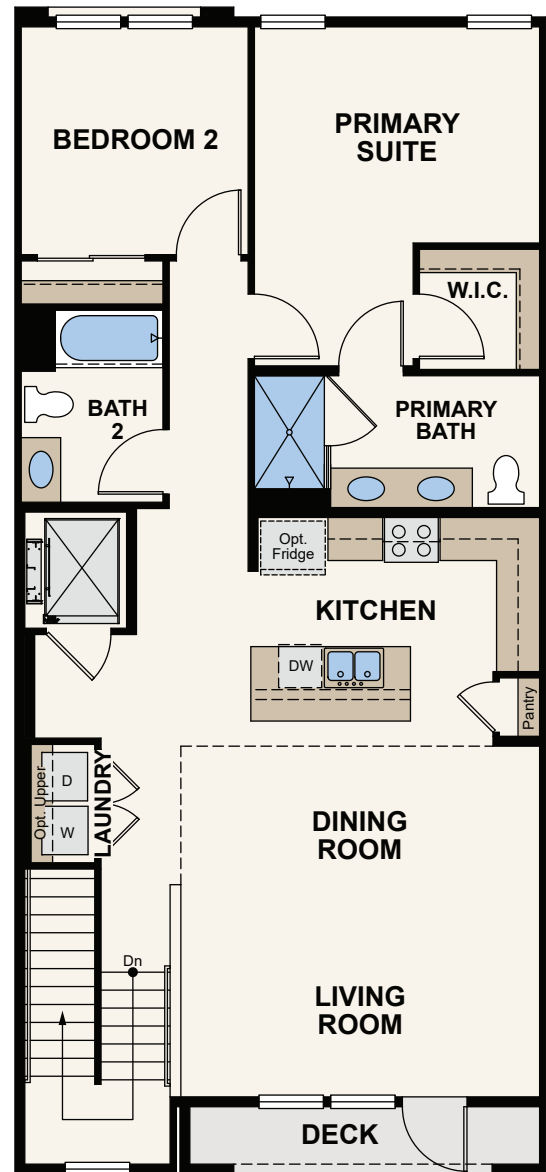
Floor Plans



FIRST FLOOR



SECOND FLOOR



THIRD FLOOR



Price, plans and terms are effective on the date of publication and subject to change without notice. Depictions of homes or other features are conceptual. Decorative items and other items shown may be decorator suggestions that are not included in the purchase price and availability may vary. Persons in photos do not reflect racial preference and housing is open to all without regard to race, color, religion, sex, handicap, familial status, or national origin. ©2021 Century Communities.

ENCLAVE AT MISSION FALLS

SIERRA COLLECTION

DISTINGUISHED EXTERIORS

- Detailed architectural styling with stucco and/or siding (per building)
- Architecturally selected exterior color palettes
- Eagle® concrete tile roofing
- Spacious 1-bay garage
- Covered decks (per plan)

INVITING INTERIORS

- Thoughtfully designed living spaces with great rooms and spacious kitchens
- 5-1/4" baseboards throughout
- Craftsman-styled interior doors
- 10' ceilings on first floor with 9' ceilings on second floor
- Bright chrome door hardware and fixtures throughout
- LED lighting throughout
- Shaw® carpeting with 1/2" - 6 pound pad (select areas)
- Interior laundry with optional built-in cabinetry (per plan)

EASY-CARE BATHS

- Chrome Moen® plumbing fixtures and faucets including undermounted sinks
- Spacious vanities with solid surface Cultured Marble and Marble Matte White 4" backsplash
- Fiberglass tub shower at secondary bath
- Designer-selected handset 17"x17" tile (select areas)

GOURMET KITCHENS

- Custom Maple wood cabinetry with European-style concealed hinges
- Gourmet granite slab countertop with matching 6" backsplash throughout
- Chrome Moen® faucet with high arc pulldown sprayer
- Whirlpool® appliance package including:
 - 30" slide-in gas range
 - Dishwasher
 - Venting microwave hood
 - Washer & dryer
- Designer-selected handset 17"x17" tile flooring (select areas)
- Spacious islands with room for seating
- USB charging port installed for everyday electronics (at kitchen)

OWNER'S SUITE

- Elegantly designed owner's suite with separate bathroom and spacious walk-in closet
- Dual vanities with solid surface Cultured Marble slab countertops with 1-1/2" square edge and Marble Matte White 4" backsplash
- Moen® chrome plumbing fixtures and faucets including undermounted sinks
- Separate water closet
- Fiberglass pan with Cultured Marble Matte White shower surround

QUALITY GREEN-BUILT FEATURES

- Energy-efficient Low-E dual -paned vinyl windows
- Fire sprinkler system
- Smoke detectors with battery backup and carbon monoxide detectors
- Tankless Rinnai® gas water heaters
- Solar Panels (with the option to purchase or lease)



Price, plans and terms are effective on the date of publication and subject to change without notice. Depictions of homes or other features are conceptual. Decorative items and other items shown may be decorator suggestions that are not included in the purchase price and availability may vary. Persons in photos do not reflect racial preference and housing is open to all without regard to race, color, religion, sex, handicap, familial status, or national origin. ©2021 Century Communities.