

NORTH PARK WOODS

Elevation A



Elevation B



Elevation C



Elevation D



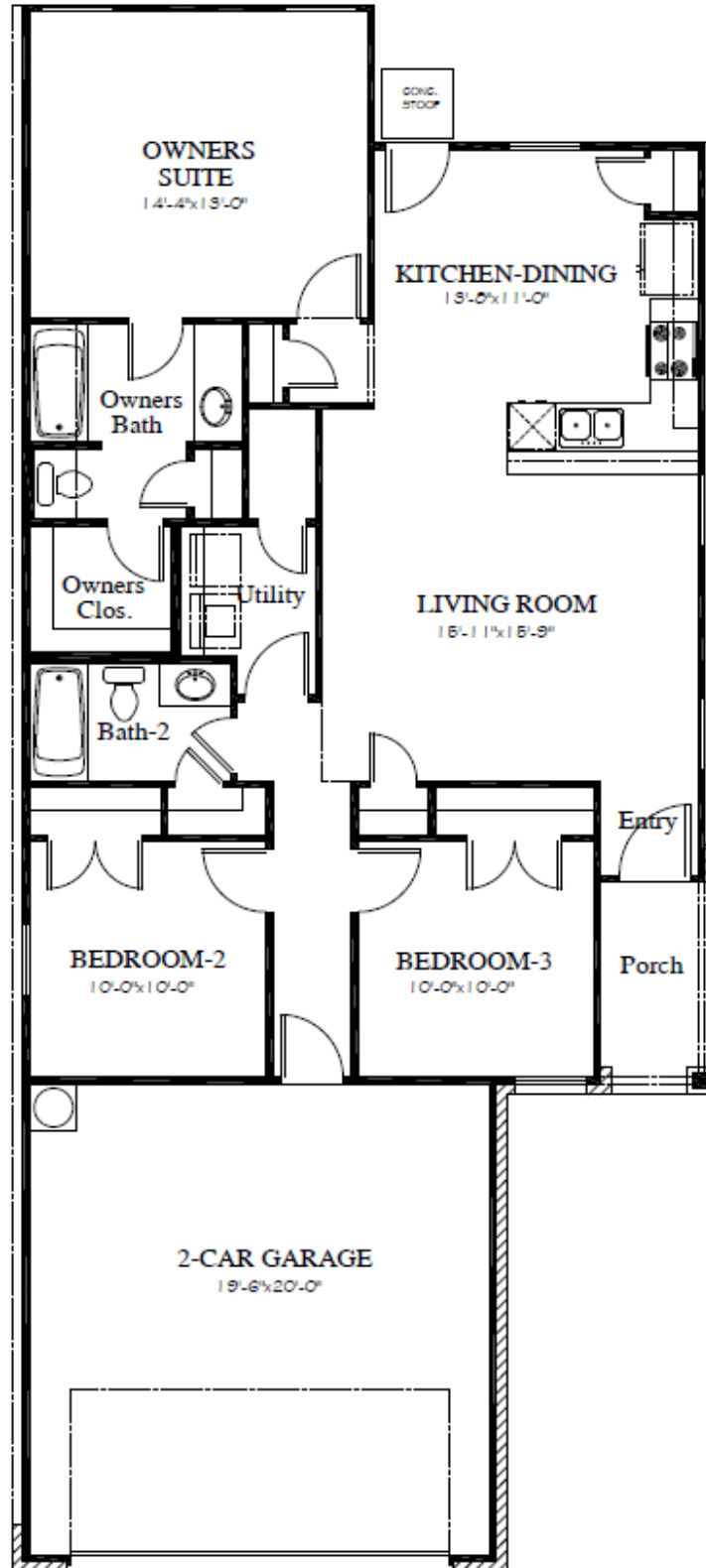
HUXLEY

1,205 SQ FT, 3 BED, 2 BATH

HUXLEY

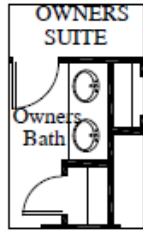
1,205 SQ. FT. | ONE-STORY

3 BEDROOMS | 2 BATHROOMS | 2-CAR GARAGE

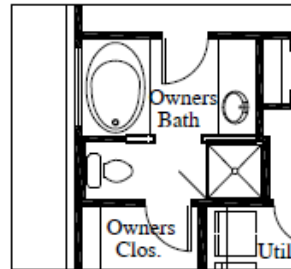


Price, plans and terms are effective on the date of publication and subject to change without notice. Depictions of homes or other features are conceptual. Decorative items and other items shown may be decorator suggestions that are not included in the purchase price and availability may vary. Persons in photos do not reflect racial preference and housing is open to all without regard to race, color, religion, sex, handicap, familial status, or national origin. ©2019 Century Communities. 03.08.19.

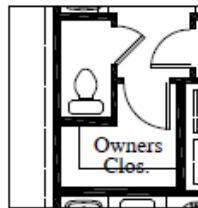
OPTIONS



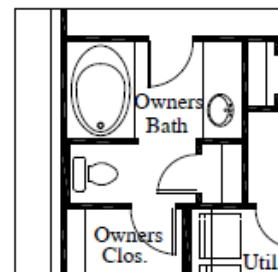
**OPTIONAL
DOUBLE SINK
OWNERS BATH**



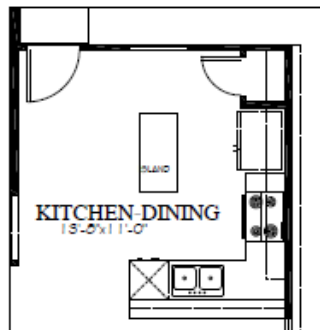
**OPTIONAL SEPARATE
GARDEN TUB and SHWR
OWNERS BATH**



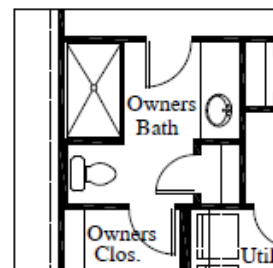
**OPTIONAL
WATER CLOSET
OWNERS BATH**



**OPTIONAL COMINATION
GARDEN TUB and SHWR
OWNERS BATH**



**OPTIONAL ISLAND
KITCHEN-DINING**



**OPTIONAL
WALK-IN SHWR
OWNERS BATH**



OPTIONAL COVERED PATIO