

HOMESTEAD AT CRYSTAL VALLEY

INCLUDED FEATURES

REMARKABLE EXTERIORS

- 30 year dimensional shingles
- Galvanized steel rain gutters with 5' downspout extensions (where applicable)
- Weather resistant fiber-cement siding
- 2 Bay garage, with drywall finish adjoining all living spaces, and solid fire rated entry door
- 7' Insulated, raised panel garage door
- Front yard landscaping and sprinkler system
- 5' Wing fencing with single gate

IMPRESSIVE INTERIORS

- 2-panel interior doors with chrome hardware
- Beautiful birch cabinetry throughout home
- Walls and ceilings in knock down finish
- Sherwin-Williams® paint
 - Walls & ceilings in low-sheen finish
 - Baseboards & trim in semi-gloss finish
- Resilient vinyl flooring in entry,

kitchen, bathrooms and laundry

- Secondary baths with 60 x 30" tub-shower, ceramic tile surround, and single handle chrome faucet
- Laundry room located on bedroom level
- Dual port telephone/cable wiring in great room and owner's suite

CONTEMPORARY KITCHENS

- Laminate countertops with waterfall edge
- Birch cabinetry with 36" uppers
- Whirlpool® Appliances:
 - 30" Smooth-top electric range and oven with window
 - 30" Micro-hood with 2-speed venting and light
 - Large capacity dishwasher
- Stainless steel double compartment sink
- Single handle chrome faucet with pull out sprayer
- 1/3 Horsepower disposal
- Ice maker line to refrigerator

PRIVATE LUXURY OF OWNER'S SUITES

- Walk-in closet
- Shower with ceramic tile surround, solid shower base, and single handle chrome faucet
- Porcelain-on-steel sink in white with chrome lever faucet
- Water closet with Kohler® water-saver toilet in white finish

ENERGY EFFICIENCY

- 92% Efficient gas furnace with Honeywell® thermostat
- 50 Gallon gas water heater
- Insulation and weather stripping
- White vinyl dual-pane windows with Low-E glass and screens per plan



HOMESTEAD AT CRYSTAL VALLEY

THE PLATINUM RESIDENCE 29204



HOMESTEAD AT CRYSTAL VALLEY

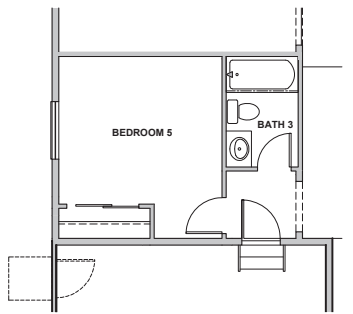


THE PLATINUM

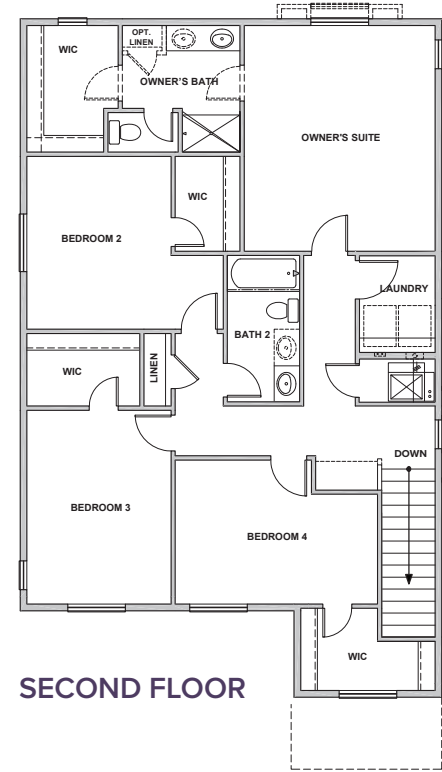
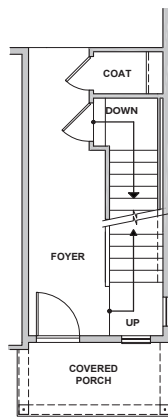
APPROX. 2,211 SQ. FT. | TWO-STORY

4 - 5 BEDROOMS | 2.5 - 3 BATHROOMS | 2 BAY GARAGE

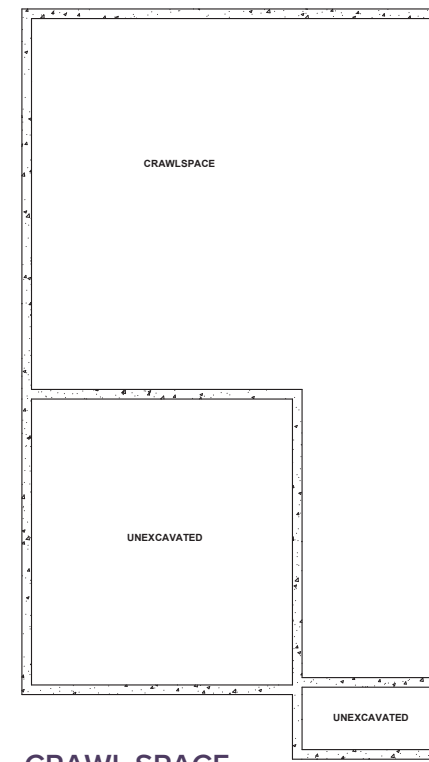
OPTIONAL BEDROOM 5
W/BATH 3



FIRST FLOOR STAIRS
WITH OPTIONAL BASEMENT

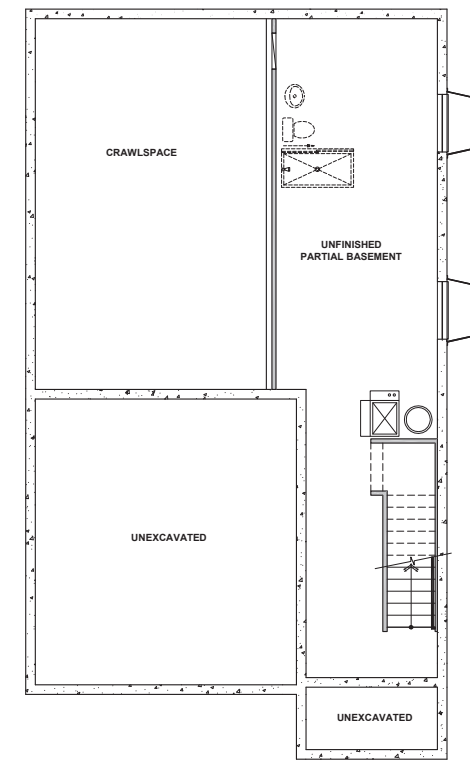


SECOND FLOOR

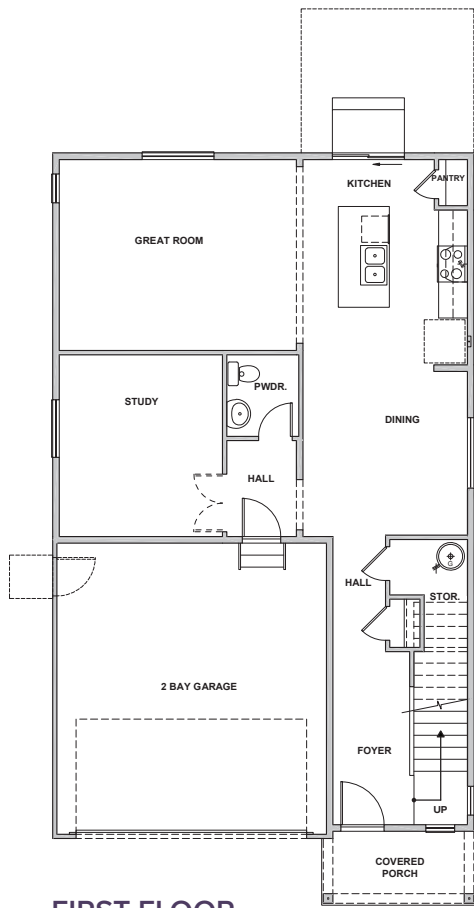
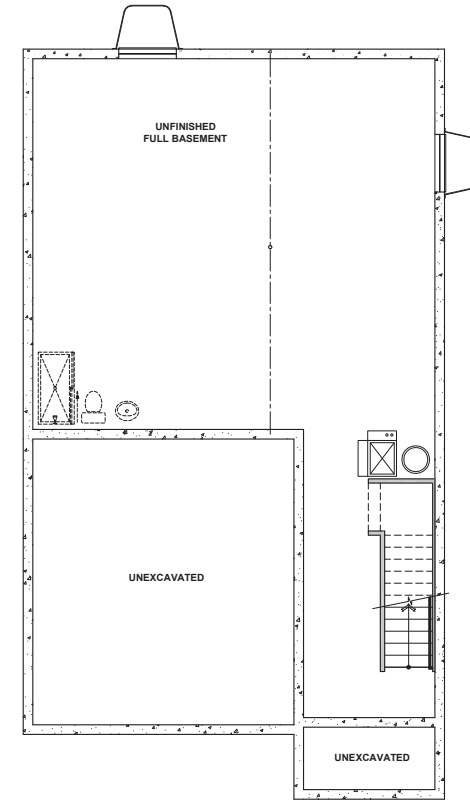


CRAWL SPACE

OPTIONAL PARTIAL
FINISHED BASEMENT

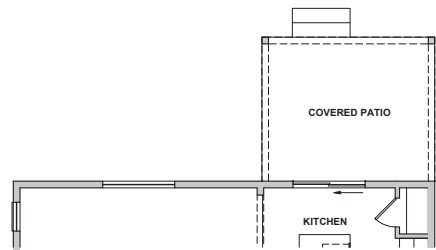


OPTIONAL FULL
FINISHED BASEMENT

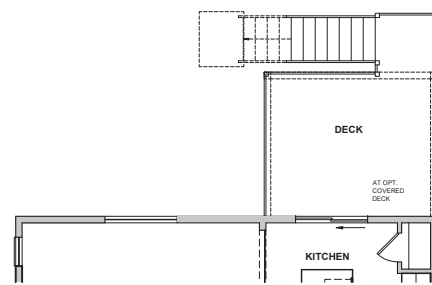


FIRST FLOOR

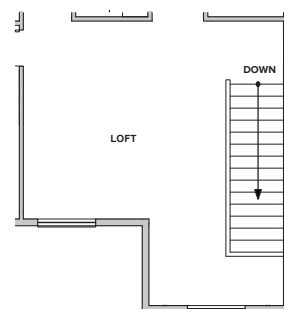
OPTIONAL COVERED PATIO



OPTIONAL COVERED DECK
AT WALK-OUT/GARDEN LEVEL



OPTIONAL LOFT



PRELIMINARY



Seller reserves the right to make changes or modifications to plans, amenities, maps, plan specifications, materials, features, and colors without notice. Maps, plans, landscaping and elevation renderings are artist's conceptions, are not to scale, and may not accurately depict the homes or lots as they are built. These illustrations may depict options and features that are not standard on all models. Optional features may be included in the purchase, and if included, will vary according to size and location of the lot. Exterior treatments, square footages, window locations, and room configurations may vary with elevation. Model home interior decorating, options, landscaping, fencing, and other amenities are for display purposes only. All marketing material is for illustrative purposes only and not a part of a legal contract. Square footages are approximate. All prices, plans, standard features, specifications, options, availability and estimated delivery dates are subject to change without prior notice. Additional restrictions may apply. See a New Home Counsellor for further details. Depictions of homes or other features are conceptual. Decorative items and other items shown may be decorator suggestions that are not included in the purchase price and availability may vary. Persons in photos do not reflect racial preference and housing is open to all without regard to race, color, religion, sex, handicap, familial status, or national origin. ©12/2020 Century Communities.