

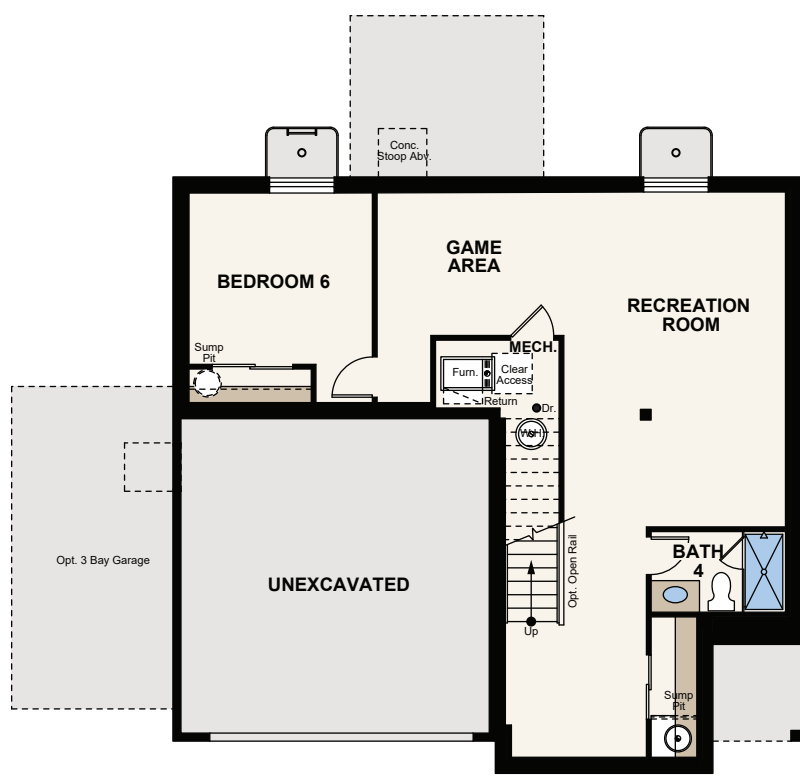
Floor Plan



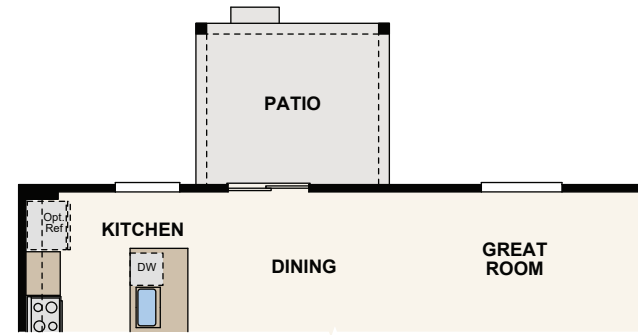
MERIDIAN RANCH

THE SILVERTHORNE - 39206

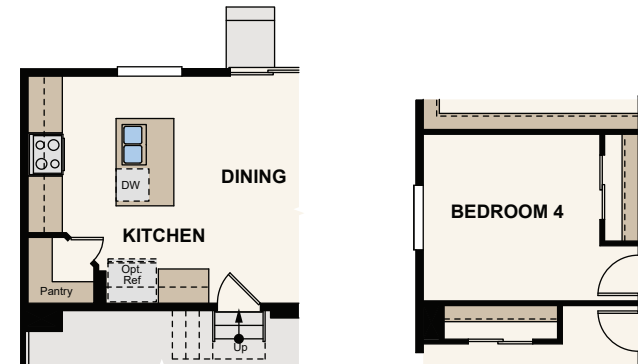
TWO-STORY | 2237-3064 SQ. FT | 5-6 BED | 3-4 BATH | 2-3 BAY GARAGE



OPT. FULL FINISHED BASEMENT



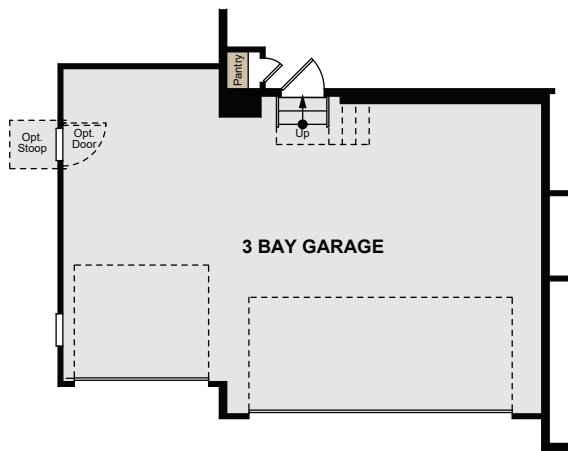
OPT. PATIO / OPT. COVERED PATIO



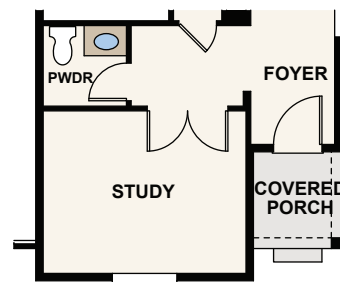
OPT. EXPANDED KITCHEN



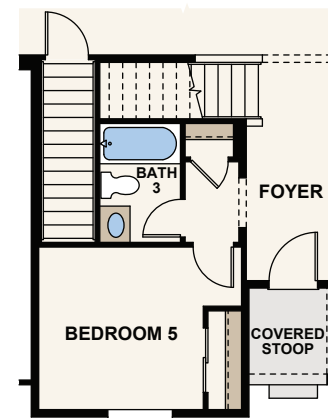
OPT. BEDROOM 4



OPT. 3 BAY GARAGE



OPT. STUDY W/ PWDR AT CRAWL



OPT. STAIRS AT BASEMENT



39206 A



Meridian Ranch

THE SILVERTHORNE - 39206

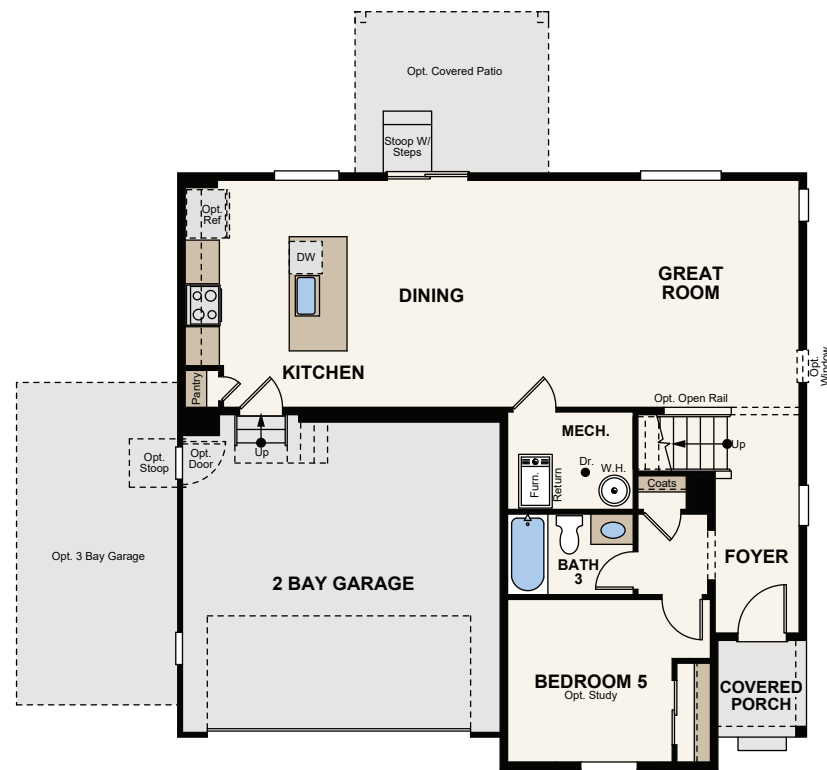


39206 B



39206 C

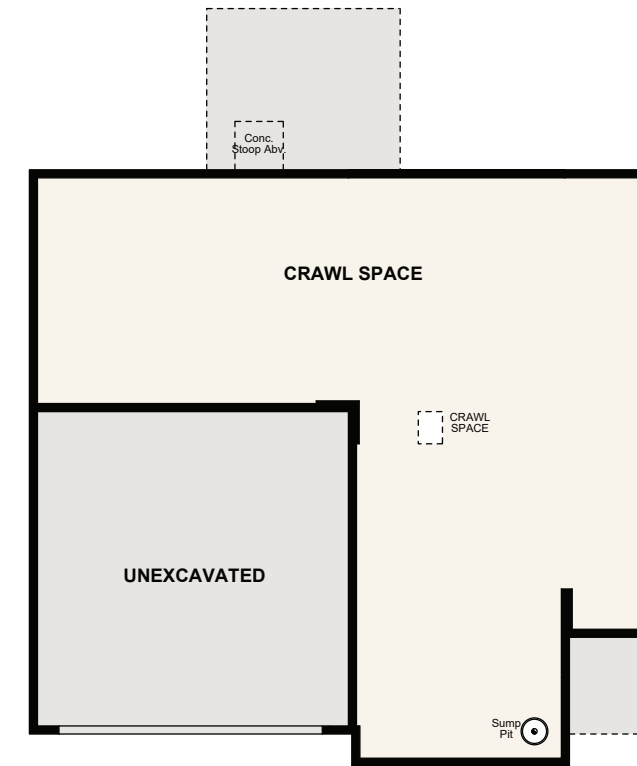
Floor Plans



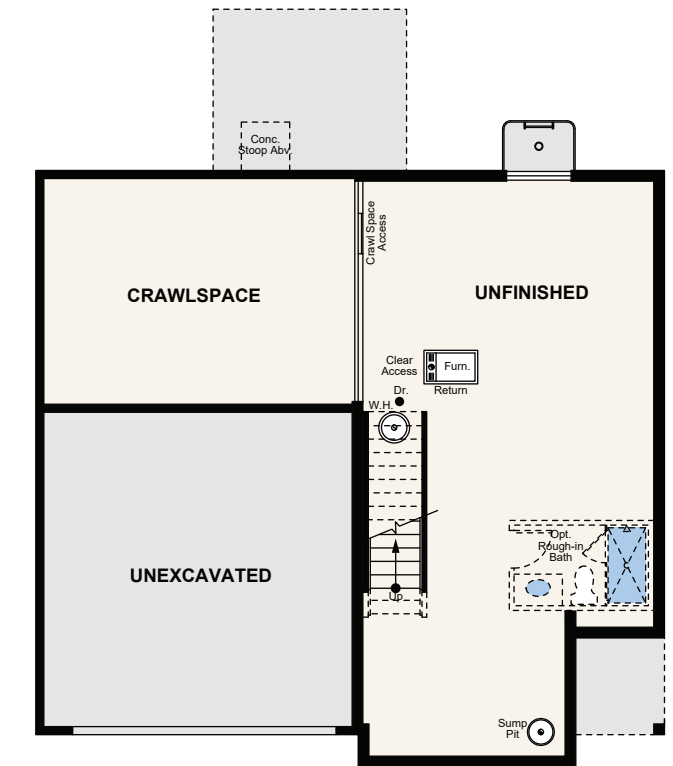
FIRST FLOOR



SECOND FLOOR



CRAWL SPACE



OPT. FULL UNFINISHED BASEMENT



Seller reserves the right to make changes or modifications to plans, amenities, maps, plan specifications, materials, features, and colors without notice. Maps, plans, landscaping and elevation renderings are artist's conceptions, are not to scale, and may not accurately depict the homes or lots as they are built. These illustrations may depict options and features that are not standard on all models. Optional features may be included in the purchase, and if included, will vary according to size and location of the lot. Exterior treatments, square footages, window locations, and room configurations may vary with elevation. Model home interior decorating, options, landscaping, fencing, and other amenities are for display purposes only. All marketing material is for illustrative purposes only and not a part of a legal contract. Square footages are approximate. All prices, plans, standard features, specifications, options, availability and estimated delivery dates are subject to change without prior notice. Additional restrictions may apply. See a New Home Counsellor for further details. Depictions of homes or other features are conceptual. Decorative items and other items shown may be decorator suggestions that are not included in the purchase price and availability may vary. Persons in photos do not reflect racial preference and housing is open to all without regard to race, color, religion, sex, handicap, familial status, or national origin. ©2020 Century Communities.