

MAPLETON HEIGHTS

GLACIER | PLAN 49203

APPROX. 4,196 SQ. FT. | 2-STORY | 3 BEDROOMS | 2.5 BATHROOMS | 3-BAY GARAGE
GOURMET KITCHEN, ADDITIONAL BEDROOM, GRAND PRIMARY BATH, AND MORE



ELEVATION A



ELEVATION B



ELEVATION C

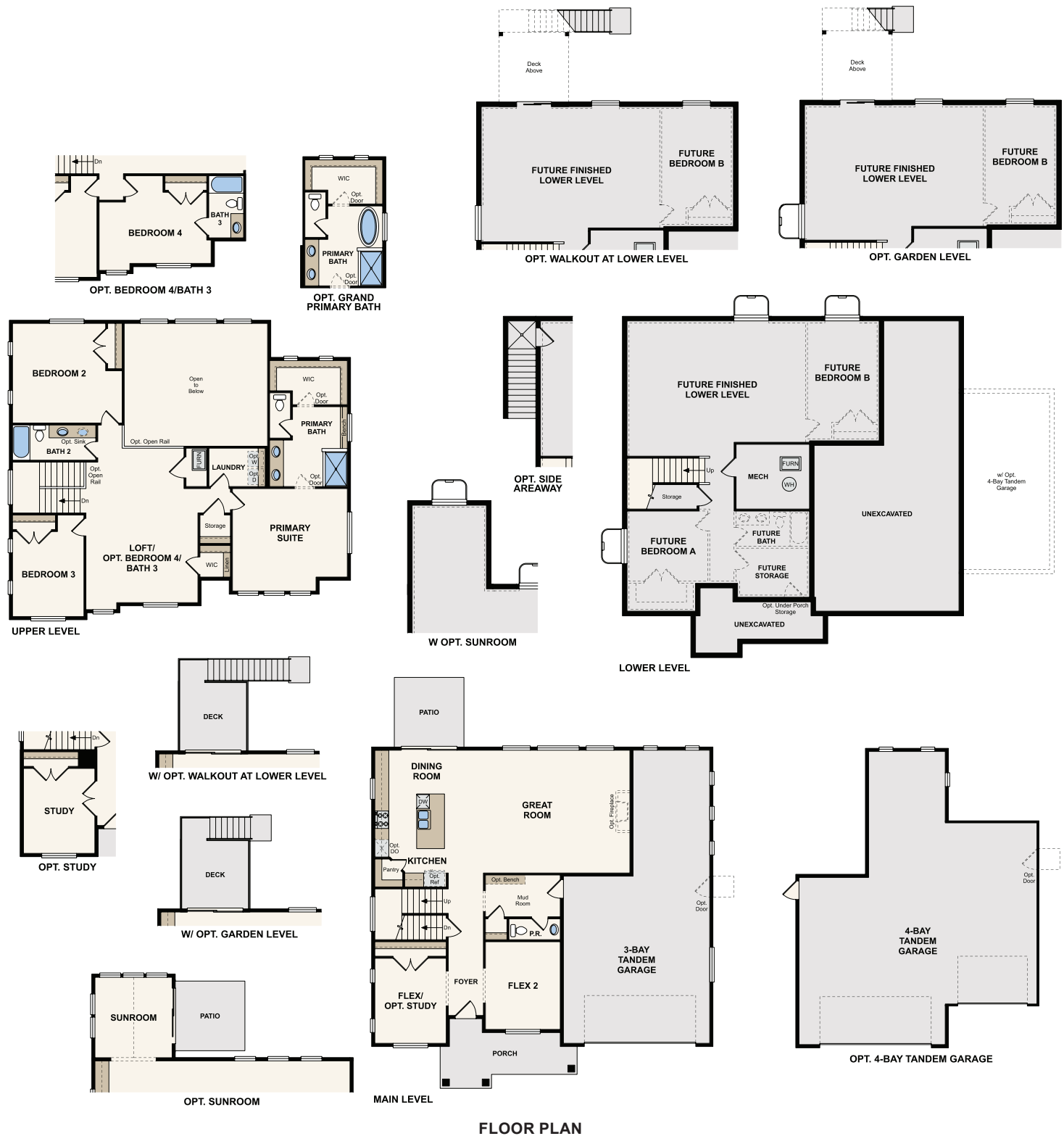


Prices, plans, and terms are effective on the date of publication and subject to change without notice. Square footage/acreage shown is only an estimate and actual square footage/acreage will differ. Buyer should rely on his or her own evaluation of usable area. Depictions of homes or other features are artist conceptions. Hardscape, landscape, and other items shown may be decorator suggestions that are not included in the purchase price and availability may vary. ©2020 Century Communities, Inc. Rev. 03/17/2022

Floor Plans



CENTURY
COMMUNITIES®



FLOOR PLAN



Prices, plans, and terms are effective on the date of publication and subject to change without notice. Square footage/acreage shown is only an estimate and actual square footage/acreage will differ. Buyer should rely on his or her own evaluation of usable area. Depictions of homes or other features are artist conceptions. Hardscape, landscape, and other items shown may be decorator suggestions that are not included in the purchase price and availability may vary. ©2020 Century Communities, Inc. Rev. 03/17/2022