

# PARKVIEW AT CANDELAS

## INCLUDED FEATURES

### LONG LASTING EXTERIORS

- Long lasting 30 year shingle roofing
- 8" front door entry door
- Sustainable weather resistant fiber-cement siding with durable latex paint finish
- Brick or masonry accents per plan
- 5" primed and painted galvanized steel gutters and down-spouts
- Two-bay garage, with Insulated 8' garage door composed of raised-panel textured steel
- Concrete porch, walkways and steps per plan

### IMPRESSIVE INTERIORS

- 2-panel interior and closet doors with lever-style chrome hardware
- Beautiful birch cabinetry throughout home
- Walls and ceiling texture in knock out finish
- **Sherwin Williams®** paint
  - Walls and ceilings in satin finish
  - Baseboards & trim in semi-gloss finish
- Wood grain laminate flooring in entry and kitchen
- **Ceramic tile** flooring in Owner's bath

- Resilient sheet vinyl flooring in bath and laundry room
- In-unit washer hook up
- Secondary baths with 30 x 60" tub-shower, 6 x 6" ceramic tile surround and single handle chrome faucet
- Water-saver toilets in white finish
- Dual port telephone/cable wiring in great room and owner's suite

### CONTEMPORARY KITCHENS

- Slab granite countertop with 4" backsplash
- Birch cabinetry with 42" uppers
- Whirlpool® appliances:
  - Free-standing electric range, 30" ceramic glass cooktop and self-cleaning oven
  - Microwave/hood combo - 1.7 cubic foot capacity - with 2-speed venting, and light
  - Large capacity dishwasher with 4 automatic cycles
- Stainless steel double compartment undermount sink
- Single chrome faucet with separate pull-out sprayer
- 1/3 horsepower disposal
- Ice maker line to refrigerator

### PRIVATE LUXURY OF MASTER SUITES

- Owner's suite strategically located for privacy
- Spacious walk-in closet
- Walk-in shower with 6 x 6" ceramic tile, glass shower enclosure with chrome frame, and single handle chrome faucet
- Dual sinks with center-set two handle chrome faucet
- Water closet with elongated water-saver toilet in white finish

### WHOLE-HOUSE ENERGY SAVINGS

- Central heating: 92% efficient gas furnace with programmable thermostat to maintain year-round comfort and reduce utility bills
- 40 Gallon gas water heater for efficiency and lower energy cost
- Insulation and weather stripping
- Pre-wiring for future air conditioning
- White vinyl dual-pane windows with grids, included screens, and Low-E glass to help retain warmth in winter and cool air in summer



## PARKVIEW AT CANDELAS

## RESIDENCE 205

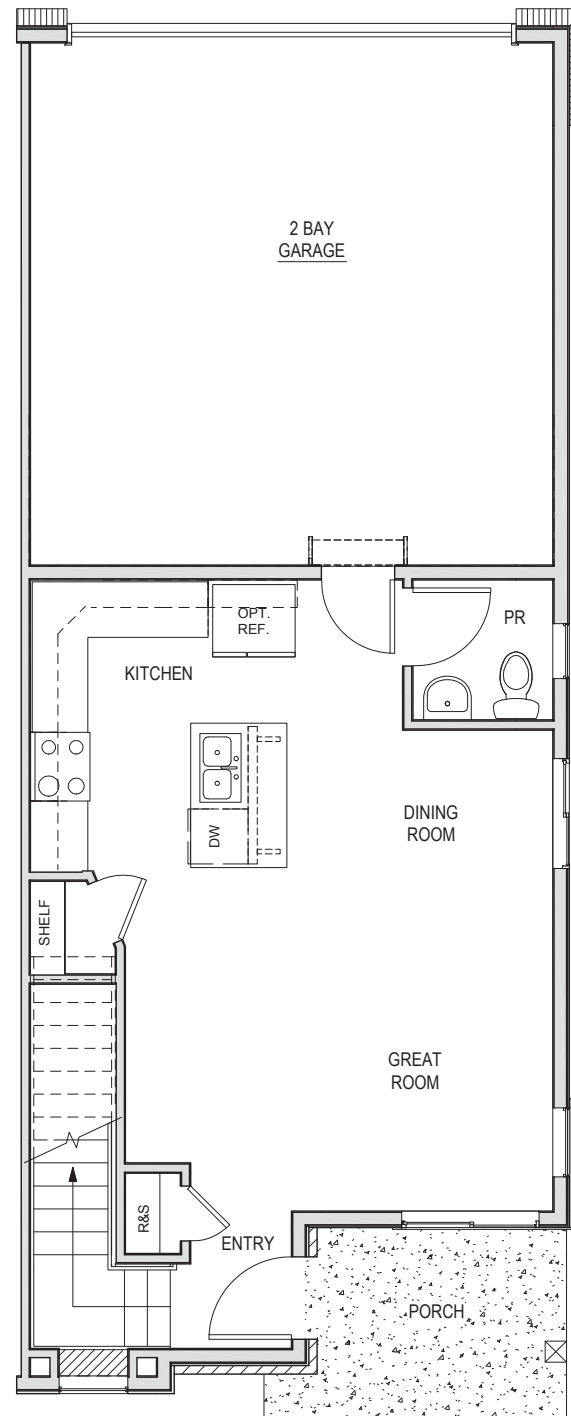




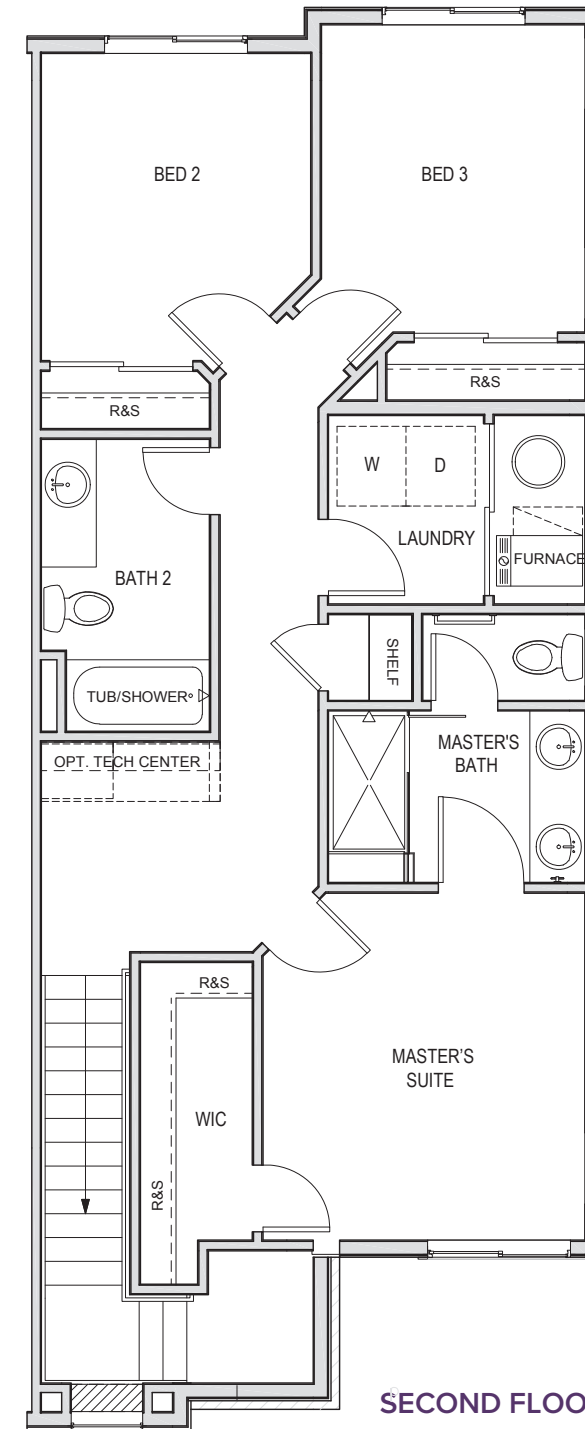
# PARKVIEW AT CANDELAS

## RESIDENCE 205

APPROX. 1,381 SQ. FT. | TOWNHOME  
3 BEDROOMS | 2.5 BATHROOMS | 2-BAY GARAGE



FIRST FLOOR



SECOND FLOOR

# PRELIMINARY



Seller reserves the right to make changes or modifications to plans, amenities, maps, plan specifications, materials, features, and colors without notice. Maps, plans, landscaping and elevation renderings are artist's conceptions, are not to scale, and may not accurately depict the homes or lots as they are built. These illustrations may depict options and features that are not standard on all models. Optional features may be included in the purchase, and if included, will vary according to size and location of the lot. Exterior treatments, square footages, window locations, and room configurations may vary with elevation. Model home interior decorating, options, landscaping, fencing, and other amenities are for display purposes only. All marketing material is for illustrative purposes only and not a part of a legal contract. Square footages are approximate. All prices, plans, standard features, specifications, options, availability and estimated delivery dates are subject to change without prior notice. Additional restrictions may apply. See a New Home Counsellor for further details. Depictions of homes or other features are conceptual. Decorative items and other items shown may be decorator suggestions that are not included in the purchase price and availability may vary. Persons in photos do not reflect racial preference and housing is open to all without regard to race, color, religion, sex, handicap, familial status, or national origin. ©12/2017 Century Communities.