

MAYFIELD

INCLUDED FEATURES

LONG LASTING EXTERIORS

- 30 year shingle roofing
- Sustainable, weather resistant fiber-cement siding with durable latex paint finish
- Stone or brick accents (per elevation)
- Two-bay garage, with drywall finish adjoining all living spaces, with solid fire rated entry door
- 8' Fiberglass garage door with weather stripping and threshold
- 8' **Therma-Tru**® front entry door
- 5" galvanized steel rain gutters with 5' downspout extensions (where applicable)
- Front yard landscaping with front yard irrigation
- 6' Privacy wing fencing in front with single gate

IMPRESSIVE INTERIORS

- 2-panel interior and closet doors with satin-nickle hardware and lever handles
- Beautiful birch cabinetry throughout home
- Walls and ceilings in knock down finish
- **Sherwin-Williams**® paint
 - Walls & ceilings in low sheen finish
 - Baseboards & trim in semi-gloss finish
- Beautiful laminate wood flooring in entry, kitchen, and nook

- Resilient vinyl flooring in laundry and bathrooms
- Secondary baths with tub-shower, 6 x 6" ceramic tile surround and single handle chrome faucet
- Stylish white **Decora**® light switches and outlet covers (per plan)
- White, water-saver toilets
- Dual port telephone/cable wiring in choice of great room, owner's suite, loft, or study
- Single port telephone wiring
- Air conditioning pre-wire
- Rough-in plumbing in basement

CONTEMPORARY KITCHENS

- Slab granite countertops with 4" backsplash
- Birch cabinetry with 42" upper cabinets
- **Whirlpool**® appliances including:
 - 30" gas range and oven with window
 - 30" Microwave/hood with 2-speed venting and light
 - Large capacity dishwasher with 3 automatic cycles
- Double compartment undermount stainless steel sink
- Single handle chrome faucet with separate sprayer
- 1/3 horsepower disposal
- Ice maker line to refrigerator

PRIVATE LUXURY OF PRIMARY SUITES

- Spacious walk-in closet off of four piece owner's bath
- Dual sinks in porcelain-on-steel white finish with dual handle chrome lever faucet
- Walk-in shower with 6 x 6" ceramic tile, solid shower base, and single handle chrome faucet in chrome finish
- Water closet with elongated water-saver toilet in white finish

WHOLE-HOUSE ENERGY SAVINGS

- Central heating; 92% efficient gas furnace with programmable thermostat to maintain year-round comfort and reduce utility bills
- 50 Gallon gas water heater for efficiency and lower energy cost
- Insulation and weather stripping
- White vinyl dual-pane windows with included screens, and Low-E glass to help retain warmth in winter and cool air in summer



MAYFIELD

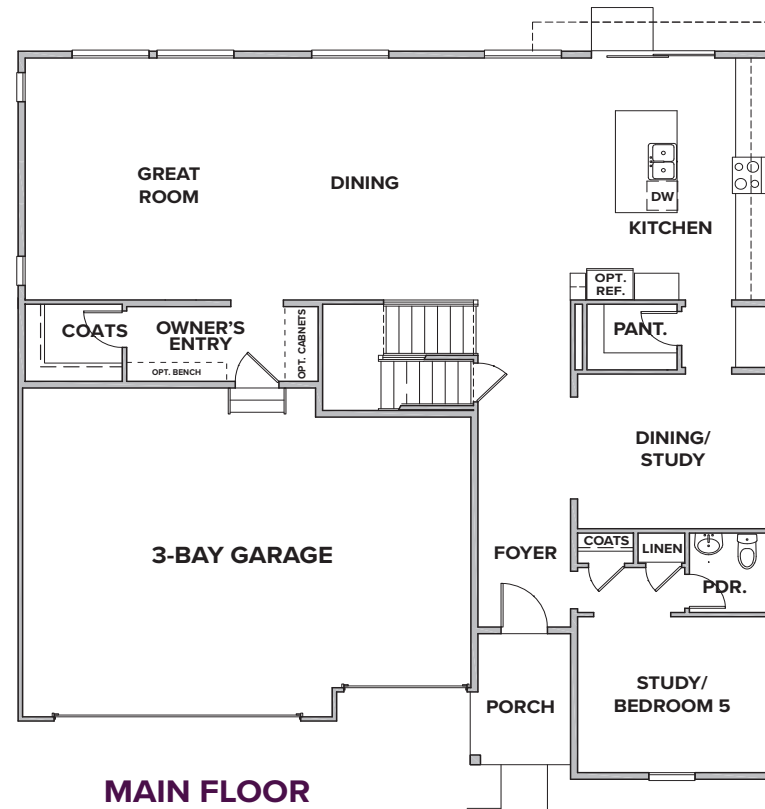
THE CORNELL RESIDENCE 50255



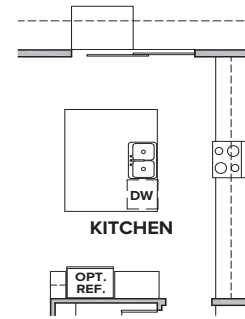
MAYFIELD

THE CORNELL

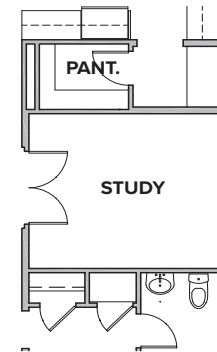
APPROX. 3,260 - 4,752 SQ. FT. | TWO-STORY
4 - 6 BEDROOMS | 3.5 - 5 BATHROOMS | 3 BAY GARAGE



OPTIONAL ENLARGED KITCHEN ISLAND



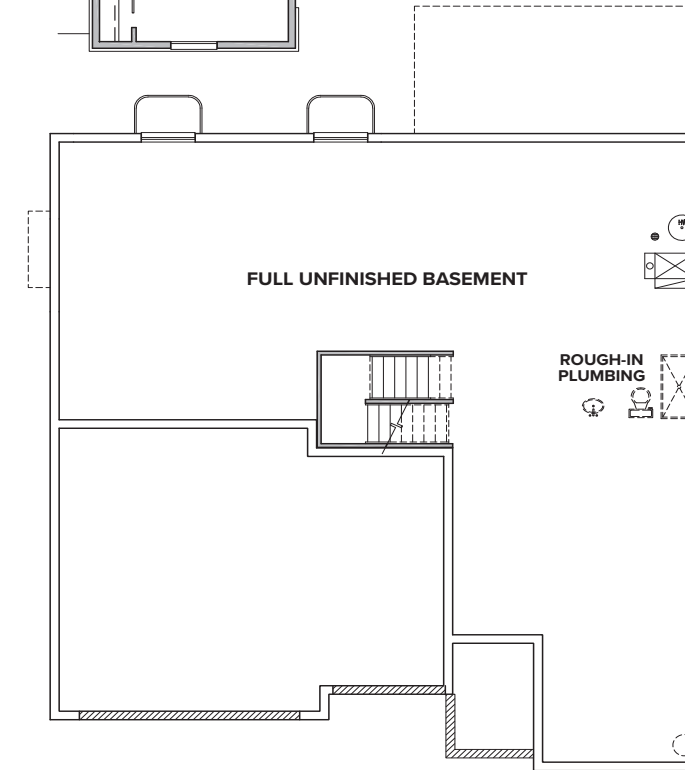
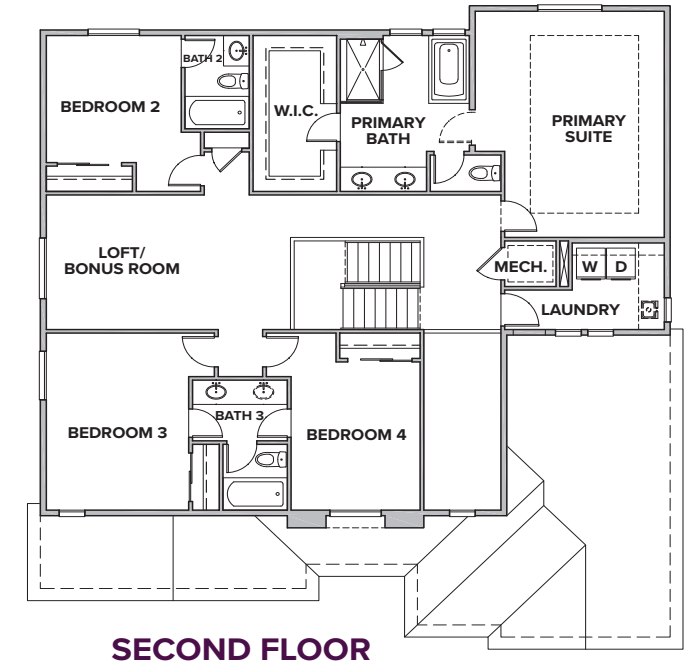
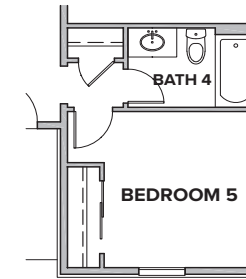
OPTIONAL STUDY



OPTIONAL BONUS ROOM

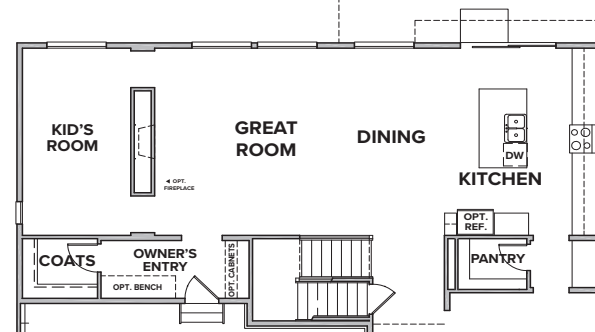


OPTIONAL BEDROOM 5

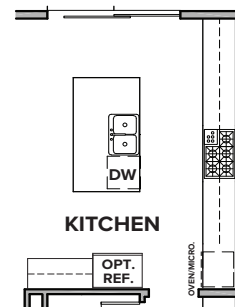


FULL UNFINISHED BASEMENT

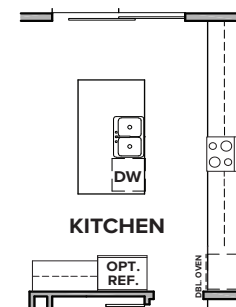
OPTIONAL KIDS ROOM



OPTIONAL CHEF'S KITCHEN



OPTIONAL GOURMET KITCHEN



PRELIMINARY



Seller reserves the right to make changes or modifications to plans, amenities, maps, plan specifications, materials, features, and colors without notice. Maps, plans, landscaping and elevation renderings are artist's conceptions, are not to scale, and may not accurately depict the homes or lots as they are built. These illustrations may depict options and features that are not standard on all models. Optional features may be included in the purchase, and if included, will vary according to size and location of the lot. Exterior treatments, square footages, window locations, and room configurations may vary with elevation. Model home interior decorating, options, landscaping, fencing, and other amenities are for display purposes only. All marketing material is for illustrative purposes only and not a part of a legal contract. Square footages are approximate. All prices, plans, standard features, specifications, options, availability and estimated delivery dates are subject to change without prior notice. Additional restrictions may apply. See a New Home Counsellor for further details. Depictions of homes or other features are conceptual. Decorative items and other items shown may be decorator suggestions that are not included in the purchase price and availability may vary. Persons in photos do not reflect racial preference and housing is open to all without regard to race, color, religion, sex, handicap, familial status, or national origin. ©03/2021Century Communities.