

# 400 LITTLETON VILLAGE

## INCLUDED FEATURES

### LONG LASTING EXTERIORS

- Long lasting 30 year shingle roofing
- Sustainable weather resistant fiber-cement siding with durable latex paint finish
- Brick/stucco accents per building
- 5" primed and painted galvanized steel gutters and down-spouts
- Street-level store front entry

### IMPRESSIVE INTERIORS

- Central elevator for convenience and accessibility
- Faux wood 2" horizontal window blinds
- 6'8" 5-panel interior doors with lever-style chrome hardware
- Beautiful birch cabinetry throughout home
- Walls and ceiling texture in orange peel finish
- **Sherwin Williams®** paint
  - Walls and ceilings in satin finish
  - Baseboards and trim in semi-gloss finish

- Wood grain laminate flooring in entry, kitchen, laundry and living
- In-unit laundry
- Euro shower doors in primary bath
- Secondary baths with 60 x 30" tub-shower, 6 x 6 ceramic tile surround, and single handle chrome faucet
- Water-saver toilets in white finish
- One dual port in the great room and one in the owner's bedroom
- One phone jack in owner's bedroom

### CONTEMPORARY KITCHENS

- Quartz countertop with tile backsplash
- Birch cabinetry with 42" uppers
- **Whirlpool®** appliances:
  - Free-standing electric range, 30" ceramic glass cooktop and self-cleaning oven
  - Microwave/hood combo, 1.7 cubic foot capacity - with 2-speed venting and light
  - Large capacity, Energy Star dishwasher with 4 automatic cycles

- Stainless steel undermount sink
- Single handle faucet - separate sprayer, chrome finish
- 1/3 horsepower disposal
- Ice maker line to refrigerator

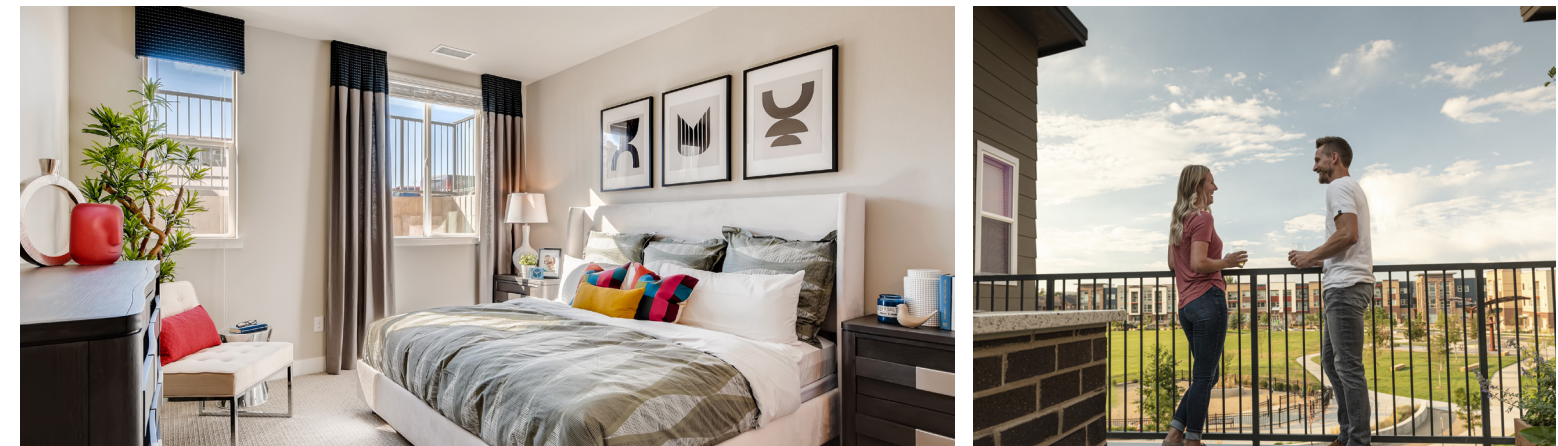
### WHOLE-HOUSE ENERGY SAVINGS

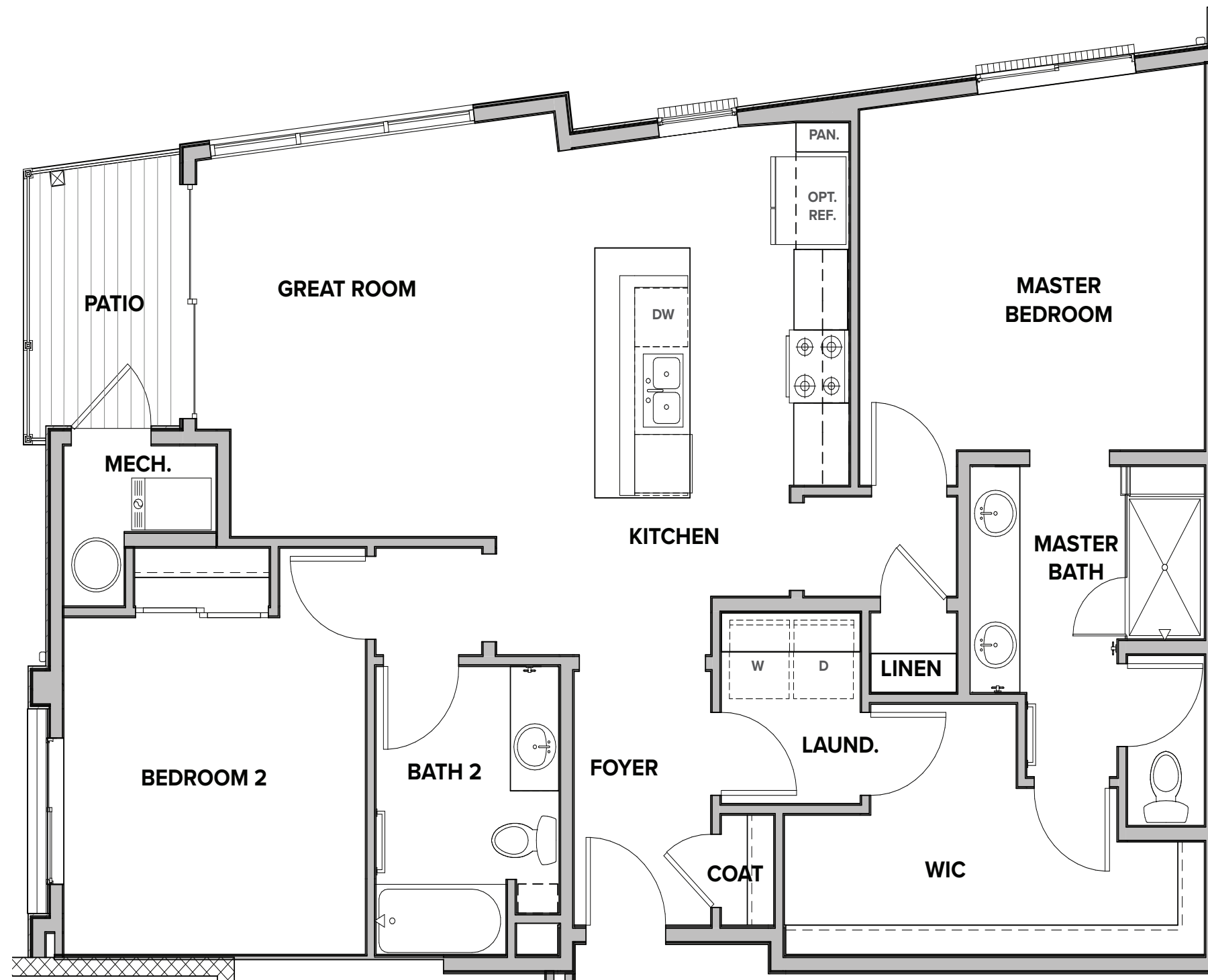
- Central heating & air conditioning: 92% efficient gas furnace with programmable thermostat to maintain year round comfort and reduce utility bills
- 40 gallon electric water heater for efficiency and lower energy cost
- Insulation and weather stripping
- White vinyl dual-pane windows with sills, grids, included screens, Low-E glass to help retain warmth in winter and cool air in summer



## 400 LITTLETON VILLAGE

## RESIDENCE 2D





PRELIMINARY

2D+

