

## MARKET PLACE

### BALLAD

1,853 SQ. FT. | TWO-STORY | 3 BEDROOMS | 2.5 BATHROOMS | 2 BAY GARAGE  
OPTIONAL: COVERED PATIO | EXTENDED COVERED PATIO | DEN AT DINING |  
TUB AT OWNERS SUITE | 3 BAY GARAGE



**ELEVATION A - EARLY CALIFORNIA**



**ELEVATION C - BUNGALOW**



**ELEVATION D - COTTAGE**



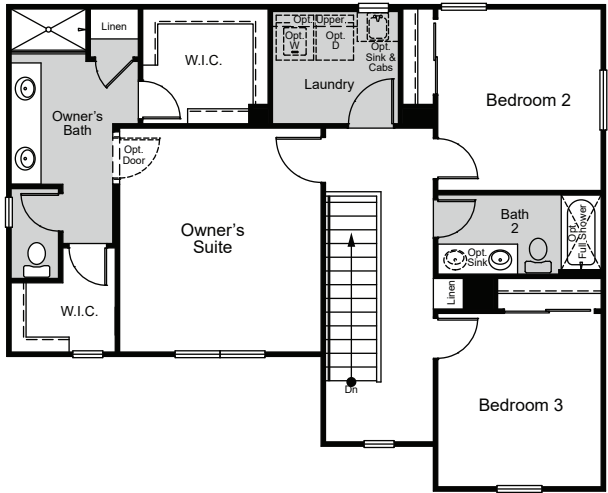
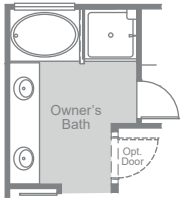
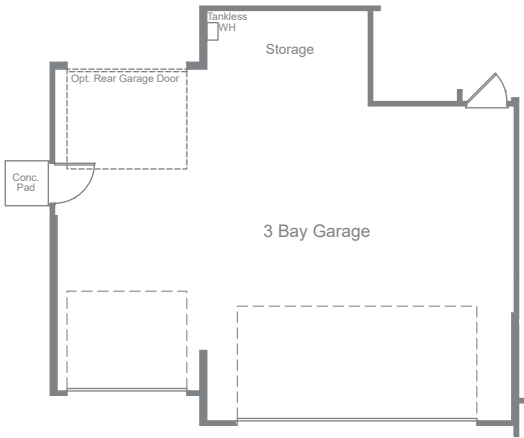
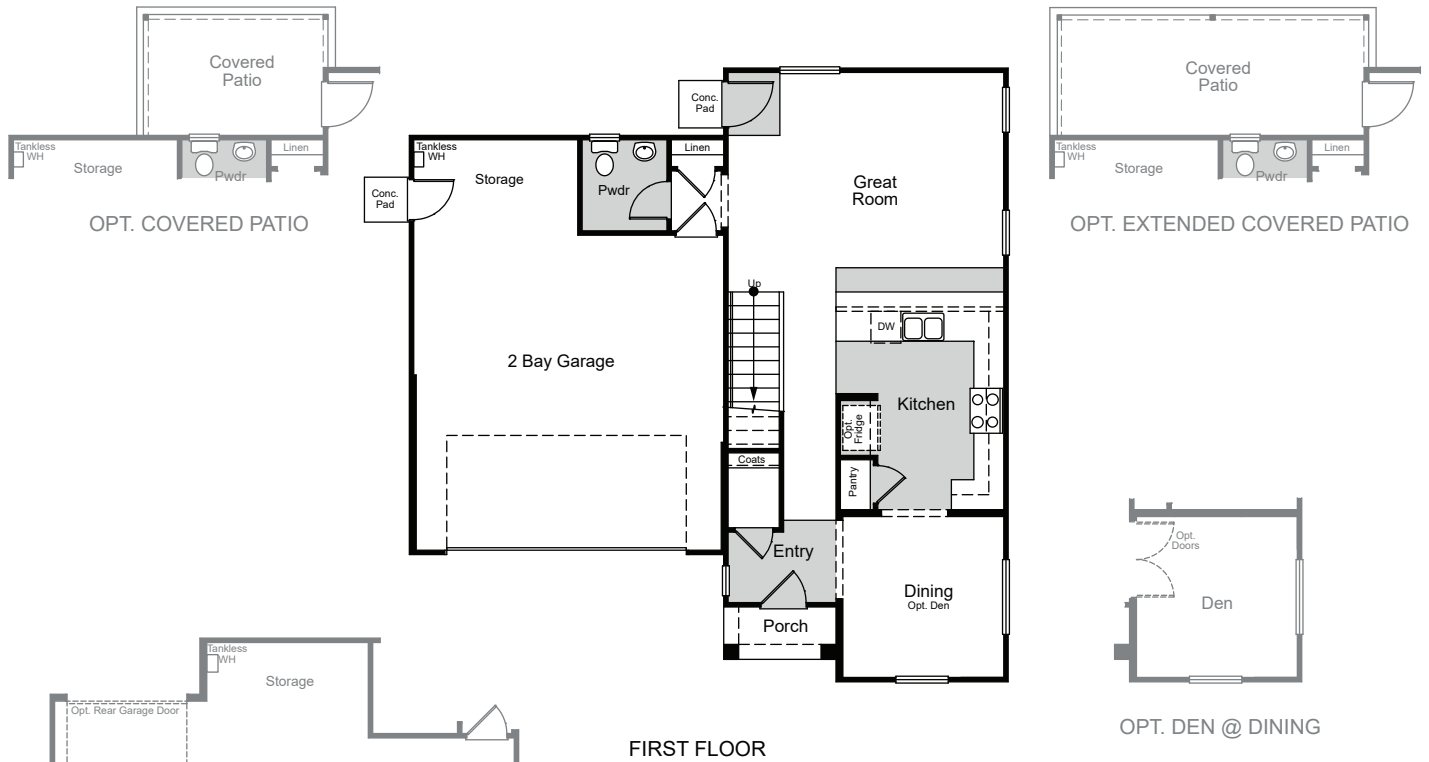
Price, plans and terms are effective on the date of publication and subject to change without notice. Depictions of homes or other features are conceptual. Decorative items and other items shown may be decorator suggestions that are not included in the purchase price and availability may vary. Persons in photos do not reflect racial preference and housing is open to all without regard to race, color, religion, sex, handicap, familial status, or national origin. ©2020 Century Communities.

# Floor Plans



**CENTURY  
COMMUNITIES**

A HOME FOR EVERY DREAM



Price, plans and terms are effective on the date of publication and subject to change without notice. Depictions of homes or other features are conceptual. Decorative items and other items shown may be decorator suggestions that are not included in the purchase price and availability may vary. Persons in photos do not reflect racial preference and housing is open to all without regard to race, color, religion, sex, handicap, familial status, or national origin. ©2020 Century Communities.