

THE CROSSINGS II

CRIMSON

APPROX. 2,790 SQ. FT. | 2-STORY | 4-7 BEDROOMS | 2.5-3 BATHROOMS | 2-3-BAY GARAGE



ELEVATION A - SPANISH



ELEVATION B - BUNGALOW



ELEVATION C - COTTAGE



Prices, plans, and terms are effective on the date of publication and subject to change without notice. Square footage/acreage shown is only an estimate and actual square footage/acreage will differ. Buyer should rely on his or her own evaluation of usable area. Depictions of homes or other features are artist conceptions. Hardscape, landscape, and other items shown may be decorator suggestions that are not included in the purchase price and availability may vary. ©2022 Century Communities, Inc. Rev. 02/16/2022

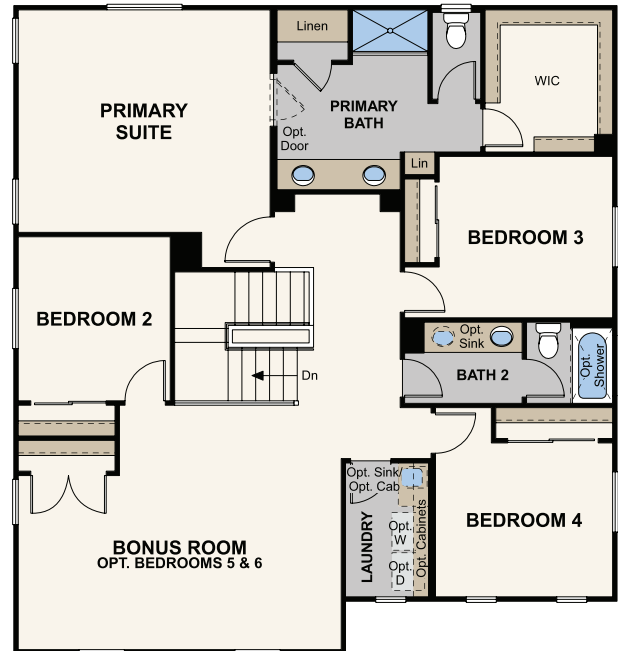
Floor Plans

CRIMSON

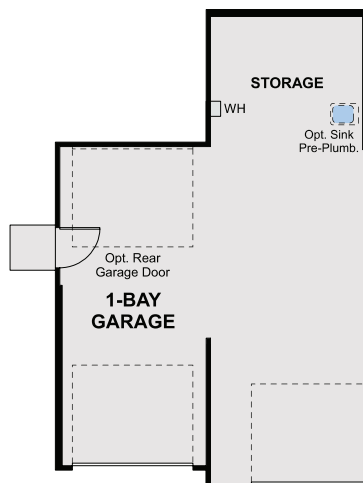
APPROX. 2,790 SQ. FT. | 2-STORY | 4-7 BEDROOMS | 2.5-3 BATHROOMS | 2-3-BAY GARAGE



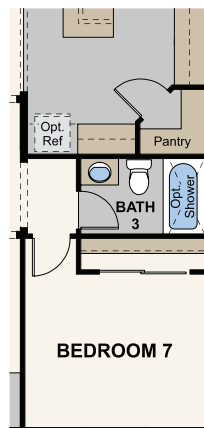
FIRST FLOOR



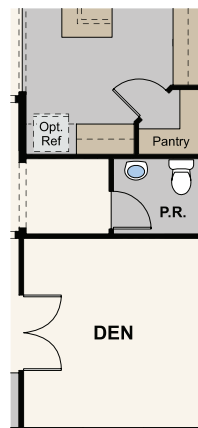
SECOND FLOOR



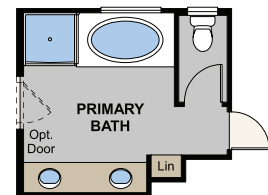
OPT. 3-BAY GARAGE



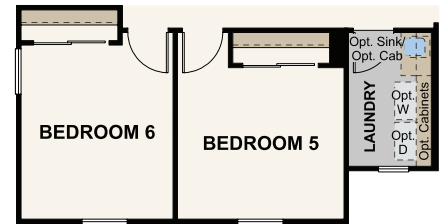
OPT. BEDROOM 7/BATH 3



OPT. DEN



OPT. TUB & SHOWER AT
PRIMARY BATH



OPT. BEDROOM 5 & 6



Prices, plans, and terms are effective on the date of publication and subject to change without notice. Square footage/acreage shown is only an estimate and actual square footage/acreage will differ. Buyer should rely on his or her own evaluation of usable area. Depictions of homes or other features are artist conceptions. Hardscape, landscape, and other items shown may be decorator suggestions that are not included in the purchase price and availability may vary. ©2022 Century Communities, Inc. Rev. 02/16/2022