

## THE CROSSINGS II

### AUBURN

APPROX. 2,528 SQ. FT. | 2-STORY | 3-5 BEDROOMS | 2.5-3 BATHROOMS | 2-3-BAY GARAGE



**ELEVATION A - SPANISH**



**ELEVATION B - BUNGALOW**



**ELEVATION C - COTTAGE**



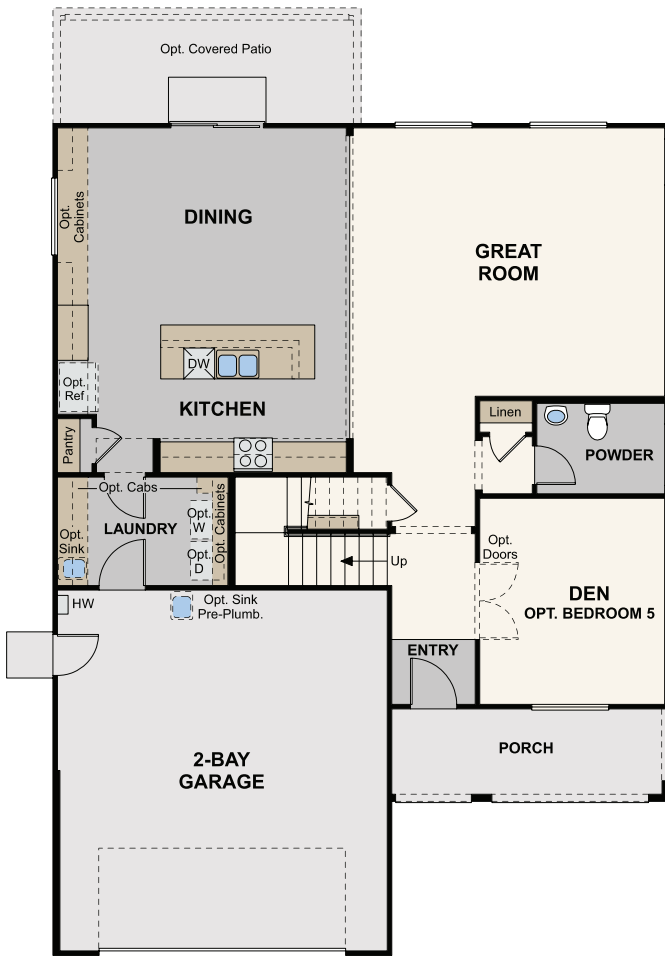
Prices, plans, and terms are effective on the date of publication and subject to change without notice. Square footage/acreage shown is only an estimate and actual square footage/acreage will differ. Buyer should rely on his or her own evaluation of usable area. Depictions of homes or other features are artist conceptions. Hardscape, landscape, and other items shown may be decorator suggestions that are not included in the purchase price and availability may vary. ©2022 Century Communities, Inc. Rev. 02/16/2022

# Floor Plans

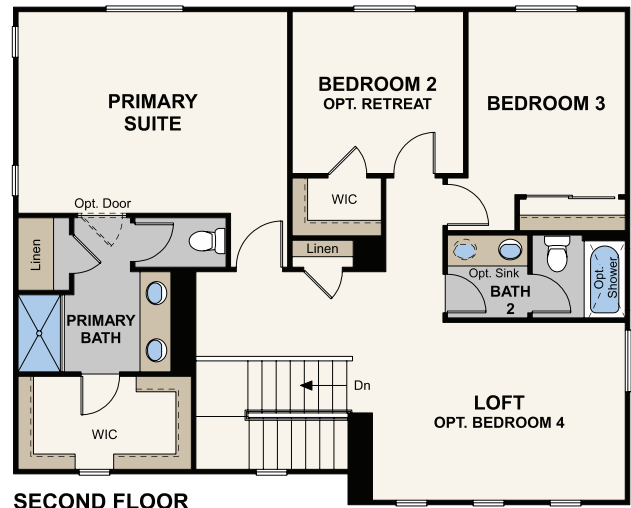


## AUBURN

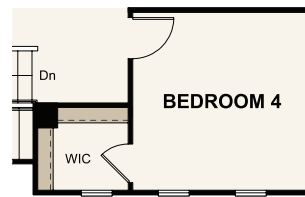
APPROX. 2,528 SQ. FT. | 2-STORY | 3-5 BEDROOMS | 2.5-3 BATHROOMS | 2-3-BAY GARAGE



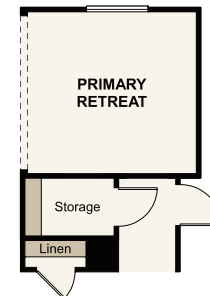
FIRST FLOOR



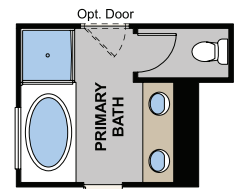
SECOND FLOOR



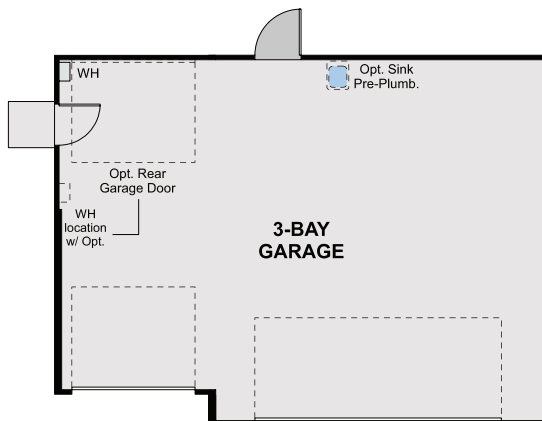
OPT. BEDROOM 4



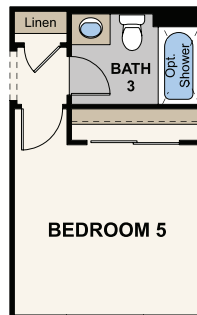
OPT. PRIMARY RETREAT



OPT. PRIMARY BATH TUB & SHOWER



OPT. 3-BAY GARAGE



OPT. BEDROOM 5/BATH 3



Prices, plans, and terms are effective on the date of publication and subject to change without notice. Square footage/acreage shown is only an estimate and actual square footage/acreage will differ. Buyer should rely on his or her own evaluation of usable area. Depictions of homes or other features are artist conceptions. Hardscape, landscape, and other items shown may be decorator suggestions that are not included in the purchase price and availability may vary. ©2022 Century Communities, Inc. Rev. 02/16/2022