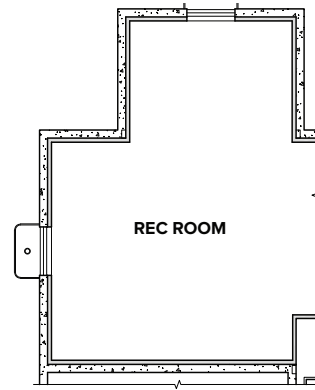
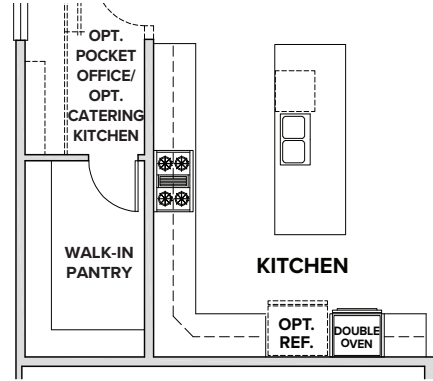


SKYLINE RIDGE AT CASTLE PINES - 60 series

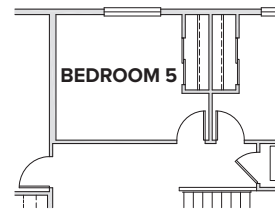
OPTIONS



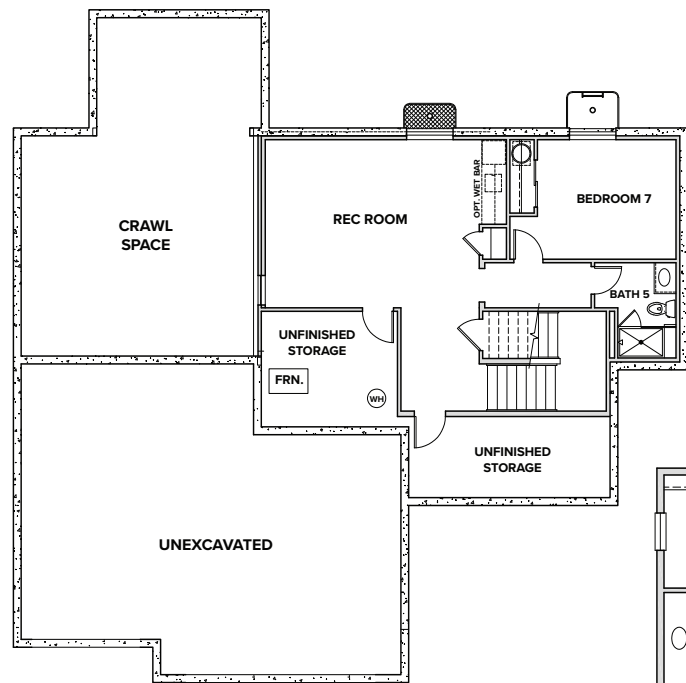
OPT. LARGER REC ROOM WITH
OPT. EXPANDED FINISHED BASEMENT



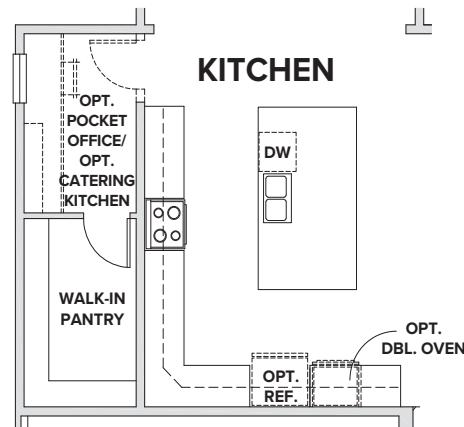
OPTIONAL CHEF'S KITCHEN



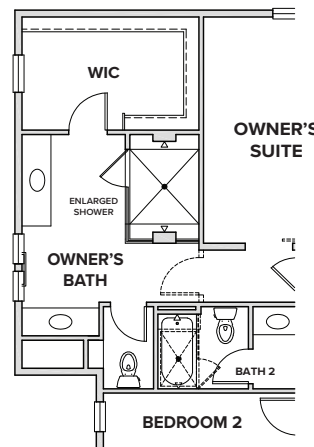
OPTIONAL
BEDROOM 5



OPTIONAL PARTIALLY
FINISHED BASEMENT

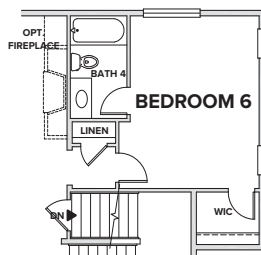


OPTIONAL
ENLARGED ISLAND



OPTIONAL
OWNER'S SPA BATH

OPTIONAL
BEDROOM 6 W/ BATH 4



SKYLINE RIDGE AT CASTLE PINES

THE RENOIR RESIDENCE 60252

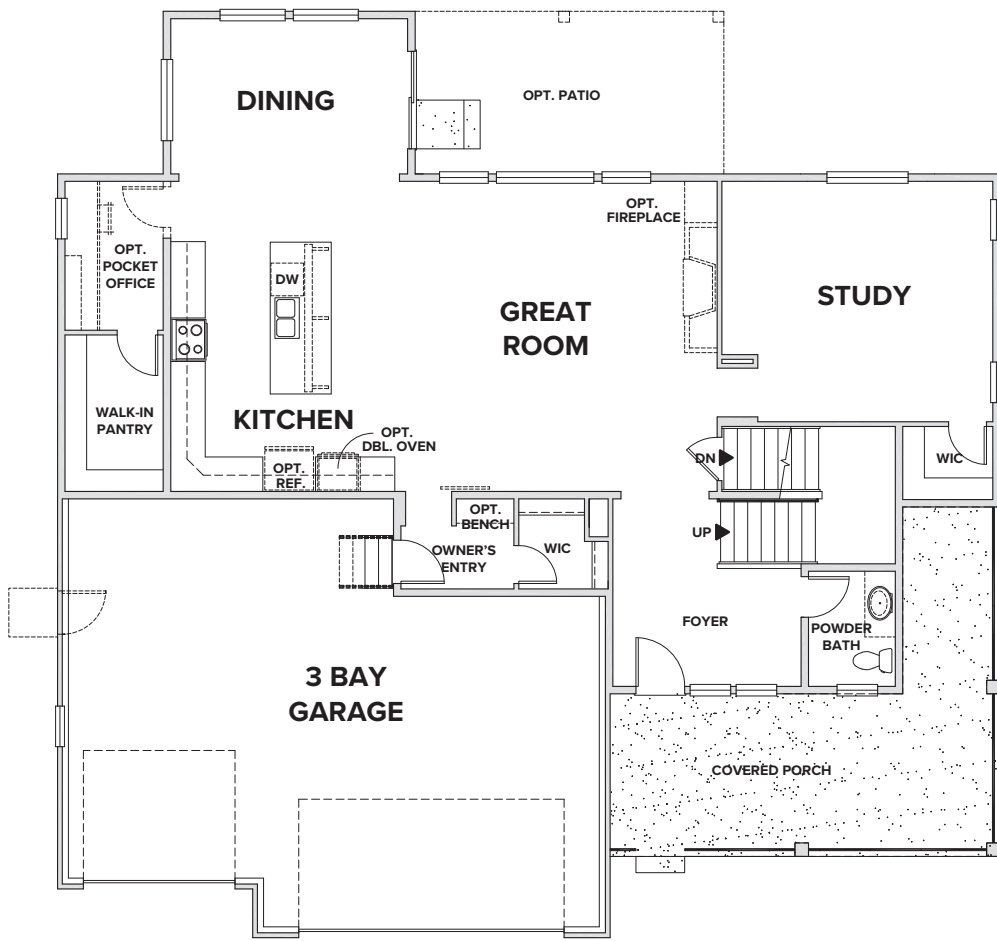
PRELIMINARY



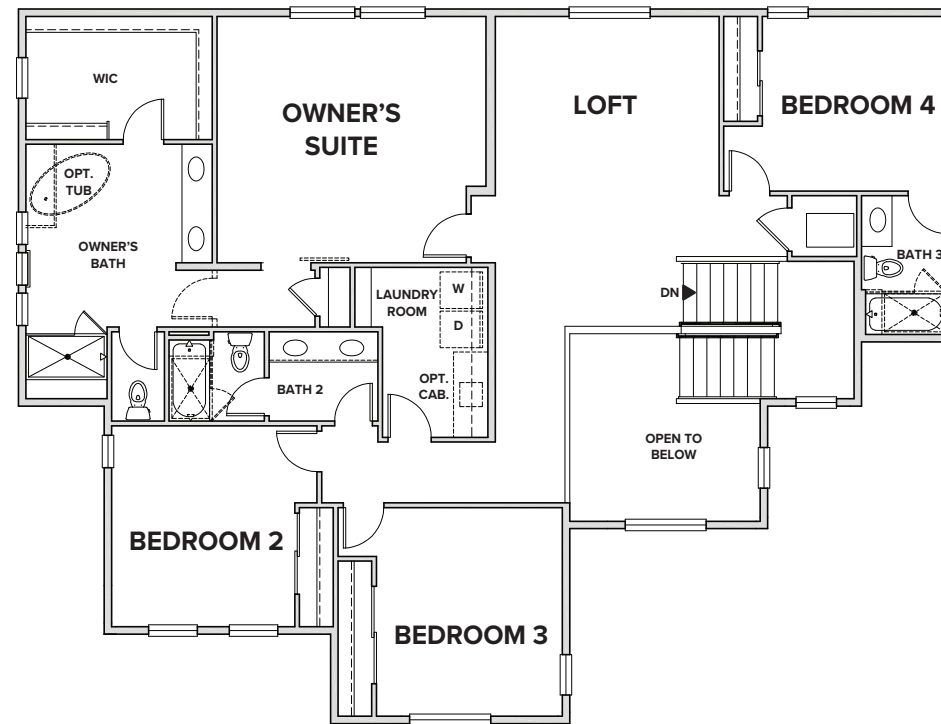
SKYLINE RIDGE AT CASTLE PINES

RENOIR

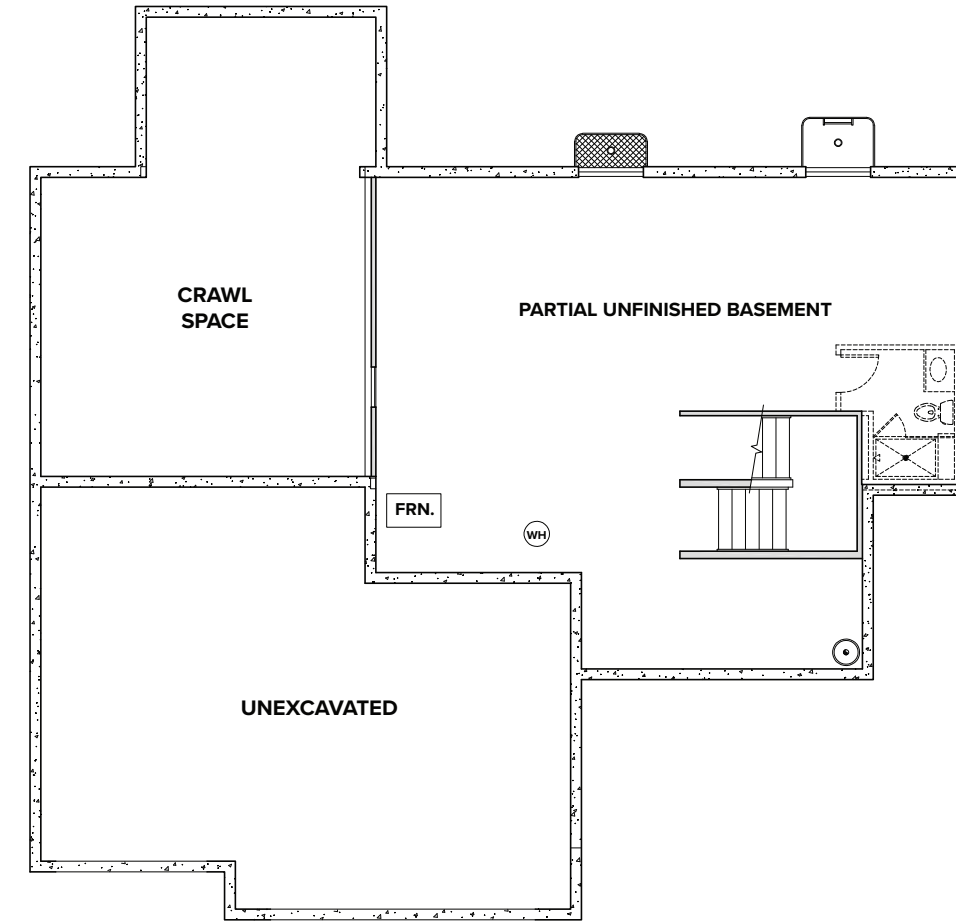
APPROX. 3,367 - 4,091 SQ. FT. | TWO-STORY
4 - 7 BEDROOMS | 3.5 - 5.5 BATHROOMS | 3 BAY GARAGE



MAIN FLOOR



SECOND FLOOR



PARTIAL UNFINISHED BASEMENT

PRELIMINARY



Seller reserves the right to make changes or modifications to plans, amenities, maps, plan specifications, materials, features, and colors without notice. Maps, plans, landscaping and elevation renderings are artist's conceptions, are not to scale, and may not accurately depict the homes or lots as they are built. These illustrations may depict options and features that are not standard on all models. Optional features may be included in the purchase, and if included, will vary according to size and location of the lot. Exterior treatments, square footages, window locations, and room configurations may vary with elevation. Model home interior decorating, options, landscaping, fencing, and other amenities are for display purposes only. All marketing material is for illustrative purposes only and not a part of a legal contract. Square footages are approximate. All prices, plans, standard features, specifications, options, availability and estimated delivery dates are subject to change without prior notice. Additional restrictions may apply. See a New Home Counsellor for further details. Depictions of homes or other features are conceptual. Decorative items and other items shown may be decorator suggestions that are not included in the purchase price and availability may vary. Persons in photos do not reflect racial preference and housing is open to all without regard to race, color, religion, sex, handicap, familial status, or national origin. ©03/2020 Century Communities.