

COMMUNITY FEATURES

- Gated community located in the city of North Las Vegas
- Close proximity to the 215 Beltway with convenient shopping, dining, retail and medical services
- Within ½ mile to Simmons Elementary School, 2.8 miles from Findlay Middle School and 2.5 miles from Mojave High School
- Close to Aliante Nature Discover Park and Craig Ranch Regional Park
- No SIDs or LIDs



centurycommunities.com



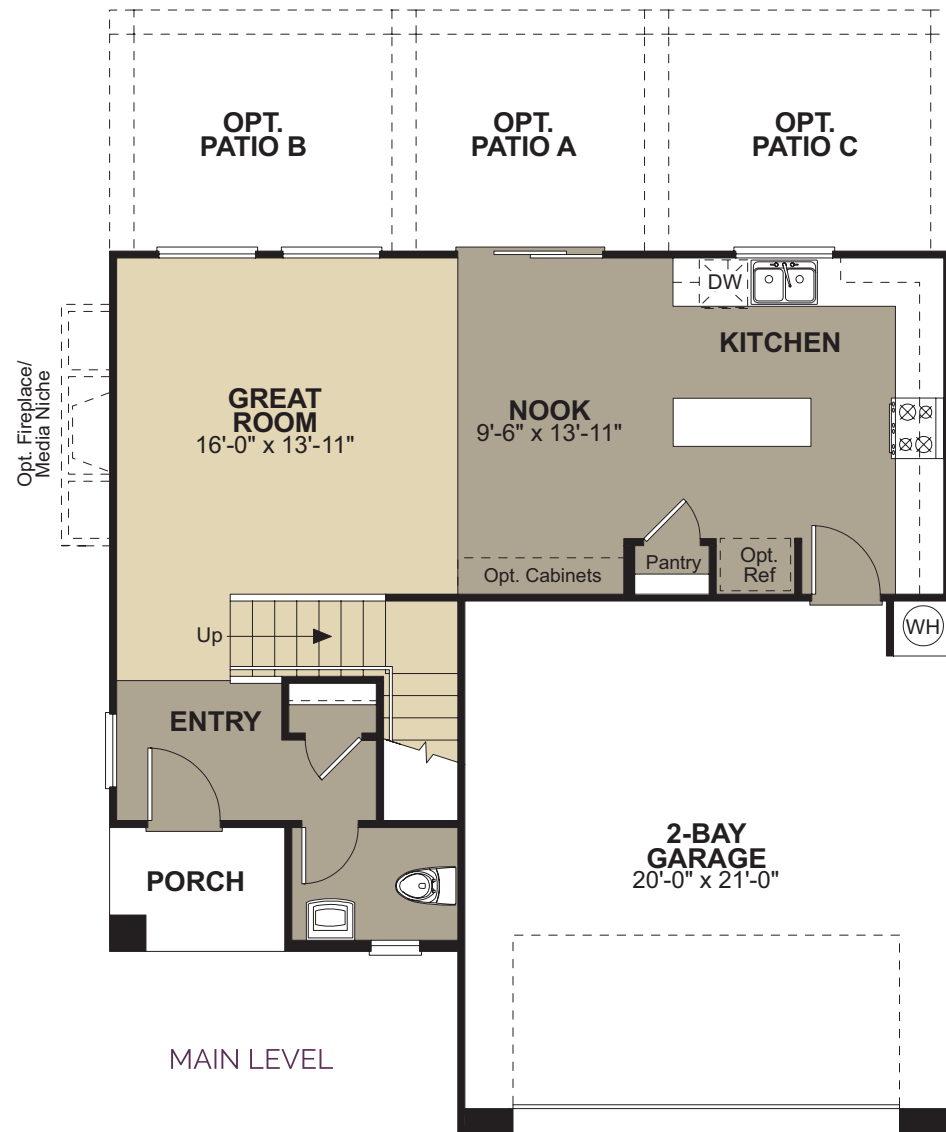
702.909.8133

Map is not to scale. Century Communities does not represent and cannot guarantee to potential buyers that the project will be serviced by any particular public school/school district or, once serviced by a particular school/school district, that the same school/school district will service the project for any particular period of time. Schools that your children are eligible to attend may change over time. You should independently confirm which schools and districts serve the project and learn more information about the school district's boundary change process prior to executing a purchase contract. ©2019 Century Communities.



COTTONWOOD

RESIDENCE 1603



ANDALUSIAN



ITALIANATE



TUSCAN

- TWO-STORY FLOORPLAN
- 1,603 SQUARE FEET
- 3 BEDROOMS
- 2.5 BATHROOMS
- GOURMET KITCHEN ISLAND
- OPTIONAL COVERED PATIO