

ALDER VILLAGE

INCLUDED FEATURES

REMARKABLE EXTERIORS

- 30 Year shingle roofing
- Fiber-cement siding with latex paint finish
- Stone accents per elevation
- 8' Front entry door
- Two bay garage, with drywall finish adjoining all living spaces, with solid fire rated entry door
- 8' Textured steel panel garage door with weather stripping and threshold
- Galvanized steel rain gutters with 5' downspout extensions (where applicable)
- Front yard landscaping and irrigation per plan
- Covered back patio per plan
- 5' Backyard privacy fencing per plan

IMPRESSIVE INTERIORS

- 2-panel interior doors with satin nickel hardware and lever handles
- Beautiful birch cabinetry throughout home
- Walls and ceilings in knock down finish
- Sherwin-Williams® paint
 - Walls & ceilings in low sheen finish
 - Baseboards & trim in semi-gloss finish
- Beautiful wood grain laminate flooring in entry and kitchen

- Vinyl flooring in laundry and secondary bathrooms
- In-unit laundry room for convenience
- Secondary bath(s)
 - Engineered marble countertop with undermount sink and adult height cabinet
 - 60" x 30" tub-shower, ceramic tile surround and single handle chrome faucet
- Dual port telephone/cable wiring in great room and owner's suite
- Pre-wiring for air conditioner
- 40 Gallon gas water heater

CONTEMPORARY KITCHENS

- Slab granite countertops with 4" backsplash
- Birch cabinetry with 42" upper cabinets
- Whirlpool® appliances including:
 - 30" smooth-top electric range and oven with window
 - 30" Microwave/hood with 2-speed fan and light
 - Large capacity dishwasher with 3 automatic cycles
- Double bowl undermount stainless steel sink
- Single handle chrome faucet with separate pull out sprayer
- 1/3 Horsepower disposal
- Pre-plumbing for water line to refrigerator

PRIVATE LUXURY OF YOUR OWNER'S SUITE

- Spacious walk-in closet
- Four piece owner's bath
 - Engineered marble countertop with dual undermount sinks in white finish, dual handle chrome lever faucet, and adult height cabinet
 - Walk-in shower with ceramic tile surround, solid shower base, chrome framed glass enclosure, and single handle chrome faucet
 - Water closet with elongated water-saver toilet in white finish
 - 17" x 17" Ceramic tile flooring

ENERGY EFFICIENCY

- 92% Efficient gas furnace with programmable thermostat
- Insulation and weather stripping
- White vinyl dual-pane windows with Low-E glass, in glass grids per plan, included screens and window sills



ALDER VILLAGE

GRANBY

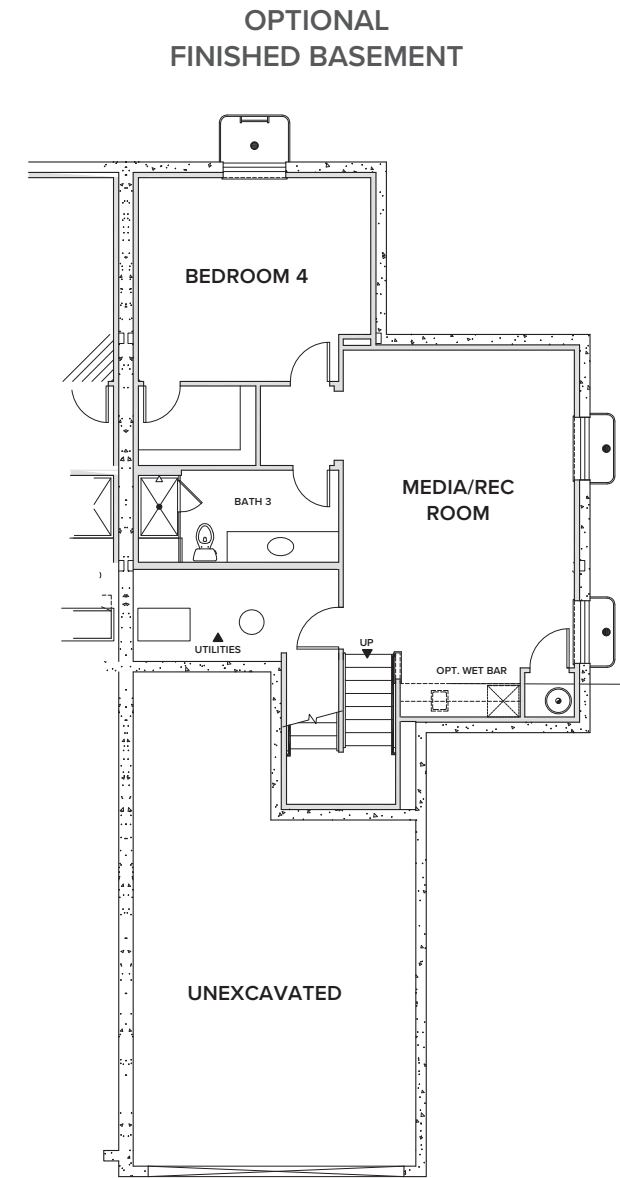
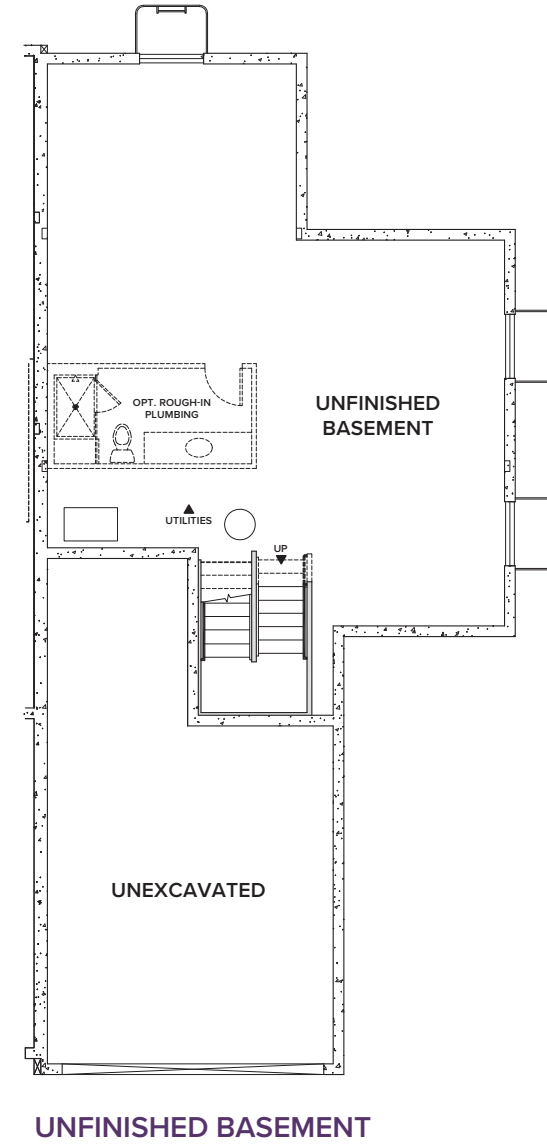
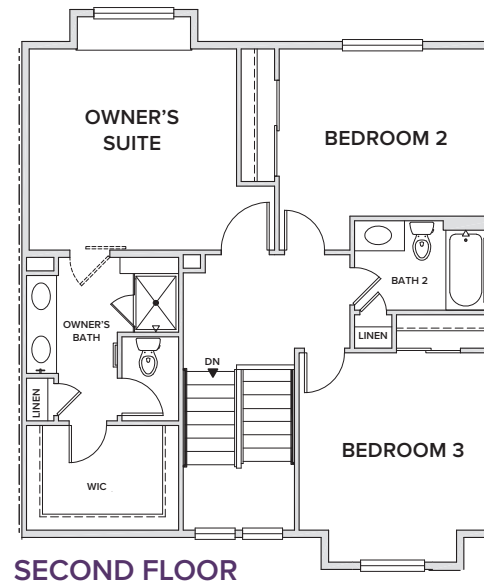
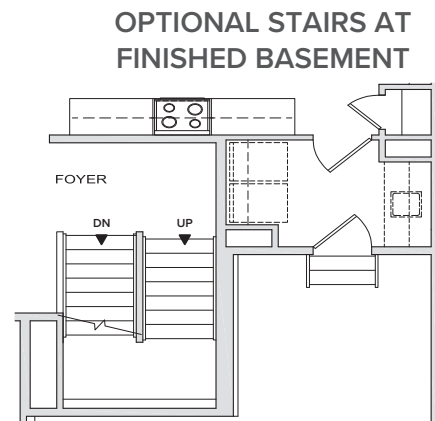
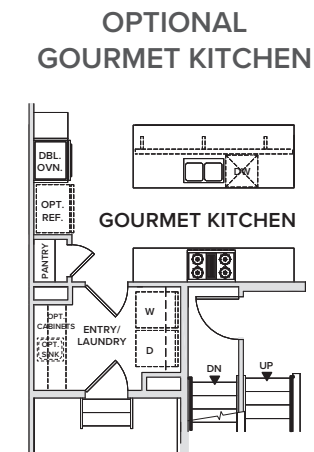
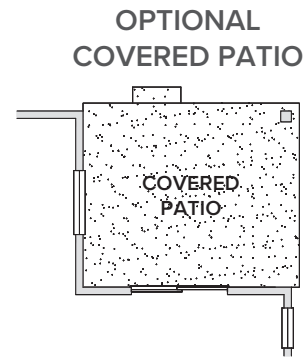
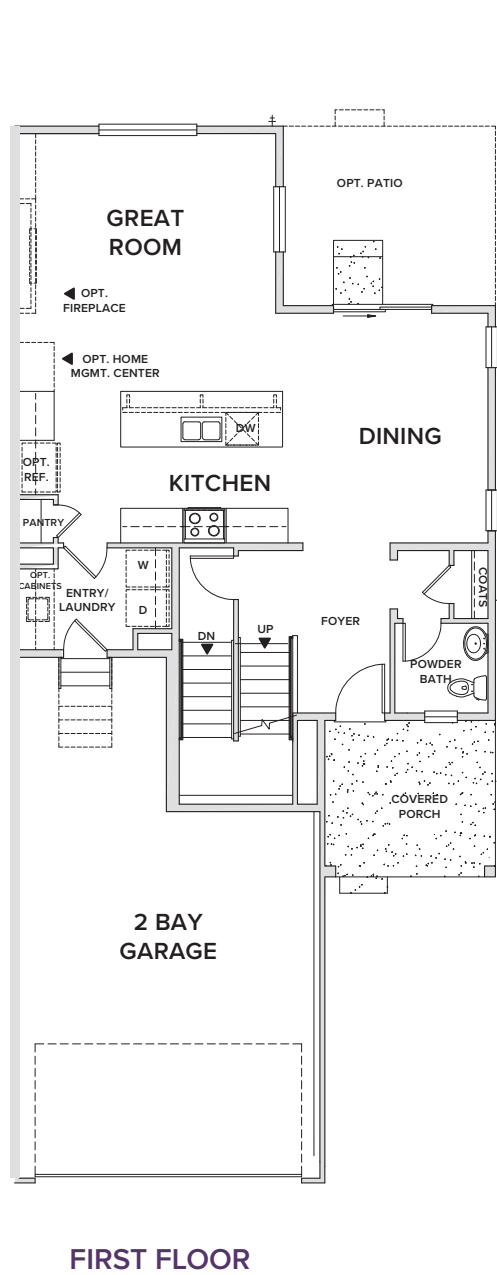


ALDER VILLAGE

GRANBY

APPROX. 2,017 - 2,729 SQ. FT. | PAIRED TWO-STORY

3 - 4 BEDROOMS | 2.5 - 3.5 BATHROOMS | EXTENDED 2 BAY GARAGE



PRELIMINARY



Seller reserves the right to make changes or modifications to plans, amenities, maps, plan specifications, materials, features, and colors without notice. Maps, plans, landscaping and elevation renderings are artist's conceptions, are not to scale, and may not accurately depict the homes or lots as they are built. These illustrations may depict options and features that are not standard on all models. Optional features may be included in the purchase, and if included, will vary according to size and location of the lot. Exterior treatments, square footages, window locations, and room configurations may vary with elevation. Model home interior decorating, options, landscaping, fencing, and other amenities are for display purposes only. All marketing material is for illustrative purposes only and not a part of a legal contract. Square footages are approximate. All prices, plans, standard features, specifications, options, availability and estimated delivery dates are subject to change without prior notice. Additional restrictions may apply. See a New Home Counsellor for further details. Depictions of homes or other features are conceptual. Decorative items and other items shown may be decorator suggestions that are not included in the purchase price and availability may vary. Persons in photos do not reflect racial preference and housing is open to all without regard to race, color, religion, sex, handicap, familial status, or national origin. ©01/2020 Century Communities.