

THE PALMS AT CASA VISTA

RESIDENCE 1971

APPROX. 1,971 SQ. FT. | 1-STORY | 3-4 BEDROOMS | 2 BATHROOMS | 2-3 BAY GARAGE/OPT. SUPER GARAGE



ELEVATION A



ELEVATION A - W/ 3RD BAY OPTION



ELEVATION B

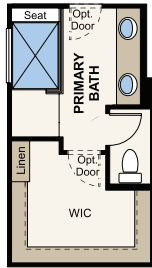


ELEVATION C

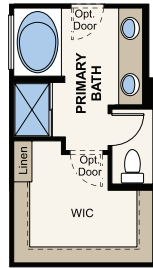


Prices, plans, and terms are effective on the date of publication and subject to change without notice. Square footage/acreage shown is only an estimate and actual square footage/acreage will differ. Buyer should rely on his or her own evaluation of usable area. Depictions of homes or other features are artist conceptions. Hardscape, landscape, and other items shown may be decorator suggestions that are not included in the purchase price and availability may vary. ©2020 Century Communities, Inc. Rev. 08/06/2021

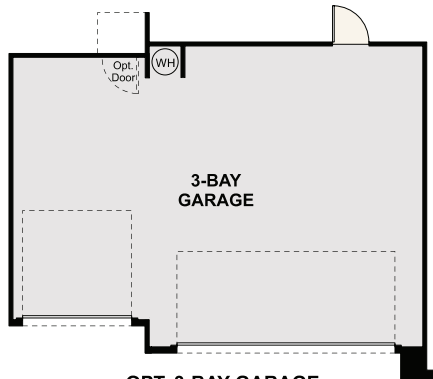
Floor Plans



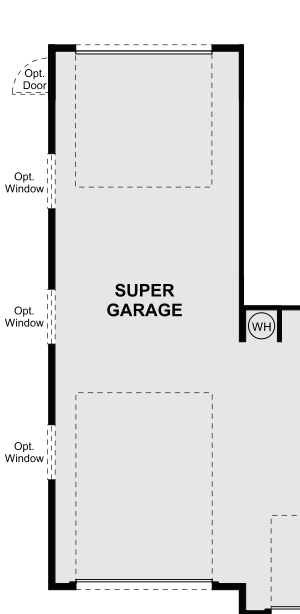
**OPT. PRIMARY
BATH SHOWER**



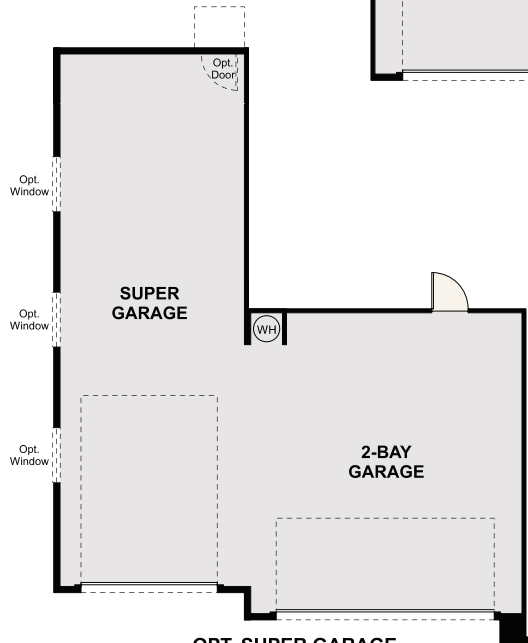
**OPT. PRIMARY
BATH TUB &
SHOWER**



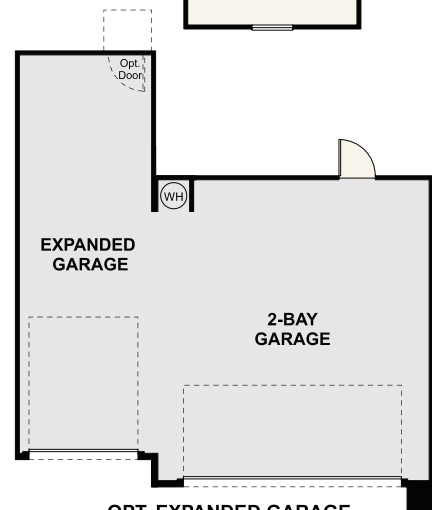
OPT. 3-BAY GARAGE



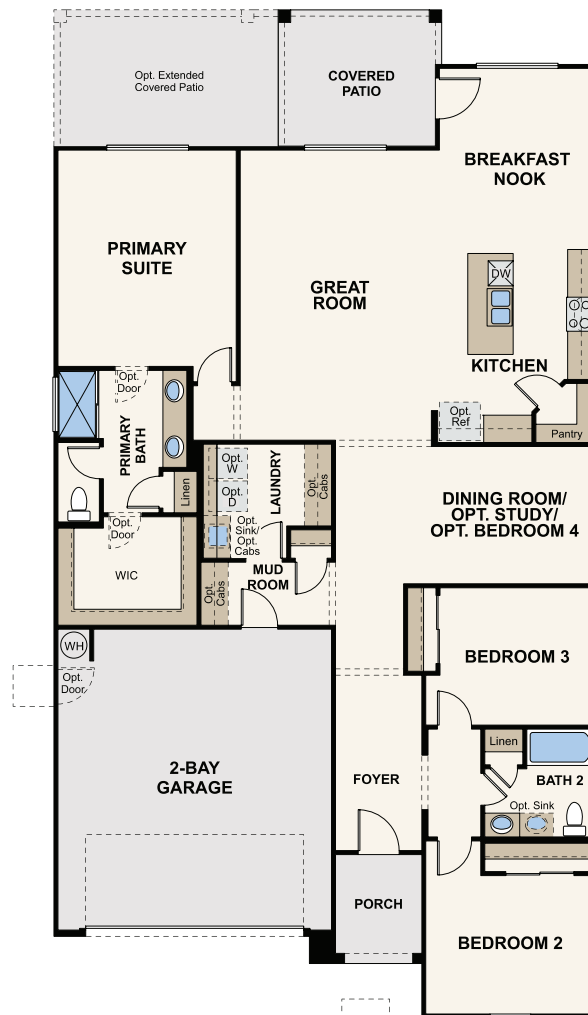
**OPT. SUPER GARAGE
W/ REAR GARAGE DOOR**



OPT. SUPER GARAGE



OPT. EXPANDED GARAGE



OPT. STUDY



OPT. BEDROOM 4

FLOOR PLAN



Prices, plans, and terms are effective on the date of publication and subject to change without notice. Square footage/acreage shown is only an estimate and actual square footage/acreage will differ. Buyer should rely on his or her own evaluation of usable area. Depictions of homes or other features are artist conceptions. Hardscape, landscape, and other items shown may be decorator suggestions that are not included in the purchase price and availability may vary. ©2020 Century Communities, Inc. Rev. 08/06/2021