

# ENCLAVE AT MISSION FALLS THE ALPINE COLLECTION

## THE LOMBARD

2,172 SQ. FT. | TWO-STORY SINGLE-FAMILY HOME | 3 BEDROOMS | 3.5 BATHROOMS | 2 BAY GARAGE



**ELEVATION A - RANCH**



**ELEVATION B - TUSCAN**

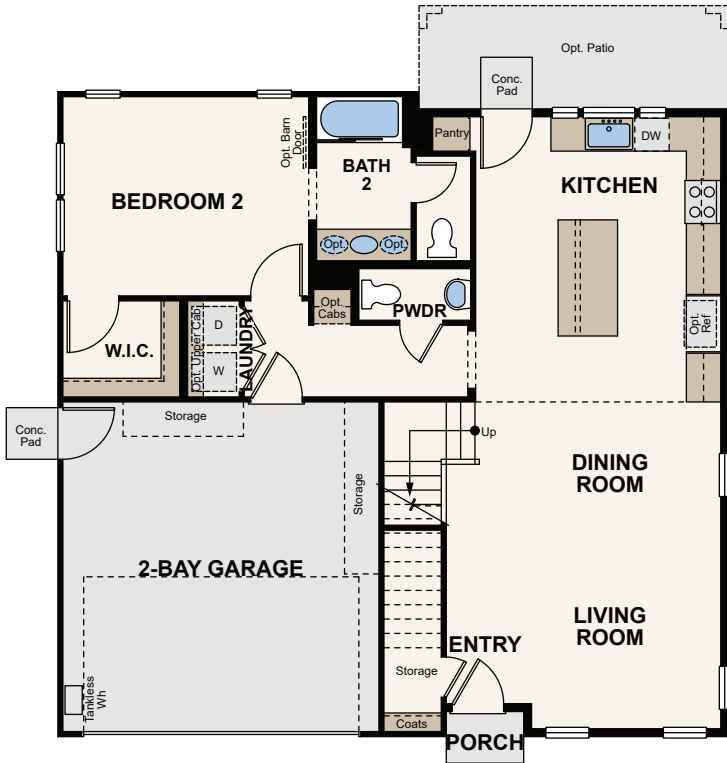


**ELEVATION C - TRADITIONAL**

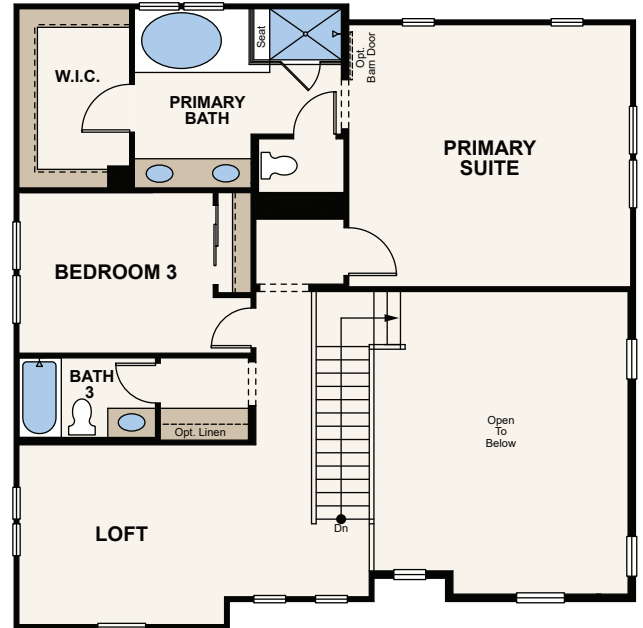


Price, plans and terms are effective on the date of publication and subject to change without notice. Depictions of homes or other features are conceptual. Decorative items and other items shown may be decorator suggestions that are not included in the purchase price and availability may vary. Persons in photos do not reflect racial preference and housing is open to all without regard to race, color, religion, sex, handicap, familial status, or national origin. ©2021 Century Communities.

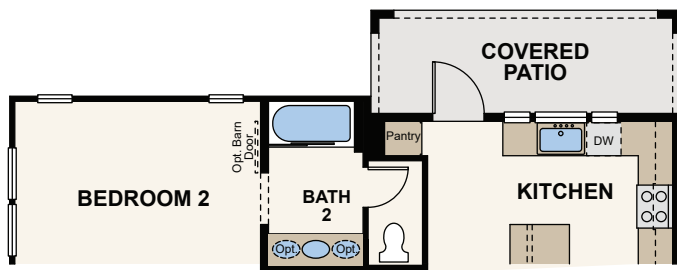
# Floor Plans



FIRST FLOOR



SECOND FLOOR



OPT. COVERED PATIO



Price, plans and terms are effective on the date of publication and subject to change without notice. Depictions of homes or other features are conceptual. Decorative items and other items shown may be decorator suggestions that are not included in the purchase price and availability may vary. Persons in photos do not reflect racial preference and housing is open to all without regard to race, color, religion, sex, handicap, familial status, or national origin. ©2021 Century Communities.

# INCLUDED FEATURES



## ENCLAVE AT MISSION FALLS

### ALPINE COLLECTION

#### DISTINGUISHED EXTERIORS

- Detailed architectural styling with stucco and/or siding (per elevation)
- Architecturally selected exterior color palettes
- Beautifully landscaped front yards
- Side yard access gate
- Eagle® concrete tile roofing
- Spacious 2-bay garages
- Optional covered back patios

#### INVITING INTERIORS

- Spacious interiors with great rooms, lofts, and luxurious primary suites
- 5-1/2" baseboards throughout
- 10' ceilings on first floor with 9' ceilings on second floor
- LED lighting throughout
- Wall to wall Shaw® carpeting with 1/2" – 6-pound pad (select areas)
- Interior laundry with optional built-in cabinetry (per plan)
- Pre-wired for ceiling fan light with light kit in the primary suite

#### EASY-CARE BATHS

- Chrome Moen® plumbing fixtures and faucets including self-rimming sinks
- Solid surface Cultured Marble White Matte countertops with 4" backsplash
- Fiberglass tub at secondary bath with Cultured Marble White Matte walls
- Designer-selected handset 18" x 18" tile flooring (select areas)

#### GOURMET KITCHENS

- Custom wood cabinetry with European-style concealed hinges and doors
- Gourmet granite slab countertop with 6" backsplash
- Chrome Moen® faucet with single handle pull-out sprayer
- Whirlpool® appliance package including 36" cooktop with built-in hood above, separate oven, dishwasher, microwave, and washer & dryer
- Designer-selected handset 18" x 18" tile flooring (select areas)
- Spacious islands with room for seating (per plan)
- USB charging port installed for everyday electronics



Owned and offered for sale by BMC Realty Advisors, Inc. CA Broker License #01920450. Price, plans and terms are effective on the date of publication and subject to change without notice. Depictions of homes or other features are conceptual. Decorative items and other items shown may be decorator suggestions that are not included in the purchase price and availability may vary. Persons in photos do not reflect racial preference and housing is open to all without regard to race, color, religion, sex, handicap, familial status, or national origin. ©2021 Century Communities.

# INCLUDED FEATURES



## ENCLAVE AT MISSION FALLS

### THE ALPINE COLLECTION

#### PRIMARY SUITES

- Elegantly designed primary suites with separate bathrooms and spacious walk-in closets
- Dual vanities with solid surface Cultured Marble White Matte slab with 4" backsplash
- Moen® chrome plumbing fixtures and faucets including self-rimming sinks
- Cultured Marble White Matte slab on tub deck and shower surrounds
- Separate water closet

#### QUALITY GREEN-BUILT ENERGY FEATURES

- Energy-efficient Low-E dual-paned vinyl windows
- Fire sprinkler system
- Smoke detectors with battery backup and carbon monoxide detectors
- Energy Star® rated appliances
- Drip irrigation system
- Tankless Rinnai® gas water heaters
- Solar Panels (with the option to purchase or lease)



Owned and offered for sale by BMC Realty Advisors, Inc. CA Broker License #01920450. Price, plans and terms are effective on the date of publication and subject to change without notice. Depictions of homes or other features are conceptual. Decorative items and other items shown may be decorator suggestions that are not included in the purchase price and availability may vary. Persons in photos do not reflect racial preference and housing is open to all without regard to race, color, religion, sex, handicap, familial status, or national origin. ©2021 Century Communities.