

# COAL CREEK COMMONS

## PLAN 604

APPROX. 1,460 SQ. FT. | TWO-STORY HOME | 2-3 BEDROOMS | 2.5 BATHROOMS | 2-BAY GARAGE



**6 PLEX - CRAFTSMAN**



**4 PLEX - FARMHOUSE**

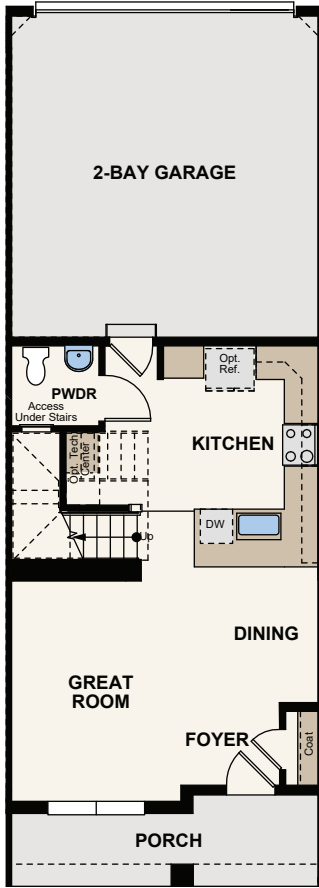


**5 PLEX - RANCH CRAFTSMAN**

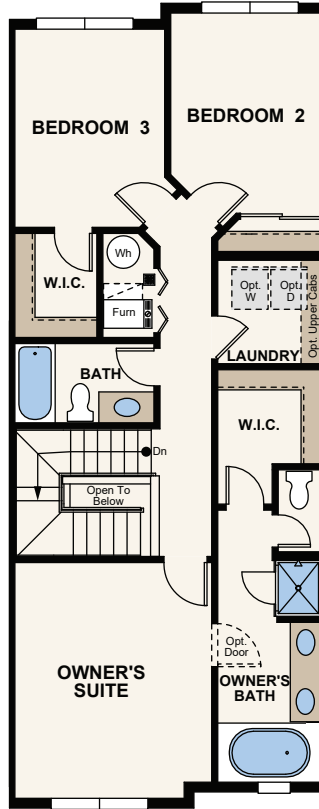


Price, plans and terms are effective on the date of publication and subject to change without notice. Depictions of homes or other features are conceptual. Decorative items and other items shown may be decorator suggestions that are not included in the purchase price and availability may vary. Persons in photos do not reflect racial preference and housing is open to all without regard to race, color, religion, sex, handicap, familial status, or national origin. ©2020 Century Communities.

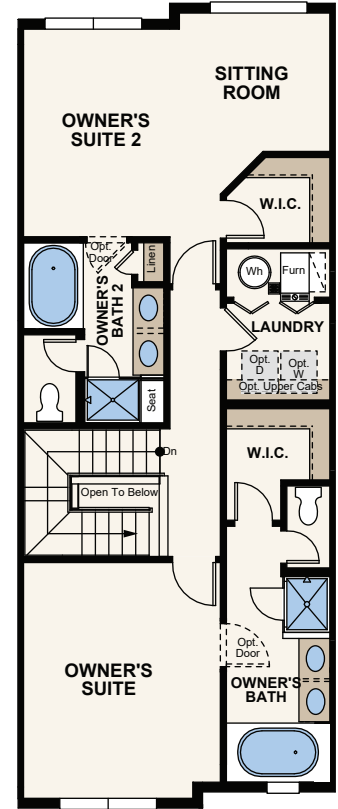
# Floor Plans



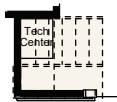
FIRST FLOOR



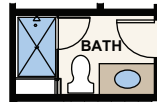
SECOND FLOOR



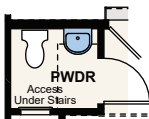
SECOND FLOOR  
OPTIONAL DUAL MASTERS



OPT. TECH CENTER



OPT. SHOWER WITH BENCH  
IN BATHROOM



OPT. ENLARGED POWDER ROOM



Price, plans and terms are effective on the date of publication and subject to change without notice. Depictions of homes or other features are conceptual. Decorative items and other items shown may be decorator suggestions that are not included in the purchase price and availability may vary. Persons in photos do not reflect racial preference and housing is open to all without regard to race, color, religion, sex, handicap, familial status, or national origin. ©2020 Century Communities.