

# MAYFIELD

# INCLUDED FEATURES

## LONG LASTING EXTERIORS

- 30 year shingle roofing
- Sustainable, weather resistant fiber-cement siding with durable latex paint finish
- Stone or brick accents (per elevation)
- Two-bay garage, with drywall finish adjoining all living spaces, with solid fire rated entry door
- 8' Fiberglass garage door with weather stripping and threshold
- 8' **Therma-Tru®** front entry door
- 5" galvanized steel rain gutters with 5' downspout extensions (where applicable)
- Front yard landscaping with front yard irrigation
- 6' Privacy wing fencing in front with single gate

## IMPRESSIVE INTERIORS

- 2-panel interior and closet doors with satin-nickle hardware and lever handles
- Beautiful birch cabinetry throughout home
- Walls and ceilings in knock down finish
- **Sherwin-Williams®** paint
  - Walls & ceilings in low sheen finish
  - Baseboards & trim in semi-gloss finish
- Beautiful laminate wood flooring in entry, kitchen, and nook

- Resilient vinyl flooring in laundry and bathrooms
- Secondary baths with tub-shower, 6 x 6" ceramic tile surround and single handle chrome faucet
- Stylish white **Decora®** light switches and outlet covers (per plan)
- White, water-saver toilets
- Dual port telephone/cable wiring in choice of great room, owner's suite, loft, or study
- Single port telephone wiring
- Air conditioning pre-wire
- Rough-in plumbing in basement

## CONTEMPORARY KITCHENS

- Slab granite countertops with 4" backsplash
- Birch cabinetry with 42" upper cabinets
- **Whirlpool®** appliances including:
  - 30" gas range and oven with window
  - 30" Microwave/hood with 2-speed venting and light
  - Large capacity dishwasher with 3 automatic cycles
- Double compartment undermount stainless steel sink
- Single handle chrome faucet with separate sprayer
- 1/3 horsepower disposal
- Ice maker line to refrigerator

## PRIVATE LUXURY OF PRIMARY SUITES

- Spacious walk-in closet off of four piece owner's bath
- Dual sinks in porcelain-on-steel white finish with dual handle chrome lever faucet
- Walk-in shower with 6 x 6" ceramic tile, solid shower base, and single handle chrome faucet in chrome finish
- Water closet with elongated water-saver toilet in white finish

## WHOLE-HOUSE ENERGY SAVINGS

- Central heating; 92% efficient gas furnace with programmable thermostat to maintain year-round comfort and reduce utility bills
- 50 Gallon gas water heater for efficiency and lower energy cost
- Insulation and weather stripping
- White vinyl dual-pane windows with included screens, and Low-E glass to help retain warmth in winter and cool air in summer



# MAYFIELD

# THE BRONTE RESIDENCE 40224



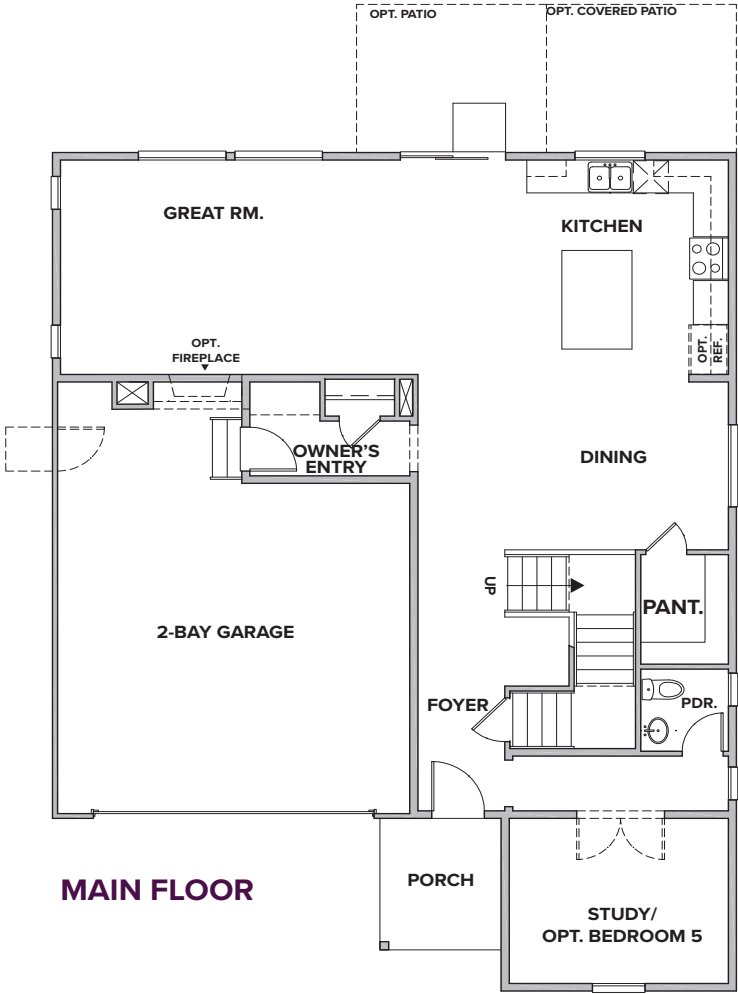


MAYFIELD

THE BRONTE

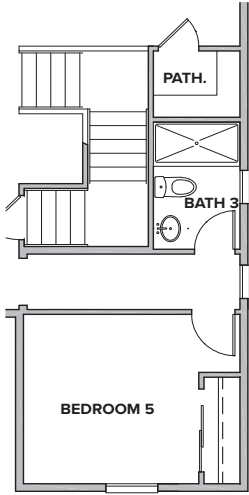
APPROX. 2,534 - 3,438 SQ. FT. | TWO-STORY

4 - 6 BEDROOMS | 2.5 - 5 BATHROOMS | 2 BAY GARAGE

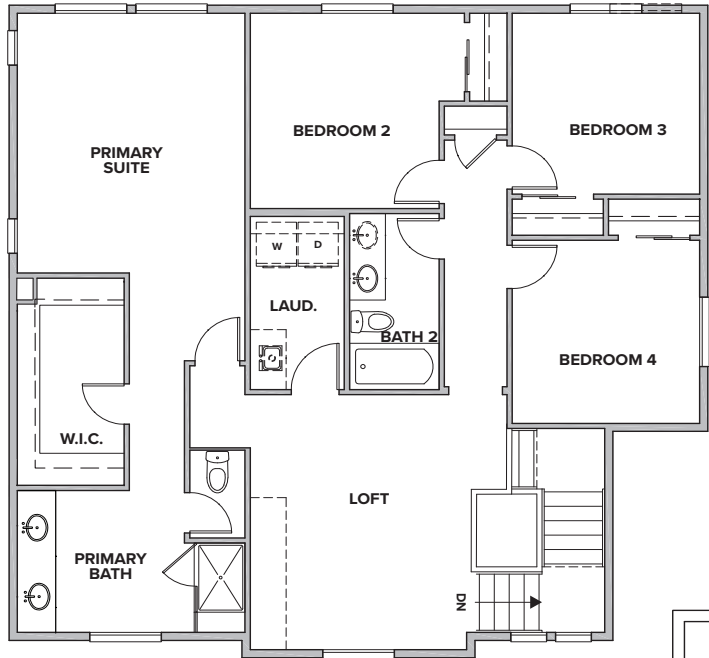
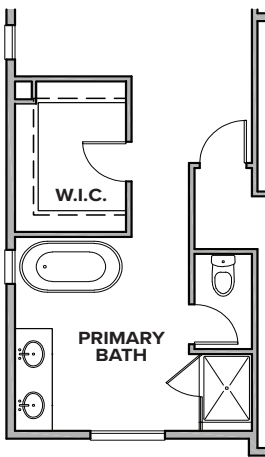


MAIN FLOOR

BEDROOM 5

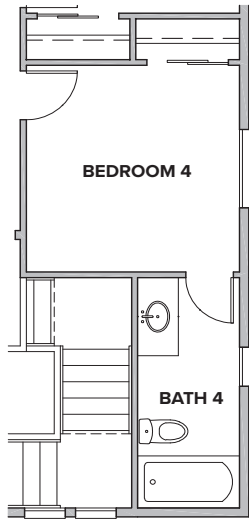


OPTIONAL 5 PIECE BATH

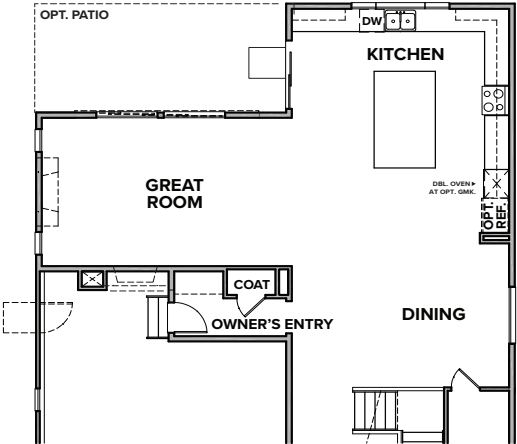


SECOND FLOOR

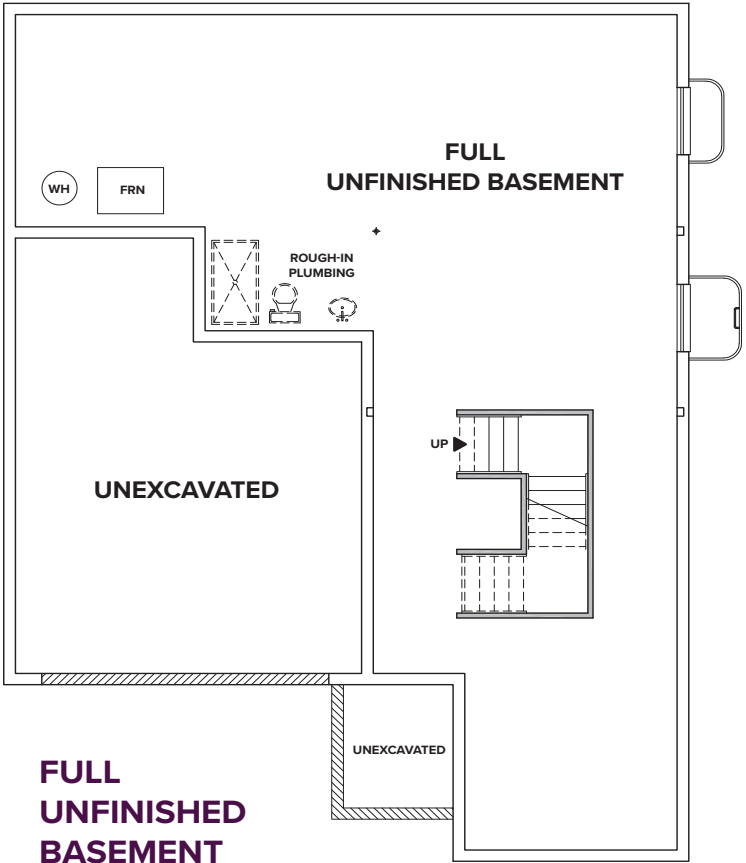
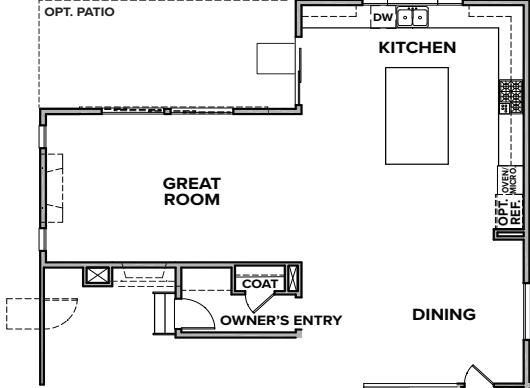
OPTIONAL BATH 4



OPTIONAL EXT. KITCHEN



OPTIONAL CHEF'S KITCHEN



FULL UNFINISHED BASEMENT

PRELIMINARY