

TANGLEWOOD

INCLUDED FEATURES

REMARKABLE EXTERIORS

- 30 year shingle roofing
- Galvanized steel rain gutters with 5' downspout extensions (where applicable)
- Weather resistant fiber-cement siding with brick, stone, or stucco accents per plan
- 3 Bay garage, with drywall finish adjoining all living spaces, and solid fire rated entry door
- 8' insulated, raised panel garage door
- 8' Fiberglass entry door
- Front yard landscaping with sprinkler system
- 6' Privacy wing fencing, with single gate entry

IMPRESSIVE INTERIORS

- 2-panel interior doors with lever handles in satin nickel finish
- Beautiful birch cabinetry throughout home
- Walls and ceilings in knock down finish
- **Sherwin-Williams**® paint
- 9' Ceilings on main and upper level of two-story homes
- 10' Ceilings on main level of ranch homes
- Laminate flooring in entry, kitchen, and nook

- Resilient vinyl flooring in bathrooms, and laundry
- Laundry room located convenient to bedrooms
- Venetian marble countertops in baths and laundry
- Secondary baths with tub-shower, 6 x 6" ceramic tile surround and single handle chrome faucet
- Dual port telephone/cable wiring in great room and owner's suite
- Single port telephone wiring in kitchen

CONTEMPORARY KITCHENS

- Granite countertops with 4" granite backsplash
- Birch cabinetry with 42" uppers
- **Whirlpool**® Stainless Steel Appliances:
 - 30" smooth-top electric range and oven
 - Microwave hood with light
 - Large capacity dishwasher
- Stainless steel double compartment undermount sink
- Single handle chrome faucet with pull out sprayer
- 1/3 horsepower disposal
- Ice maker line to refrigerator

PRIVATE LUXURY OF OWNER'S SUITES

- Owner's suite strategically located for privacy
- Spacious walk-in closet off owner's bath
- 13 x 13" Ceramic tile flooring in owner's bath
- Shower with 6 x 6" ceramic tile, solid shower base, and single handle chrome faucet
- Dual porcelain-on-steel sinks in white with two handle chrome faucet
- Water closet with **Kohler**® elongated water-saver toilet in white finish

ENERGY EFFICIENCY

- Energy efficient gas furnace with **Honeywell**® thermostat
- 40 Gallon gas water heater
- Insulation and weather stripping
- White vinyl dual-pane windows with included screens, and Low-E glass
- Solar prepared



TANGLEWOOD

THE OXFORD RESIDENCE 50260

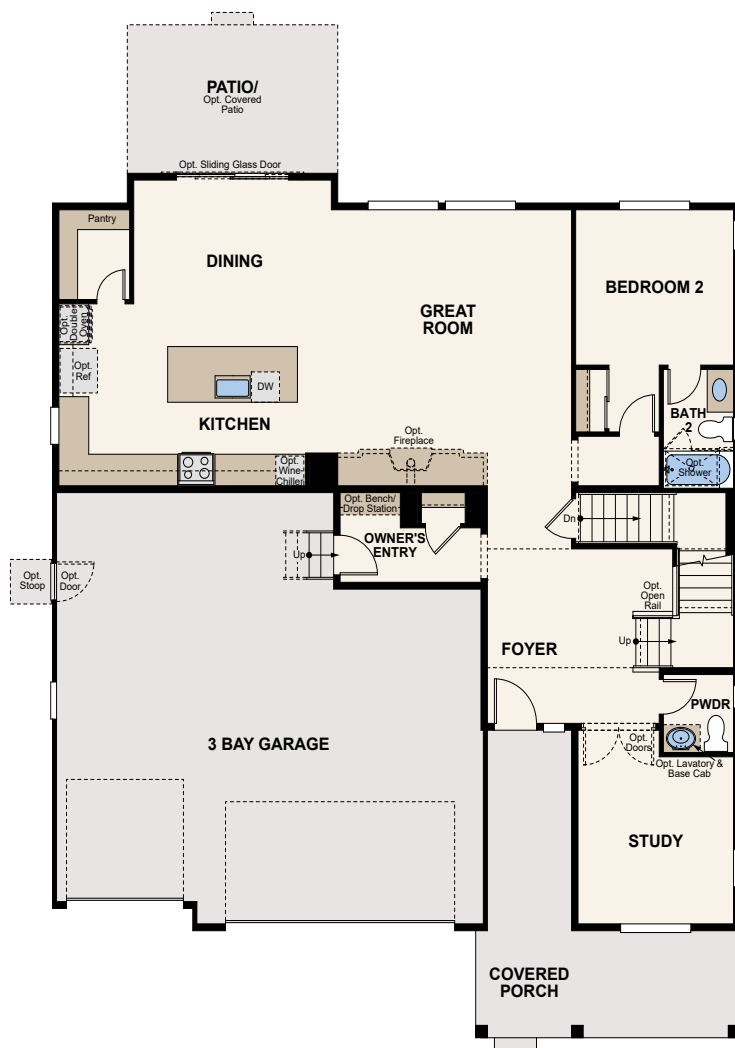


TANGLEWOOD



THE OXFORD

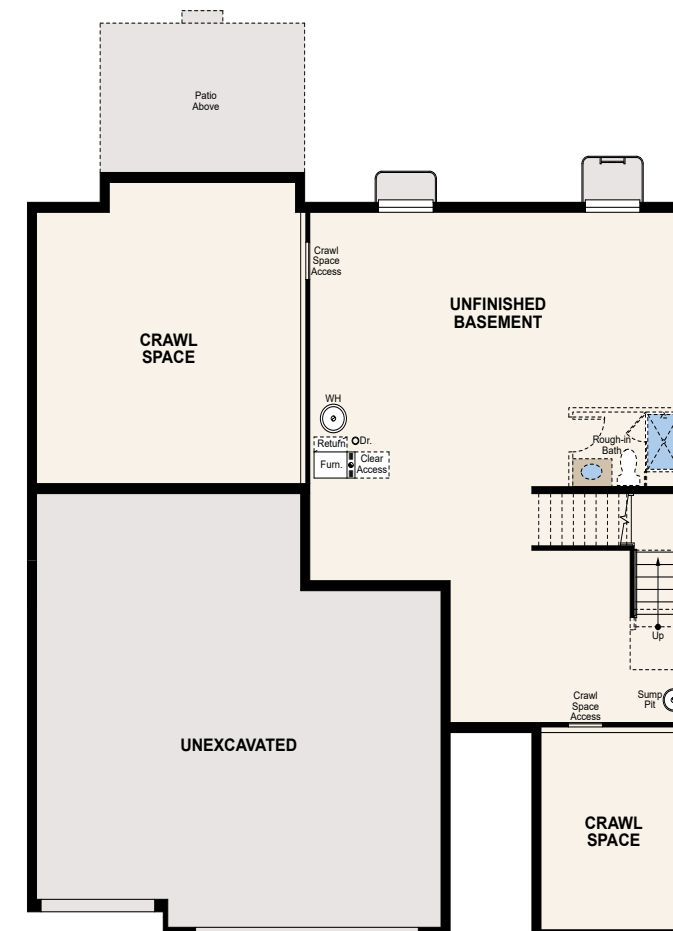
APPROX. 3,167 SQ. FT. | TWO-STORY
5-6 BEDROOMS | 3.5-4.5 BATHROOMS | 3-BAY GARAGE



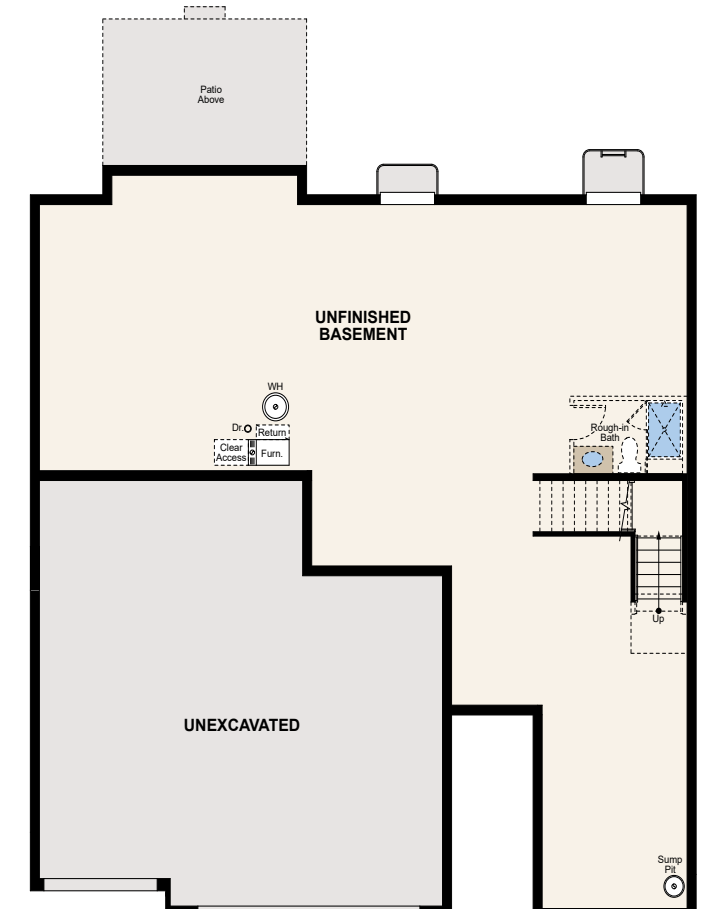
FIRST FLOOR



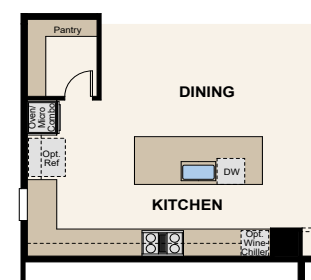
SECOND FLOOR



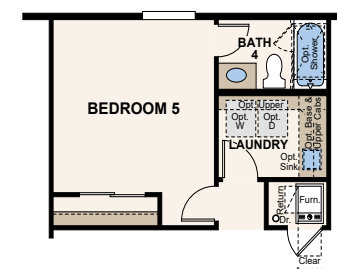
PARTIAL UNFINISHED BASEMENT



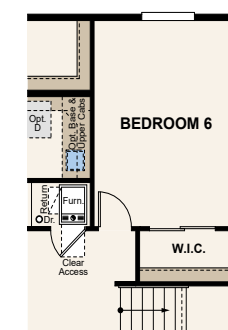
OPT. FULL UNFINISHED BASEMENT



OPT. CHEF'S KITCHEN



OPT. BEDROOM 5 / BATH 4



OPT. BEDROOM 6

PRELIMINARY



Seller reserves the right to make changes or modifications to plans, amenities, maps, plan specifications, materials, features, and colors without notice. Maps, plans, landscaping and elevation renderings are artist's conceptions, are not to scale, and may not accurately depict the homes or lots as they are built. These illustrations may depict options and features that are not standard on all models. Optional features may be included in the purchase, and if included, will vary according to size and location of the lot. Exterior treatments, square footages, window locations, and room configurations may vary with elevation. Model home interior decorating, options, landscaping, fencing, and other amenities are for display purposes only. All marketing material is for illustrative purposes only and not a part of a legal contract. Square footages are approximate. All prices, plans, standard features, specifications, options, availability and estimated delivery dates are subject to change without prior notice. Additional restrictions may apply. See a New Home Counsellor for further details. Depictions of homes or other features are conceptual. Decorative items and other items shown may be decorator suggestions that are not included in the purchase price and availability may vary. Persons in photos do not reflect racial preference and housing is open to all without regard to race, color, religion, sex, handicap, familial status, or national origin. ©05/2020 Century Communities.