

# COYOTE CREEK

## INCLUDED FEATURES

### REMARKABLE EXTERIORS

- 30 year shingle roofing
- Galvanized steel rain gutters with 5' downspout extensions (where applicable)
- Weather resistant fiber-cement siding with latex paint finish
- Two-car garage, with drywall finish adjoining all living spaces, and solid fire rated entry door
- 7' insulated panel garage doors
- Front yard landscaping with sprinkler system

### IMPRESSIVE INTERIORS

- 2-panel interior and closet doors with chrome hardware
- Beautiful birch cabinetry throughout home
- Stained hand rails in coordinating finish
- Walls and ceilings in knock down finish
- **Sherwin-Williams®** paint
  - Walls & ceilings in low-sheen finish
  - Baseboards & trim in semi-gloss finish
- Resilient vinyl flooring in entry, bathrooms, laundry and kitchen
- Laundry room located convenient to bedrooms
- Secondary baths with 60 x 30"

tub-shower, 6 x 6" ceramic tile surround and single handle chrome faucet

- Convenient dual port telephone/cable wiring in great room and owner's suite
- Single port telephone wiring in kitchen
- Air conditioning pre-wire

### CONTEMPORARY KITCHENS

- Laminate countertops with waterfall edge
- Birch cabinetry with 36" upper cabinets
- **Amana®** stainless steel appliances:
  - 30" smooth-top electric range
  - 30" hood with 2-speed venting and light
  - Large capacity dishwasher with 3 automatic cycles
- Stainless steel double compartment sink
- Single handle chrome faucet with separate pull out sprayer
- 1/3 horsepower **Insinkerator®** disposal
- Pre-plumbing for water line to refrigerator
- Rough-in gas line at range

### PRIVATE LUXURY OF OWNER'S SUITES

- Owner's suite strategically located for privacy
- Spacious walk-in closet off owner's bath
- Walk-in shower with 6 x 6" ceramic tile, solid 34 x 48" shower base, and single handle chrome faucet
- Porcelain-on-steel sink in white with dual handle lever chrome faucet
- Water closet with **Kohler®** water-saver toilet in white finish

### ENERGY EFFICIENCY

- Central heating; 92% efficient gas furnace with programmable **PRO1®** thermostat
- 50 Gallon electric water heater
- Insulation and weather stripping
- White vinyl dual-pane windows with included screens, and Low-E glass

### CENTURY HOME CONNECT

- Device Standard Package
- Google Home Hub
- Thermostat, Nexia WIFI/Z-Wave
- Light Switch, Eaton Z-Wave Wireless, @ Front Porch & Kitchen
- Schlage Front Door Electronic Lock

Century Home Connect devices installed in your home that are connected to the internet, may collect information about you and your use of the device. This automated information is collected, used and analyzed by the third-party providers of the devices and is governed by the terms, conditions, policies and practices of such third-party providers only. Seller recommends that you carefully review your agreements with, and other terms and conditions published by, these third-party providers. Seller does not collect any information from these devices about you or your use of the devices. FOLLOW THE MANUFACTURERS' INSTRUCTIONS ON YOUR SMART DEVICES REGARDING SECURITY AND/OR PRIVACY CONCERNS. Purchaser is responsible for configuring all security features. Seller does not warrant or represent that any Seller installed "smart" devices or network devices are secure or can prevent all privacy intrusions, malware, or cyber-attacks, even when correctly configured. Purchaser for himself, or herself, and his/her successors and assigns hereby agrees to assume the risk of use of the Century Home Connect devices, any devices, products or appliances purchased through Best Buy or its affiliates, and releases Seller and its members, managers, officers, employees, affiliates, agents, successors and assigns from any and all costs, expenses, damages, liabilities and claims arising from or related thereto. Certain products and services are provided by third parties, and not Seller. Seller does not guarantee any equipment or services provided by third parties. Seller disclaims any warranty of any kind, express or implied, relating to Century Home Connect devices, including without limitation, any warranty of use, fitness of use, workmanship, or quality. Seller's disclaimer of warranties does not limit or otherwise affect the warranty of any manufacturer or the installer. If a Century Home Connect product malfunctions, or is otherwise defective, Purchaser agrees to follow the procedures in the applicable manufacturer's warranty documents. No affiliation, or sponsorship is intended or implied with, Nexia, Google, or Best Buy and all trademarks are owned by the respective trademark owners. Google Home Hub and Google Home Mini are trademarks of Google LLC. Devices may not arrive in original or retail packaging and are not intended for individual resale. Effective on homes started on or after August 1, 2020. (C) 2020 Century Communities, Inc.



**CENTURY**  
COMPLETE

CenturyCommunities.com

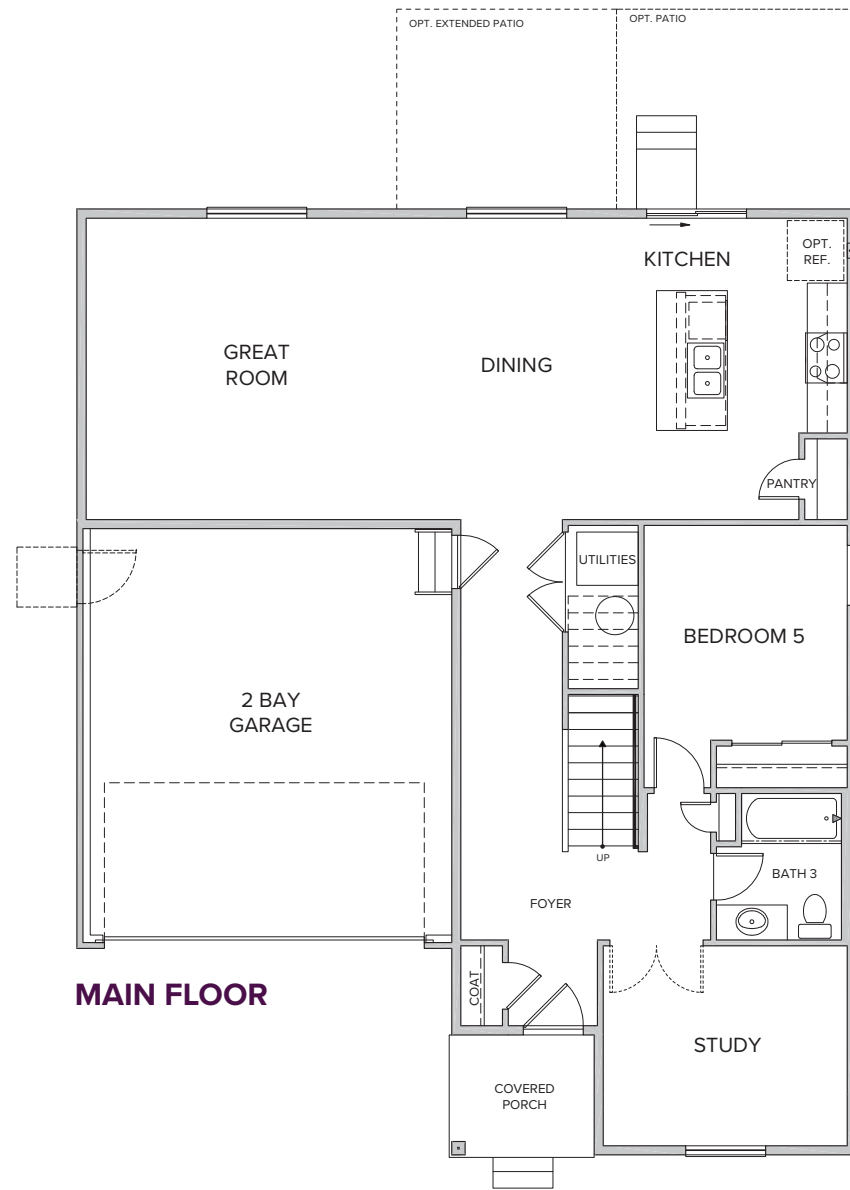
720.307.1003



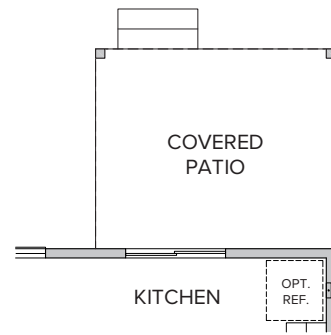
# COYOTE CREEK

# THE VAIL RESIDENCE 39208

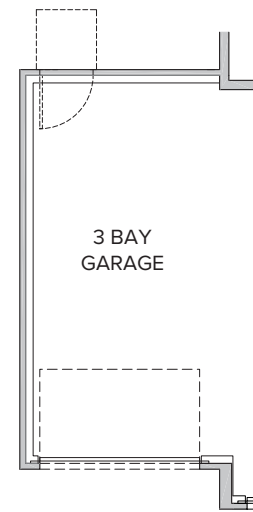




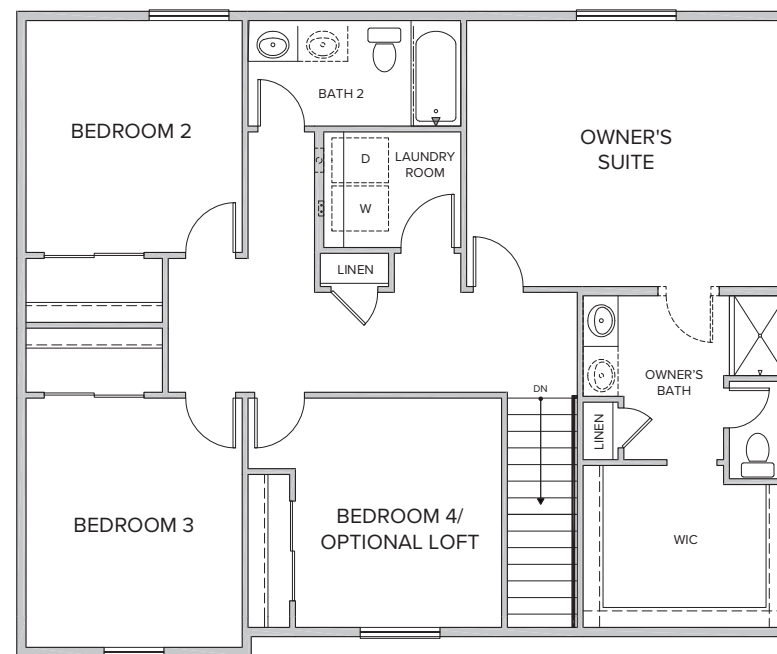
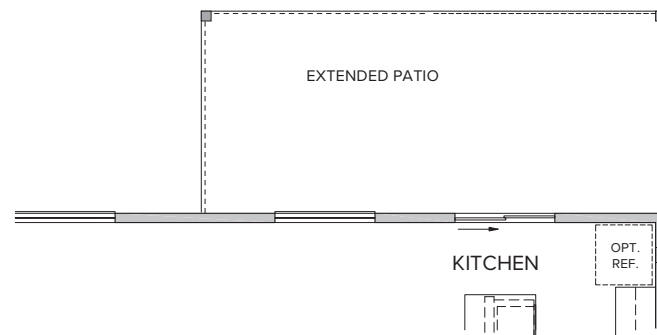
**OPTIONAL  
COVERED PATIO**



**OPTIONAL  
3RD BAY GARAGE**

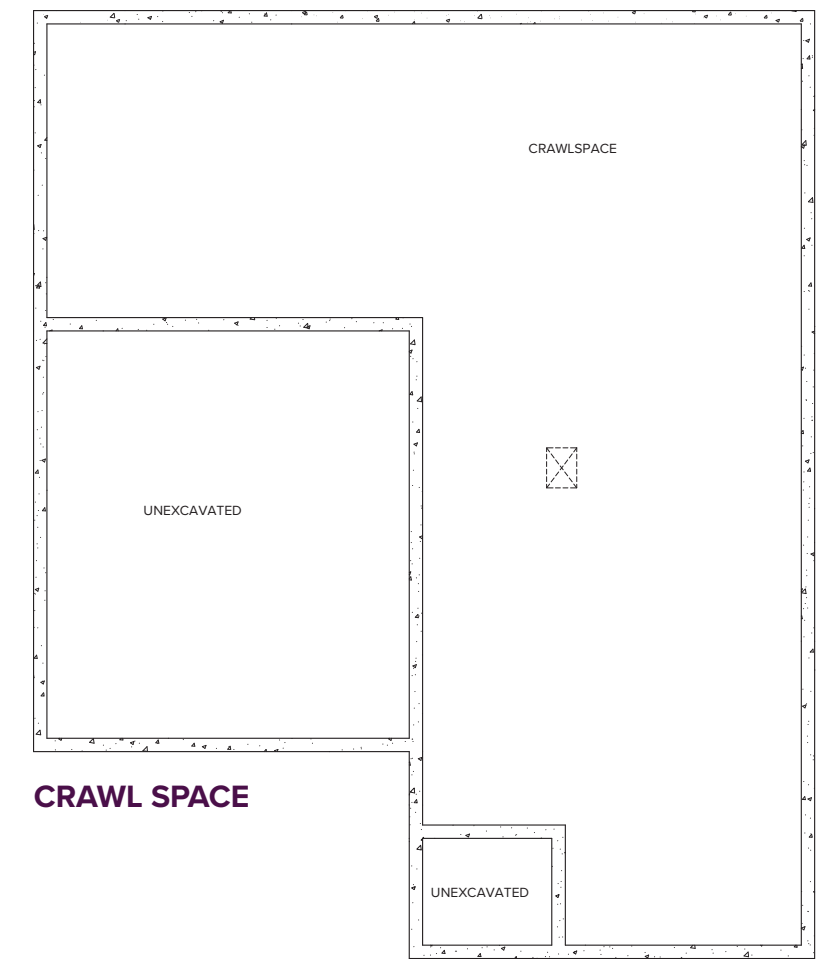
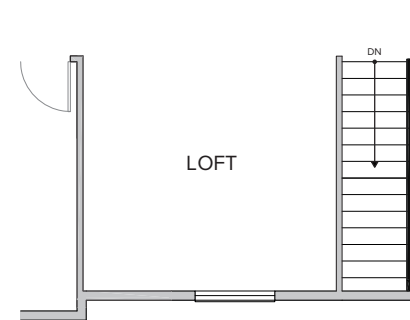


**OPTIONAL  
EXTENDED PATIO**



**SECOND FLOOR**

**OPTIONAL LOFT**



**PRELIMINARY**