

## HACIENDA

### TYLER | PLAN 1557

APPROX. 1,557 SQ. FT. | ONE-STORY HOME | 3 BEDROOMS | 2 BATHROOMS | 2-BAY GARAGE Open-concept with great room/dining combo; Counter seating at kitchen; Walk-in shower & private water closet at primary bath. Sliding glass door to backyard. Optional covered patio.

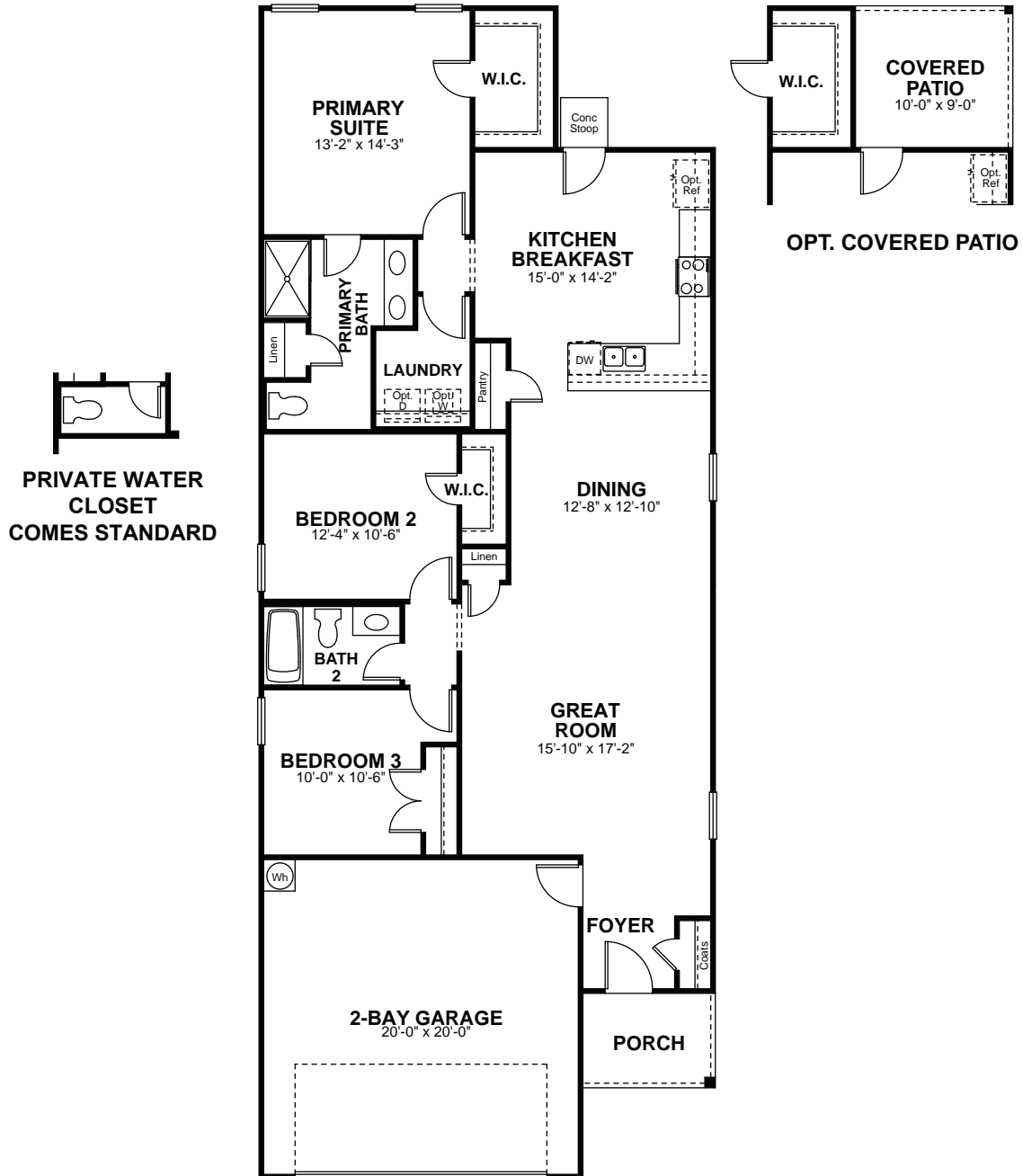


**Please note the floor plans and elevations depicted are merely a preliminary representation of what will be offered in this community; there may be changes as the final collateral has not yet been established. Please see a Sales Associate for details.**



Price, plans and terms are effective on the date of publication and subject to change without notice. Depictions of homes or other features are conceptual. Decorative items and other items shown may be decorator suggestions that are not included in the purchase price and availability may vary. Persons in photos do not reflect racial preference and housing is open to all without regard to race, color, religion, sex, handicap, familial status, or national origin©2022 Century Communities. Century Communities. REV. 03/25/2022

SLIDING GLASS DOOR  
COMES STANDARD ILO  
OF BACK DOOR



FLOOR PLAN



Price, plans and terms are effective on the date of publication and subject to change without notice. Depictions of homes or other features are conceptual. Decorative items and other items shown may be decorator suggestions that are not included in the purchase price and availability may vary. Persons in photos do not reflect racial preference and housing is open to all without regard to race, color, religion, sex, handicap, familial status, or national origin ©2022 Century Communities. Century Communities. REV. 03/25/2022