

# ANTHOLOGY - 40 SERIES

## INCLUDED FEATURES

### REMARKABLE EXTERIORS

- 30 Year shingle roofing
- Fiber-cement siding with latex paint finish
- Brick or stone accents per elevation
- Two bay garage, with drywall finish adjoining all living spaces, and solid fire rated entry door
- 7' Insulated textured steel panel garage door
- Galvanized steel rain gutters with 5' downspout extensions (where applicable)
- Front yard landscaping and irrigation per plan
- 2 rail wing fencing

### IMPRESSIVE INTERIORS

- 2-panel interior doors with chrome hardware
- Walls and ceilings in knock down finish
- **Sherwin-Williams®** paint
  - Walls & ceilings in low sheen finish
  - Baseboards & trim in semi-gloss finish
- Laminate plank flooring in entry, kitchen, and dining nook
- Laundry room on bedroom level
- Secondary bath(s)
  - Venetian marble countertops
  - Porcelain on steel sink in white finish, dual handle chrome lever faucet
  - 60" x 30" tub-shower, ceramic

tile surround and single handle chrome faucet

- Water-saver toilet in white finish
- Vinyl flooring in bathrooms
- Dual port telephone/cable wiring in great room and owner's suite
- Single port telephone wiring in kitchen
- 50 Gallon gas water heater
- Standard basement with 8' walls
- Air conditioning pre-wire
- Rough-in plumbing in basement

### CONTEMPORARY KITCHENS

- Granite countertops with 4" backsplash
- Birch cabinetry with 42" upper cabinets
- **Whirlpool®** stainless steel appliances including:
  - 30" smooth-top electric range and oven with window
  - 30" Microwave/hood with 2-speed venting and light
  - Large capacity dishwasher with 3 automatic cycles
- Double bowl undermount stainless steel sink
- Single handle chrome faucet with separate pull out sprayer
- 1/3 horsepower **Insinkerator®** disposal
- Pre-plumbing for water line to refrigerator
- Gas line to range

### PRIVATE LUXURY OF YOUR OWNER'S SUITE

- Spacious walk-in closet
- Owner's bath
  - Venetian marble countertop
  - Porcelain on steel sink in white finish, dual handle chrome lever faucet, and adult height cabinet
  - Walk-in shower with ceramic tile surround, solid shower base, chrome framed glass enclosure, and single handle chrome faucet
- Water closet with water-saver toilet in white finish
- 12" x 12" Ceramic tile flooring

### ENERGY EFFICIENCY

- 92% Efficient gas furnace with programmable thermostat
- Insulation and weather stripping
- White vinyl dual-pane windows with Low-E glass with included screens per plan

### CENTURY HOME CONNECT

- Device Standard Package
- Google Home Hub
  - Thermostat, Nexia WIFI/Z-Wave
  - Light Switch, Eaton Z-Wave
  - Wireless, @ Front Porch & Kitchen
  - Schlage Front Door Electronic Lock

Century Home Connect devices installed in your home that are connected to the internet, may collect information about you and your use of the device. This automated information is collected, used and analyzed by the third-party providers of the devices and is governed by the terms, conditions, policies and practices of such third-party providers only. Seller recommends that you carefully review your agreements with, and other terms and conditions published by, these third-party providers. Seller does not collect any information from these devices about you or your use of the devices. FOLLOW THE MANUFACTURERS' INSTRUCTIONS ON YOUR SMART DEVICES REGARDING SECURITY AND/OR PRIVACY CONCERNS. Purchaser is responsible for configuring all security features. Seller does not warrant or represent that any Seller installed "smart" devices or network devices are secure or can prevent all privacy intrusions, malware, or cyber-attacks, even when correctly configured. Purchaser for himself, or herself, and his/her successors and assigns hereby agrees to assume the risk of use of the Century Home Connect devices, any devices, products or appliances purchased through Best Buy or its affiliates, and releases Seller and its members, managers, officers, employees, affiliates, agents, successors and assigns from any and all costs, expenses, damages, liabilities and claims arising from or related thereto. Certain products and services are provided by third parties, and not Seller. Seller does not guarantee any equipment or services provided by third parties. Seller disclaims any warranty of any kind, express or implied, relating to Century Home Connect devices, including without limitation, any warranty of use, fitness of use, workmanship, or quality. Seller's disclaimer of warranties does not limit or otherwise affect the warranty of any manufacturer or the installer. If a Century Home Connect product malfunctions, or is otherwise defective, Purchaser agrees to follow the procedures in the applicable manufacturer's warranty documents. No affiliation, or sponsorship is intended or implied with, Nexia, Google, or Best Buy and all trademarks are owned by the respective trademark owners. Google Home Hub and Google Home Mini are trademarks of Google LLC. Devices may not arrive in original or retail packaging and are not intended for individual resale. Effective on homes started on or after August 1, 2020. (C) 2020 Century Communities, Inc.



## ANTHOLOGY

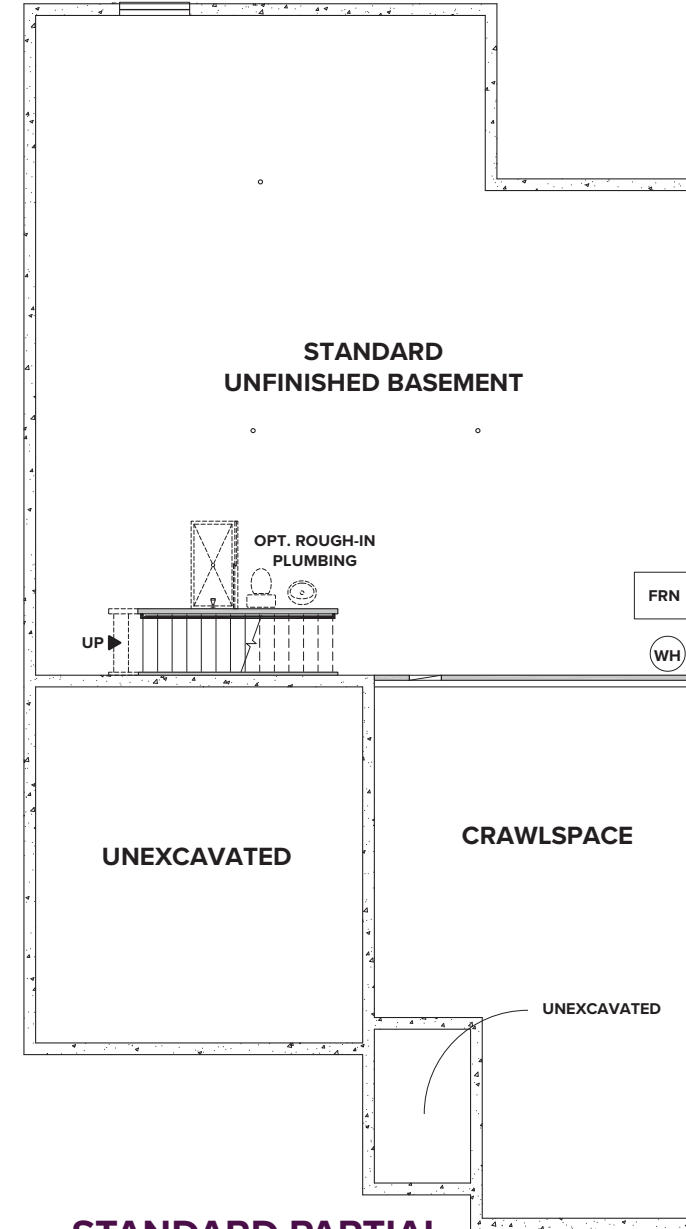
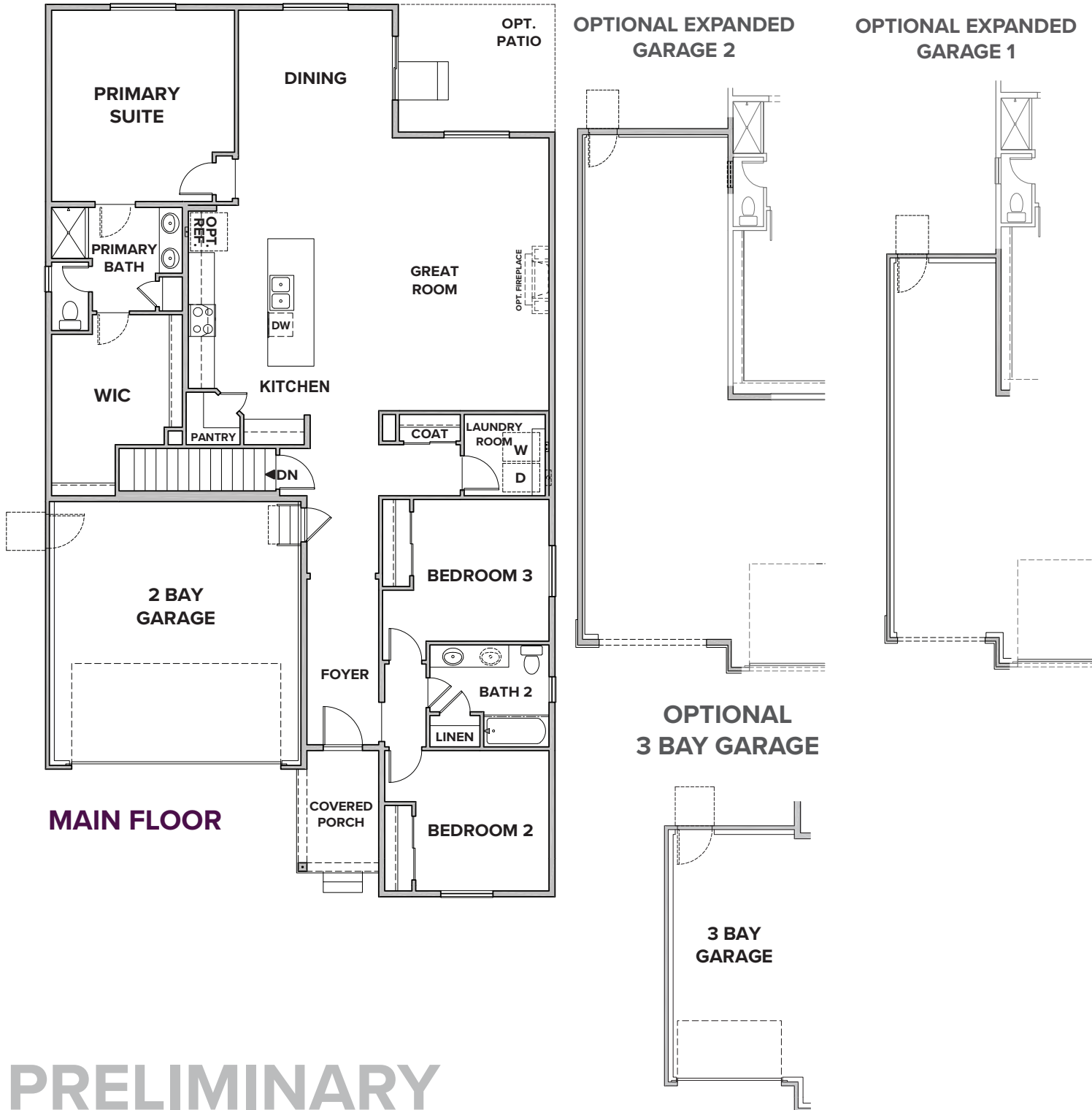
## THE TELLURIDE RESIDENCE 39103



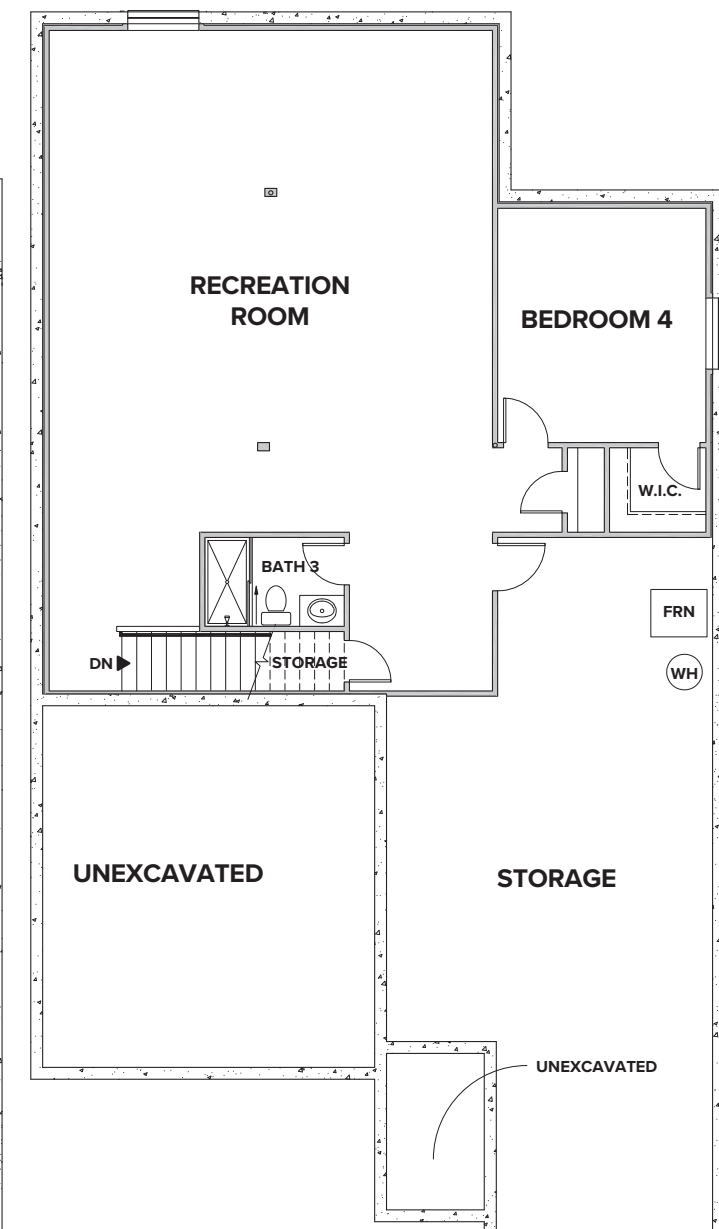
# ANTHOLOGY

# TELLURIDE

APPROX. 1,936 - 3,157 SQ. FT. | RANCH  
3 - 4 BEDROOMS | 2 - 3 BATHROOMS | 2 - 3 BAY GARAGE



**STANDARD PARTIAL UNFINISHED BASEMENT**



**OPTIONAL FINISHED BASEMENT**

**PRELIMINARY**