

NORTHPARK WOODS

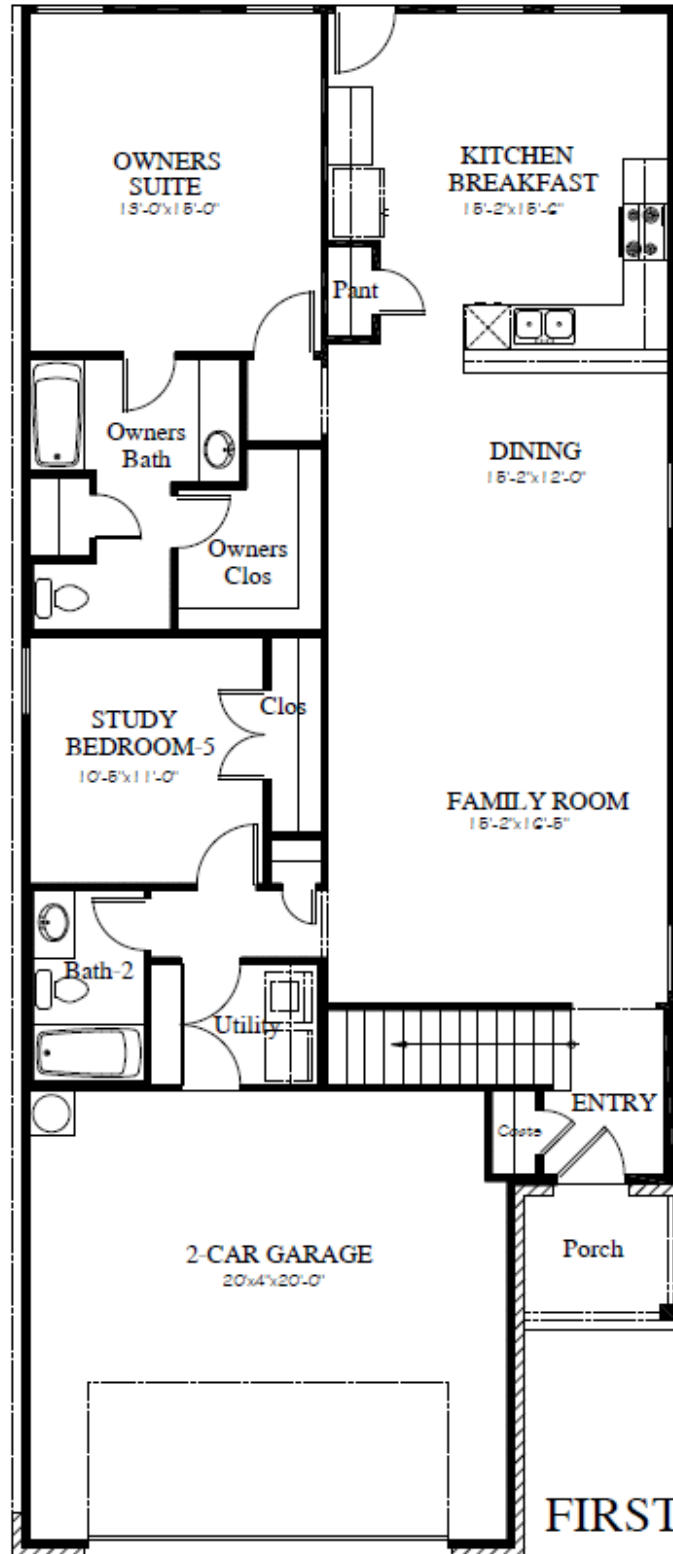


STRATFORD
2,409 SQ FT, 5 BED, 3 -4 BATH

STRATFORD

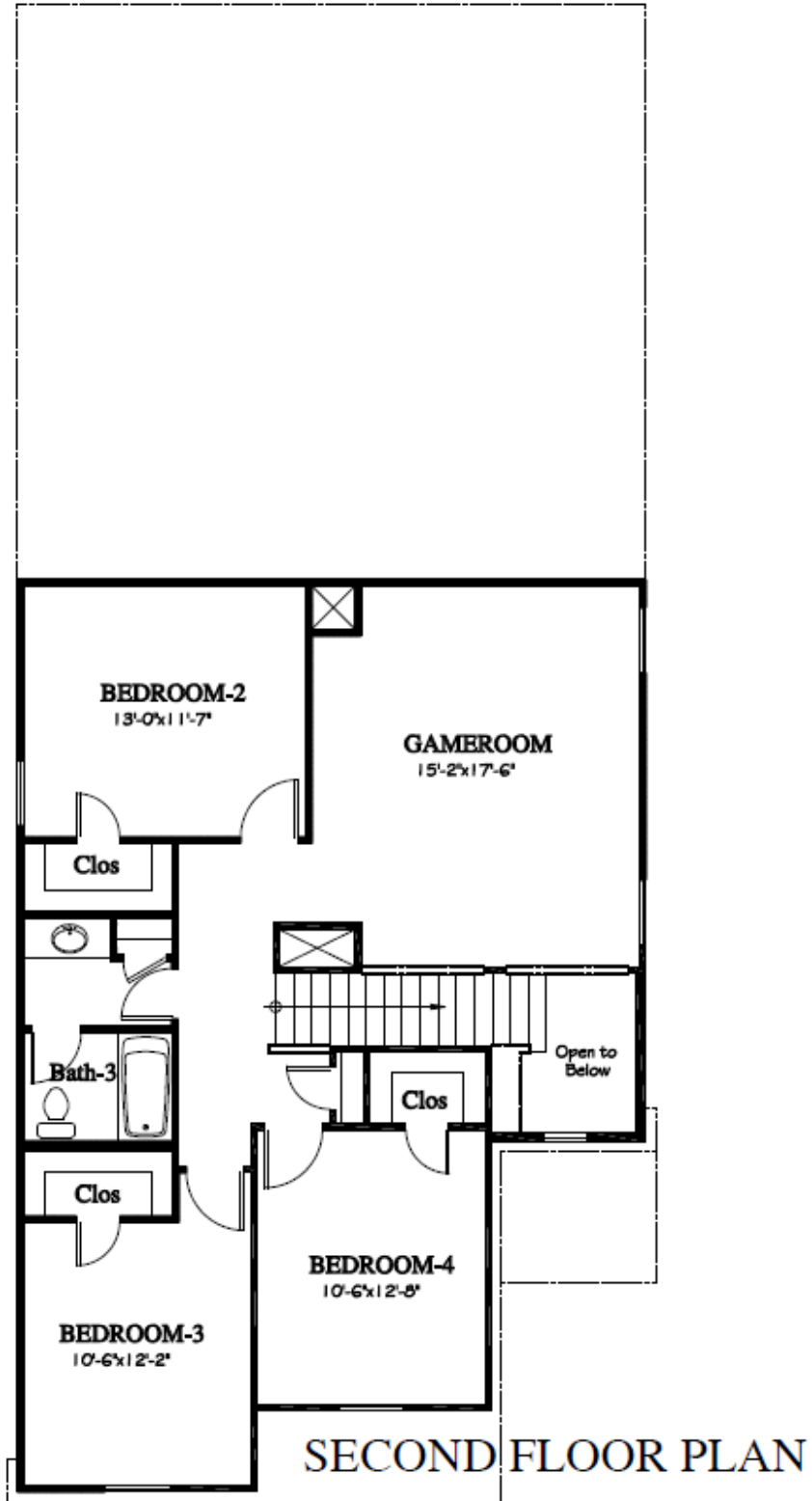
2,409 SQ. FT. | TWO-STORY

5 BEDROOMS | 3 - 4 BATHROOMS | 2-CAR GARAGE



FIRST FLOOR PLAN

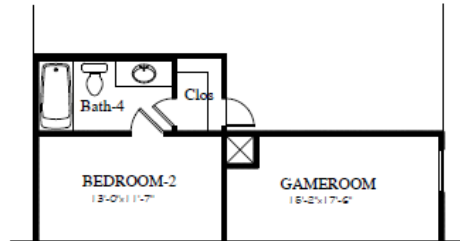




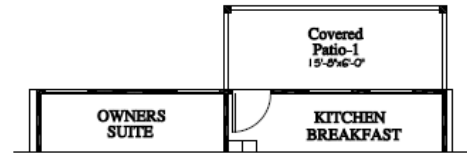
OPTIONS



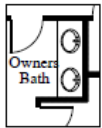
OPTIONAL STUDY



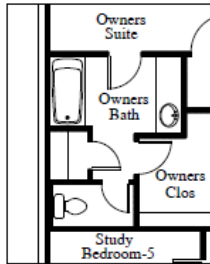
OPTIONAL BATH-4



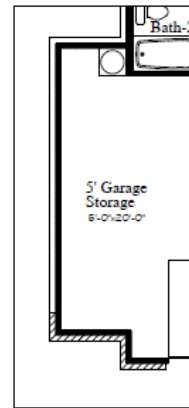
OPTIONAL COVERED PATIO



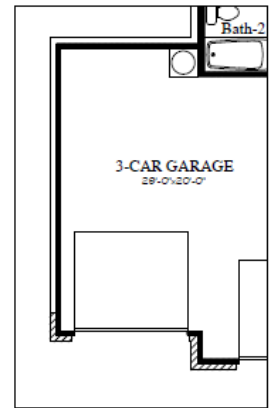
OPTIONAL
DOUBLE SINK
OWNERS BATH



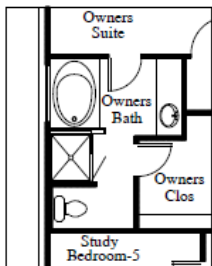
OPTIONAL
WATER CLOSET
OWNERS BATH



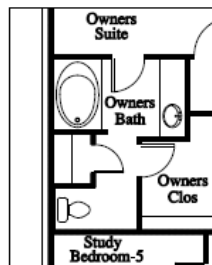
OPTIONAL
5' GARAGE
EXTENSION



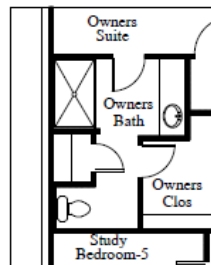
OPTIONAL
3-CAR GARAGE



OPTIONAL SEPARATE
GARDEN TUB and SHWR
OWNERS BATH



OPTIONAL COMBINATION
GARDEN TUB and SHWR
OWNERS BATH



OPTIONAL
WALK-IN SHWR
OWNERS BATH

