

# WOOD HOLLOW

ECHO | 39101

APPROX. 2,819 SQ. FT. | 1,405 SQ. FT. | RAMBLER  
3 BEDROOMS | 2 BATHROOMS | 2 to 3 BAY GARAGE



ELEVATION S



ELEVATION A



ELEVATION B



ELEVATION C

[CenturyCommunities.com/Utah](https://CenturyCommunities.com/Utah) | 801.653.3536

A HOME FOR  
EVERY DREAM<sup>SM</sup>

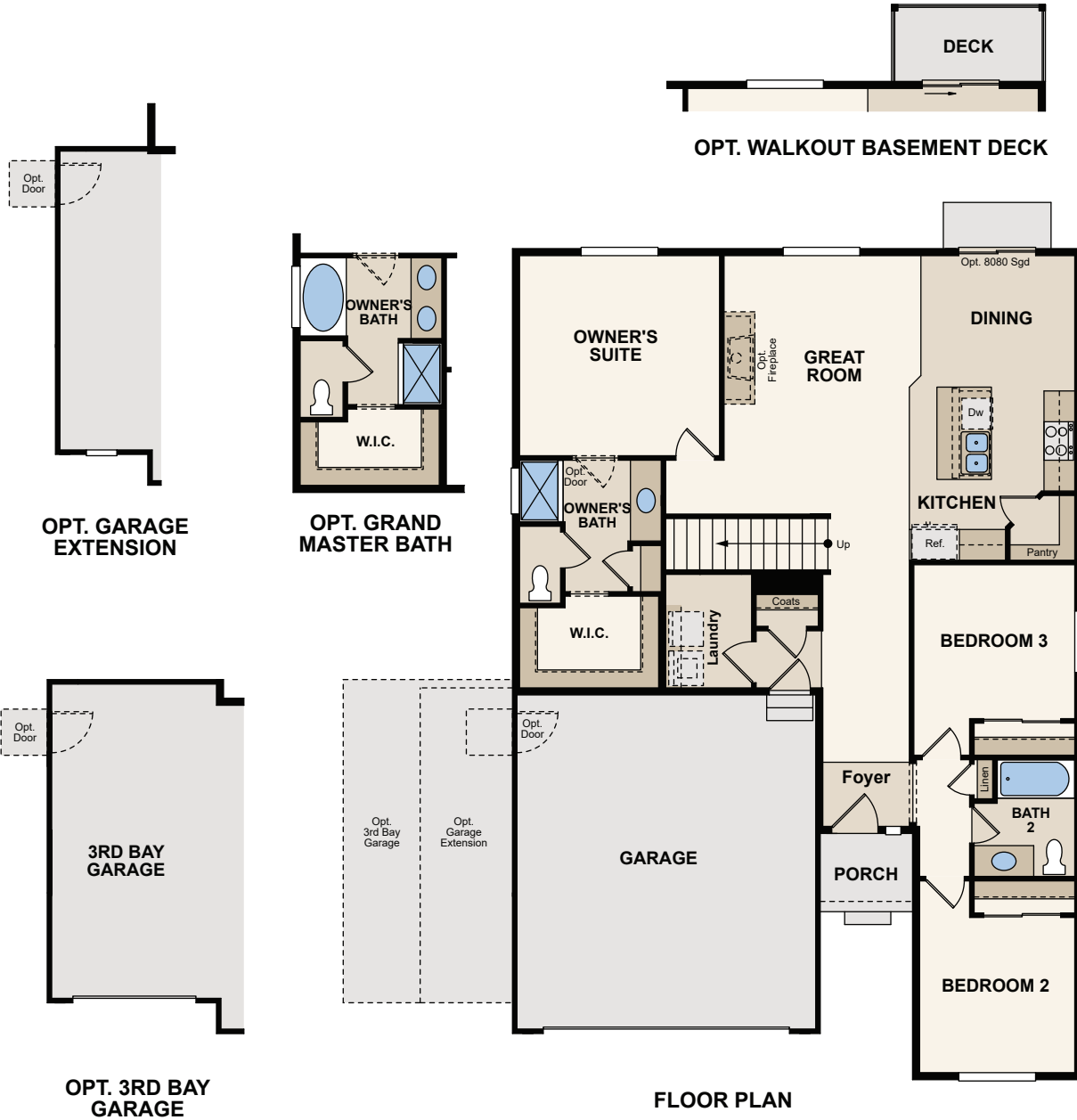


Price, plans and terms are effective on the date of publication and subject to change without notice. Depictions of homes or other features are conceptual. Decorative items and other items shown may be decorator suggestions that are not included in the purchase price and availability may vary. Persons in photos do not reflect racial preference and housing is open to all without regard to race, color, religion, sex, handicap, familial status, or national origin. ©2019 Century Communities.

# WOOD HOLLOW

ECHO | 39101

APPROX. 2,819 SQ. FT. | 1,405 SQ. FT. | RAMBLER  
3 BEDROOMS | 2 BATHROOMS | 2 to 3 BAY GARAGE



A HOME FOR  
EVERY DREAM<sup>SM</sup>



Price, plans and terms are effective on the date of publication and subject to change without notice. Depictions of homes or other features are conceptual. Decorative items and other items shown may be decorator suggestions that are not included in the purchase price and availability may vary. Persons in photos do not reflect racial preference and housing is open to all without regard to race, color, religion, sex, handicap, familial status, or national origin. ©2019 Century Communities.